



Maintain, Update and Enhance Traffic Activity Estimation and Forecasting Methods: Registration Data Update and Plan

TECHNICAL MEMORANDUM

Prepared for the Texas Department of Transportation

October 2019

Environment and Air Quality Division



TECHNICAL MEMORANDUM – DRAFT FOR REVIEW

Inter-Agency Contract (Contract No: IAC 00000015198)

Sub-Task 4.3 **Activity Forecasting:
Maintain, Update and Enhance Traffic Activity
Estimation and Forecasting Methods: Registration
Data Update and Plan**

DATE: October 29, 2019

TO: William Knowles, P.E.
Texas Department of Transportation (TxDOT)

COPY TO: Janie Temple, TxDOT
Laura Norton, TxDOT

FROM: Dennis Perkinson, Ph.D.
Andrew Birt, Ph.D.
Texas A&M Transportation Institute

FOR MORE INFORMATION:

Dennis Perkinson, Ph.D.
(979) 317-2246
d-perkinson@tti.tamu.edu

TABLE OF CONTENTS

Table of Contents iii

Table of Figures iv

Table of Tables iv

Maintain, Update and Enhance Traffic Activity Estimation and Forecasting Methods:
Registration Data Update and Plan 1

 Introduction 1

Overview of VMT Mix 2

Background 7

Current Status 8

 Short Haul versus Long Haul Heavy Trucks 8

 Total Registered Vehicles 9

Next Steps: Options and Decisions Necessary for Resolution 18

Appendix 1 20

Appendix 2 32

Appendix 3 40

TABLE OF FIGURES

Figure 1. Overview of the VMT Mix Process..... 6
Figure 2. Total Vehicles 2001-2018 13
Figure 3. Passenger Vehicles 2001-2018..... 14
Figure 4. Total Trucks vs. Trucks <=8500..... 15
Figure 5. Other vs. Trucks 2001-2018..... 16

TABLE OF TABLES

Table 1. LDV and Percent Trucks 9
Table 2. Comparison of Registration Data Sources 2001-2013..... 12

MAINTAIN, UPDATE AND ENHANCE TRAFFIC ACTIVITY ESTIMATION AND FORECASTING METHODS: REGISTRATION DATA UPDATE AND PLAN

INTRODUCTION

The focus of this document is on registration data. The mix of vehicle miles traveled by vehicle type (VMT mix) is the primary use of that data. However, both VMT mix and direct registration data are used for other parts of the emissions estimation process.

VMT mix is the fraction of the on-road fleet VMT attributable to each vehicle type / fuel type combination. It is used to allocate total VMT by vehicle type to each link of the roadway network. Thus, VMT mix is a critical element in the estimation of on-road mobile source emissions and a major input to the United States Environmental Protection Agency's (EPA's) Motor Vehicle Emission Simulator (MOVES), which categorizes the fleet into nine different fuel types and 13 different source use types (SUTs).

VMT mix estimation relies upon the Texas Department of Transportation (TxDOT) collected vehicle classification counts and Texas Department of Motor Vehicles (TxDMV) registration data extracts. TxDOT classification counts separate vehicles into the standard Federal Highway Administration (FHWA) vehicle categories (based on vehicle length/number of axles). TxDMV registration data defines vehicle categories based on gross vehicle weight category (GVWR). These data are used to separate vehicle categories by fuel type and model year, and are supplemented using analysis year national defaults as appropriate. VMT mix is used directly in the emissions estimation process. VMT mix along with the associated registration data is also used in a number of other critical procedures, primarily associated with vehicle population, off-network activity (e.g., source hours parked) and inputs to county data bases (CDB) which are used for large scale emissions estimates and checking smaller scale inventories. By virtue of the pervasive use of VMT mix throughout the emissions estimation process, VMT mix is the primary use of the registration data.

The registration data extracts provided by TxDMV are summaries of the comprehensive database they maintain. Specifically, they are summaries by pre-defined GVWR and model year. TTI has historically received these data sets for mid-year (i.e., July 1st) and

year-end (December 31st), though as discussed below, the year-end set may now be optional. (The format, as well as the extraction code was developed specifically for our use.) Multiple files have been historically provided, one for all vehicles, one for heavy duty gas vehicles, and another for heavy duty diesel vehicles.

Regarding the specifics of how these datasets are used, the mid-year summaries are reformatted and used as inputs to the EPA emissions rate calculation software (MOVES) to calculate emission rates by county or county group. The year-end summaries are used to calculate the mix of vehicle types by county or county group (i.e., VMT mix) to calculate various factors relating to vehicle type and fuel, which are combined with TxDOT vehicle classification counts to get an accurate picture of the fleet by county and county group. Both applications are critical for the accurate estimation of emissions specific to Texas counties and regions, which is a critical element in all our emissions inventory work. Specifically, the Texas A&M Transportation Institute (TTI) uses these data in estimating on-road mobile source emissions for setting emissions budgets (i.e., not to exceed targets) and demonstrating conformity with those targets.

OVERVIEW OF VMT MIX

As noted above, the emissions estimation process uses registration data to estimate VMT mix, as well as directly along with VMT mix for other parts of the process (e.g., vehicle population, off-network activity, etc.). By virtue of the pervasive use of VMT mix throughout the emissions estimation process, VMT mix is the primary use of the registration data.

VMT mix refers to the mix of vehicle types on the road and the relative contribution to total VMT of each category of vehicle. The mix of vehicles varies by county and road type. Since different vehicle types have different emission rates, this is a critical part of the emissions estimation process. As noted above, MOVES SUT is the logical equivalent of VMT mix but is distinguished separately in application for clarity. This is the application of the SUT categories, hence VMT mix. There are two elements in the estimation of VMT mix; the vehicle classification counts themselves (i.e., the data) and the conversion of those counts into EPA MOVES categories (i.e., the conversion procedure).

Data Sources: VMT mix is estimated from vehicle classification counts, aggregated in various ways. Classification counts separate vehicles into the standard FHWA vehicle categories (based on vehicle length/number of axles). We typically aggregate multiple

years into roadway functional classification groups (e.g., freeway, arterial and collector). We also frequently combine adjacent counties into planning area or regional estimates.

Conversion Procedure: With regard to reconciling differences between activity and emissions data, a long-standing challenge in producing on-road mobile source emissions inventories is the difference between how vehicle activity data characterize vehicles and how emissions or fuel economy regulations characterize vehicles. An example of this is how vehicles are characterized by the Highway Performance Monitoring System (HPMS) data (based on vehicle length/number of axles), as opposed to the MOVES weight and activity-based classifications.

On the activity side, vehicles are grouped into SUTs, assumed to have unique activity patterns. Because HPMS data are a fundamental source of activity, the MOVES SUTs are defined as subsets of FHWA vehicle classifications. The majority of MOVES-related activity data are based on these classifications. Specifically regarding VMT mix, EPA and MOVES use a different vehicle classification scheme than the FHWA categories used for classification counts. The EPA / MOVES vehicle categories are defined as a function of SUT. The FHWA axle/vehicle length-based classification categories must be converted into the SUT based categories. This is accomplished through a series of steps using local registration data, regional registration data, and MOVES default values (for fuel type). Because of their complexity and importance, these steps and the underlying logic are described in detail in a separate document.

VMT mix is typically calculated and applied by time period. Vehicle classification data are currently only collected for weekdays (Monday through Thursday). The procedure used to estimate Friday, Saturday, and Sunday VMT mix relies on supplemental vehicle classification data. The ratio of weekday VMT mix to Friday, Saturday, and Sunday VMT mix is used to estimate day type specific VMT mix. Because of the complexity of the underlying behavior, as well as the parameter itself (SUT categories, time period, day of week, etc.), vehicle classification data are not forecast. For future year VMT mix estimates, MOVES default values consistent with the analysis year are used. No other adjustments are made for analysis year. Similarly, there are no seasonal changes assumed for VMT mix.

These measures and procedures provide a functional, region-specific, disaggregate link-level application of MOVES as currently configured. Specifically, TxDOT district-level, time period, Weekday (average Monday through Thursday), Friday, Saturday, and Sunday vehicle type VMT mixes (for gasoline-powered and diesel-powered vehicles) are

estimated by the four MOVES road-type categories using the methodology characterizing VMT by vehicle type for a region (or district) as follows.

1. MOVES – Data files of MOVES default values extracted from MOVES databases or pro forma runs.
2. TxDOT Classification Counts – Data files of standard TxDOT classification data assembled and used for determining the in-use road fleet mix.
3. TxDMV Registration Data – Data files of standard TxDMV vehicle registration summary data assembled and used for determining the in-use road fleet mix.
4. TxDOT Automatic Traffic Recorder (ATR) Data – Data files of TxDOT ATR data assembled and used to allocate VMT by season and day of week.
5. Single Unit Local vs. Total SUT_HDVyy – Procedure based on registration data to generate factors to separate single unit local versus combination trucks by region. (SUT_HDVyy has multiple outputs based on vehicle category and fuel.)
6. Combination Local vs. Total SUT_HDXyy – Procedure based on registration data to generate locally registered heavy truck categories by fuel used to generate short-haul and long-haul combination truck proportions by region.
7. Day of Week (DOW) Factors by Urban Area/TxDOT District – Seasonal day-of-week factors from TxDOT ATR data used to allocate VMT by season and day-of-week by urban area/TxDOT district.
8. Single Unit Short-Haul vs. Long-Haul SUT_SSHZ – Procedure to separate single unit short-haul versus single unit long-haul using factors generated at SUT_HDVyy and classification count data. Short-haul and long-haul are functionally defined as local and pass through.
9. Combination Short-Haul vs. Long-Haul SUT_CSHZ – Procedure to separate combination short-haul versus combination long-haul using factors generated at SUT_HDXyy and classification count data. Short-haul and long-haul are functionally defined as local and pass through.
10. PV and LDT Fuel MF_Fueyy – Procedure to generate passenger vehicle and light truck fuel allocation by year based on MOVES national default values and local registration data.

11. Single Unit and Combination Truck Fuel SUT_HDVyy – Procedure to generate single unit and combination truck fuel allocation factors from registration data. (SUT_HDVyy has multiple outputs based on vehicle category and fuel.)
12. SUT_yyddtt – Procedure to generate SUT proportions by year, day type, and time period, based on the previous steps.
13. MOVES SUTs – Output file of MOVES SUTs by region, analysis year, day type, and time period.

This procedure produces TxDOT district-level weekday VMT mix by MOVES road-type category using multi-year vehicle classification counts and TxDOT vehicle registration data. Using a similar procedure, aggregate (i.e., all road-type categories) TxDOT district-level weekday vehicle type VMT mixes (for vehicle population estimation) are also produced. VMT mix is developed in five-year increments beginning with 2005. Figure 1 provides an overview of this process.

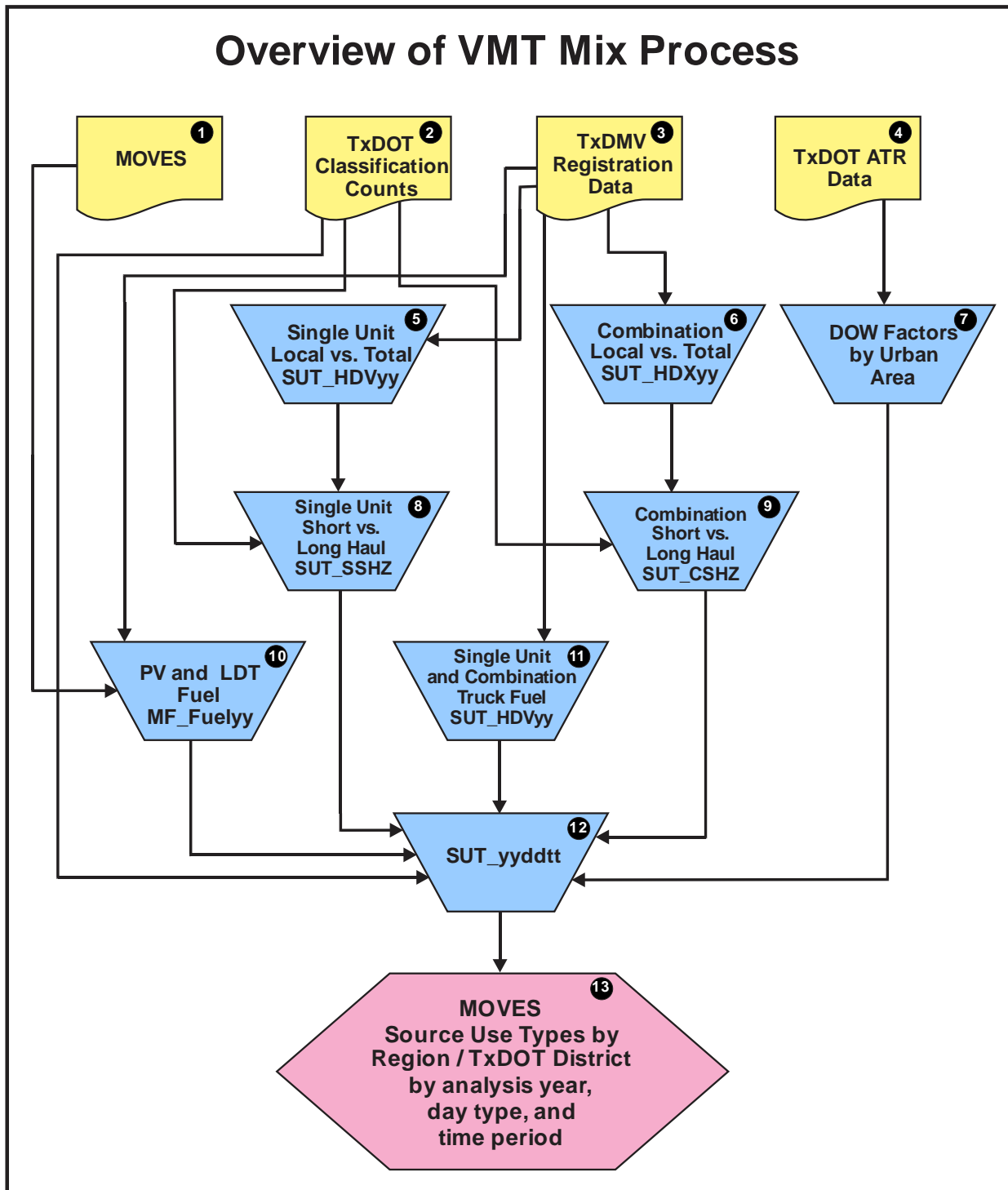


Figure 1. Overview of the VMT Mix Process.

BACKGROUND

From the early 1990's until mid-2014, TTI regularly received TxDMV registration data twice a year, mid-year (ca 1 July) and year-end (ca 31 December), formatted into distinct clearly defined vehicle categories (by GVWR and fuel). Beginning in 2015 it became clear that there were issues obtaining these datasets. Inquiries were made by TTI and by TxDOT throughout 2015. No estimates of when the data might be available were provided by TxDMV and TxDOT was informed that TxDMV had migrated away from their mainframe platform and the requisite extraction files had not yet been created. There had also been some retirements of staff formerly involved with providing the datasets.

In December of 2017, a comprehensive history and status of the registration data acquisition effort was compiled. Subsequently, a general purpose presentation was prepared on the 13th of January 2018. It was presented at the Technical Working Group for Mobile Source Emission (TWG) meeting of May 3rd. (See Appendix 2 - May TWG agenda and presentation.) At that meeting, North Central Texas Council of Governments (NCTCOG) shared their own efforts at obtaining registration data and agreed to inform the group of their progress. At this point, at the request of TxDOT, the matter was turned over to TxDOT. A subsequent inquiry confirmed this.

In November, word of NCTCOG's successful acquisition of registration data for 2018 was received, and those data were subsequently shared with TTI. A unilateral inquiry regarding the sharing of these data was made by NCTCOG and approval to share the data was obtained. Simultaneously, Houston-Galveston Area Council (H-GAC) announced that they had requested and received 2018 registration data as well. In addition, a data set obtained by TxDOT was provided to TTI for review. TTI's initial assessment of the three registration data sets was completed on the 20th of November.

CURRENT STATUS

TTI obtained the description used by NCTCOG to request the data. The rationale is that these 'original requests', performed through the TxDMV public data request portal, include a numerical reference that may be useful for establishing the technical criterion used by the TxDMV analysts at the time of the request. If so, this represents a useful starting point from which to build future requests (i.e., with modified, and more precise criteria).

TTI has also established multiple direct contacts with TxDMV. These contacts are critical for any future acquisition. They were also instrumental in confirming that historical extractions are not possible. Our current information is that the entire database is dynamic and is not kept in a form that is retrievable to extract historical data (although it remains a possibility that, should an appropriate TxDMV analyst be made available for consultation, a more accurate answer can be obtained). In the process, TTI also confirmed that the NCTCOG data is August, as NCTCOG recalled.

Based on our assessment of the situation at that time (December 2018):

- TTI has access to 2018 registration data for the entire state from August.
- TTI has the information and contacts necessary to obtain statewide registration data sets in the future directly from TxDMV.
- TTI has confirmation from TxDMV that targeted extracts / historical years are not available.

At TxDOT's request, TTI assessed the three registration datasets in November of 2018. In February / March of 2019, as the next level of confirmation and verification, TTI fully incorporated the NCTCOG 2018 registration data into the source use type estimation process and generated updated source use type estimates for the entire state, while at the same time pursuing the incorporation of the data into the MOVES rates procedure. The formal Source Use Type application and MOVES rates utilities function as both verification and required utility upgrades. (Updates of both procedures are required, even if there are issues with this particular data set.) These communications are provided in their entirety.

The format and structure were determined to be correct. However, there were anomalies (subsequently recognized as issues) in two areas (see Table 1). Descriptions of these anomalies are discussed in the following sections.

Short Haul versus Long Haul Heavy Trucks

The proportion of short haul versus long haul heavy trucks uses registration data directly to estimate short haul activity. Short haul went from approximately 25/75 (short haul / long haul) statewide in the 2014 data to 50/50 in the 2018 data. This was initially

thought to be due to economic growth in the form of existing local trucking operations expanding, as well as more Texas-based trucking. The proportion of heavy trucks (short and long haul together) relative to the entire Texas vehicle count was virtually unchanged (31.5% in 2014 vs 31.3% in 2018), further supporting this interpretation.

Total Registered Vehicles

Total registered vehicles appeared to have gone from almost 19 million in 2015 to nearly 28 million in the 2018 data. (The 2015 total is a reference. The vehicle categories and model year format were not consistent with our needs. Consequently, the 2015 data could not be used for emissions estimation.)

Table 1. LDV and Percent Trucks

Year	LDV	Trucks (LDV+HDV)	Total
2014J	12,497,644	5,756,442 (31.5%)	18,254,086
2015J	13,030,938	5,923,508	18,954,446
2018A	19,880,929	8,076,559 (31.3%)	27,957,488

Initially, the increase in total vehicles was thought to be due to economic growth, possibly combined with subtle demographic changes that affect travel behavior and vehicle ownership. Subsequent analysis indicated that the extraction / selection protocol might be different. Additional investigation revealed that the data included trailers, and probably other unspecified vehicles. The additional investigation involved locating revenue reporting data that contained total registered vehicles by year and comparing it with TTI's earlier data obtained prior to 2018. This comparison revealed a consistent difference of approximately the magnitude observed for between the 2014 and 2018 data. The obvious conclusion was that they were two different datasets.

Further specific inquiries revealed that absent explicit instructions to the contrary, the TxDMV interprets "vehicle" to mean any vehicle registered to operate on the public roads, powered or not (i.e., towed). The 2018 requests were for all registered "vehicles" causing trailers (and probably an array of other vehicles) to be included. Once confirmed, this will likely account for a substantial portion (and possibly all) of the additional vehicles in the data. It also highlights the importance of being absolutely clear about terminology and definitions.

All the changes between the 2014 registration data and the 2018 data need to be examined, attributed to identifiable causes, so we can make future requests to TxDMV precise enough to obtain the necessary data and ensure the credibility of the data, the process, and the results. The bottom line is that the 2018 data obtained by NCTCOG has

allowed us to make significant progress toward resolving the registration data issue, but is not itself usable in its present form.

These issues were presented to the TWG at the March 7th meeting, resulting in the formation of a work group under the auspices of the TWG, supported by TTI, and led by NCTCOG. Members include, but are not limited to TTI, TxDOT, Texas Commission on Environmental Quality (TCEQ), H-GAC, FHWA, and EPA. (The presentation and meeting summary are provided in Appendix 7 – TWG Presentation of 7 March 2019.)

Following the TWG meeting, TTI continued its investigation of the 2018 registration data in the context of the similar public data available on the TxDMV website.

(https://www.txdmv.gov/txdmv-forms/cat_view/13-publications/25-reports-data/65-vehicle-titles-registration/). This site provides various summaries of registration data.

While these summaries are not directly comparable to the data required by TTI for conformity purposes, they are sufficiently similar to provide reasonableness checks and more importantly, insight into likely difference between what was previously supplied to TTI and what was received through NCTCOG for 2018. (These data were the source of the comparison between TTI's previous acquisitions from TxDMV and the 2018 noted above.) Of particular interest for this analysis are the following documents acquired from the TxDMV website (i.e., through the url above):

- Texas Passenger Vehicles < 6,000 lbs., Motorcycles and Trucks (1 ton or less) Registrations (Passenger_Pickup_Truck_Motorcycle_Registrations.pdf – Appendix 8)
- Currently Registered Vehicles by Registration Class (Statewide_Totals_FY_01-18.pdf – Appendix 8)

The former TxDMV document (Passenger_Pickup_Truck_Motorcycle_Registrations.pdf) is a high-level summary of registered vehicles by fiscal year from 2001 to 2016. As such, it provides historical registrations (in summary form) which cannot be obtained ex post facto from the current registration data database. These can be used to compare the TTI obtained data with official TxDMV data, albeit for fiscal years rather than calendar years (i.e., 1 September versus 31 December). The vehicle categories are not the same as those provided to TTI, but they are approximate, and the totals are comparable in principle. In interpreting these data note that trucks are defined by their common reference ("Pickups") rather than their GVWR. Note also that the "Total Vehicle" includes more than the vehicle categories listed. The difference includes heavy duty trucks (> 8500 GVWR). Finally, the "Percent Trucks" column includes only the trucks from the "Total Trucks" column. Heavy trucks are not included in that calculation.

The latter TxDMV document (Statewide_Totals_FY_01-18.pdf) contains various financial information (hence has been referred to as "financial" data for short) as well as a county and state summary of total registered vehicles. It is by calendar year which makes comparison with the data provided to TTI more straight forward. The financial aspect is

valuable because it includes summaries by license plate designation, thereby indicating the range of vehicles included in the concept of “total vehicle registrations.” Note, however, that total vehicles are virtually identical to the total vehicles shown in the other TxDMV data (e.g., 24,053,612 FY16 versus 24,038,055 August 2016). Though the number of registrations by license plate designation is shown, no single category or functional group of categories accounts for the difference in total vehicles in the 2018 data.

The first reference dataset (Texas Passenger Vehicles < 6,000 lbs., Motorcycles, and Trucks) was compared with the data provided to TTI by the TxDMV between 2001 and 2014 (totals included in Appendix 8), and then with the data obtained through NCTCOG for 2018. The data obtained by TTI directly from the TxDMV are separated into distinct vehicle categories clearly defined by GVWR, along with sub-total groupings of relevant categories. Model years are also provided. Total registered vehicles are the sum of “Passenger,” “Motorcycles” and “Total All Trucks” (which is itself the sum of “Total Trucks <= 8500” and “Total Trucks > 8500”). More importantly, these categories are identified from the VIN information contained in the registration database, which allows the exclusion of vehicles outside the defined categories, including the exclusion of trailers and non-standard vehicles like golf carts. These data sets are provided in Appendix 8, in their entirety for the TxDMV sets from their website, and as state summaries for the TTI data. The three datasets are summarized and compared in Table 2. The 2018 data is presented as a separate single line. The 2018 dataset is available electronically, as are the full TTI datasets from 2001 through 2013.

Looking at Table 2, for purposes of validation and insight into the 2018 registration data, these data allow us to focus on total vehicles and vehicles in the sub-categories. In the table, the “Passenger Vehicles” columns are equivalent, with the exception noted below for the 2018 data (relating to the definition of “vehicle”). “Total Trucks” and “Trucks >8500” are approximately equivalent. “Total Trucks” are defined by curb weight which is equivalent to up to 10,000 GVWR. In other words, the “Total Trucks” category and “Trucks > 8500” category overlap slightly. The values in these categories are similar since the category between 8500 and 10,000 is relatively small.

In the TxDMV data, “Other” is everything that’s not included in the categories shown (especially heavy duty trucks – trucks >8500 GVWR). However, the change in Passenger Vehicles in the 2018 data is also extreme compared to either the TxDMV or the TTI dataset.

Table 2. Comparison of Registration Data Sources 2001-2013

Year FY/CY	TxDMV (FY)				TTI (CY)			
	Total Vehicles	Passenger Vehicles	Total Trucks	Other	Total Vehicles	Passenger Vehicles	Trucks <=8500	Trucks >8500
2001	17,906,116	9,984,030	4,813,943	2,906,309	14,310,360	9,407,402	4,459,901	243,776
2002	18,707,486	10,187,592	5,044,364	3,246,904	14,286,996	9,315,117	4,513,388	245,967
2003	18,621,915	10,174,751	5,139,701	3,056,874	14,809,367	9,582,362	4,714,562	266,873
2004	18,949,499	10,296,782	5,269,577	3,104,764	15,106,616	9,726,895	4,819,186	288,682
2005	19,144,792	10,517,928	5,371,040	2,942,205	15,404,015	9,922,108	4,852,218	319,315
2006	20,059,065	10,726,666	5,434,231	3,553,322	16,145,063	10,432,895	5,023,329	353,035
2007	20,864,318	11,069,564	5,592,441	3,829,451	16,694,671	10,815,446	5,144,571	366,539
2008	21,185,173	11,239,751	5,540,227	3,981,844	17,037,396	11,046,464	5,150,496	412,758
2009	21,446,721	11,453,354	5,588,568	3,981,355	16,988,561	11,039,416	5,119,563	412,325
2010	21,570,282	11,620,482	5,609,210	3,920,868	17,216,706	11,242,289	5,142,069	418,824
2011	21,939,786	11,832,416	5,612,457	4,064,491	17,378,508	11,382,617	5,122,254	451,025
2012	22,618,153	12,378,139	5,777,174	4,023,811	17,872,513	11,772,301	5,164,479	506,133
2013	23,227,032	12,818,065	5,854,158	4,115,849	18,348,326	12,200,407	5,175,556	548,776
2014	23,886,263	13,267,039	5,918,921	4,262,354	NA	NA	NA	NA
2015	23,751,503	13,288,425	5,780,988	4,306,635	NA	NA	NA	NA
2016	24,053,612	13,979,501	5,990,813	3,702,505	NA	NA	NA	NA
2017	NA	NA	NA	NA	NA	NA	NA	NA
2018	28,941.13	19,880,933	6,511,581	*1,564,944	28,941.13	19,880,933	6,511,581	*1,564,944

*Note: Year 2018 is the NCTCOG provided data. For reference and discussion, it is shown in the most equivalent category. "Other" and "Trucks >8500" are the least equivalent. See associated text.

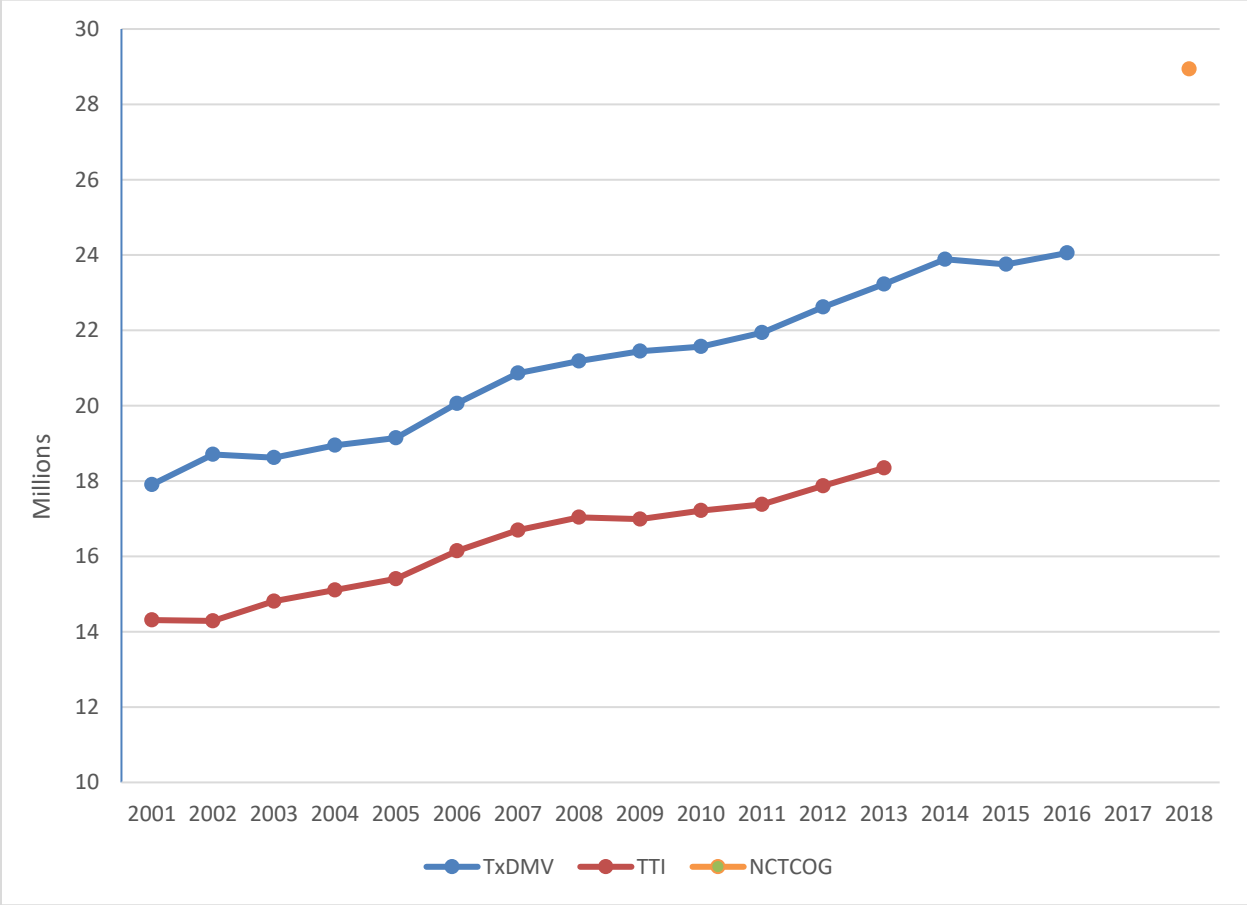


Figure 2. Total Vehicles 2001-2018

Key comparisons of the datasets summarized in Table 2 are illustrated graphically in Figures 2 to 4. Figure 2 focuses on total vehicles and illustrates the observation noted above, that the two datasets (TxDMV and TTI) are distinct, as well as the outlier character of the 2018 data (represented as a single data point in green). Most, but not all of the variation in slope between the two primary datasets may be attributed to the FY versus CY aspect. Year 2002 is an exception, as is the 2008 – 2009 period (discussed below). This graphic provided the pivotal confirmation (of two distinct datasets) that led to the specific inquiries of the TxDMV about the definition of “vehicle” and ultimately eliminated the economic growth hypothesis from further consideration.

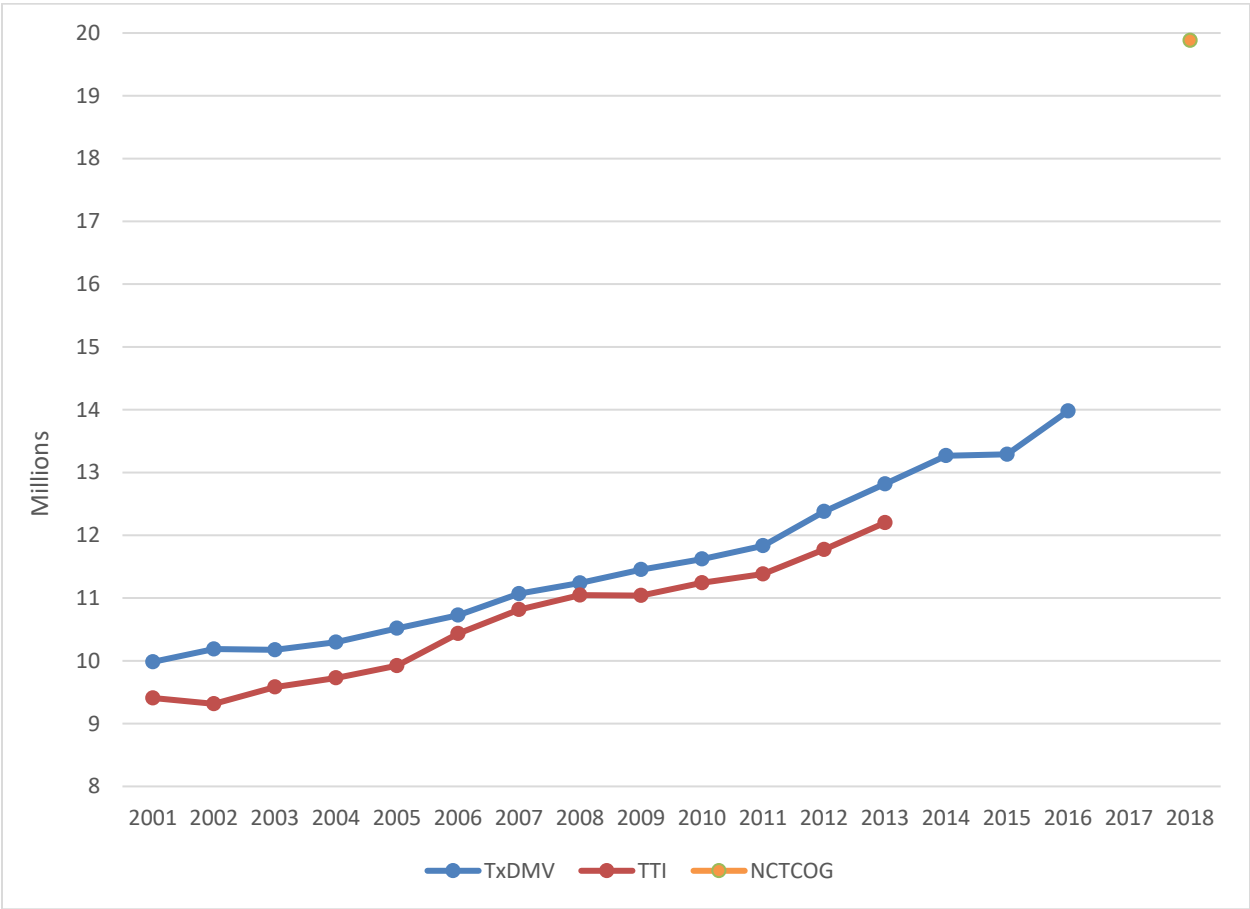


Figure 3. Passenger Vehicles 2001-2018

Figure 3 focuses on passenger vehicles. Here the existence of two distinct datasets is still visible, but the differences are much less pronounced. The near convergence around 2006 – 2008 is believed to be due to the transfer of slightly heavier trucks to passenger vehicles due to the economic recession around that time. (This is largely anecdotal.) As with Figure 2. Total Vehicles 2001-2018 (Total Vehicles), the 2018 data is an extreme outlier to both datasets.

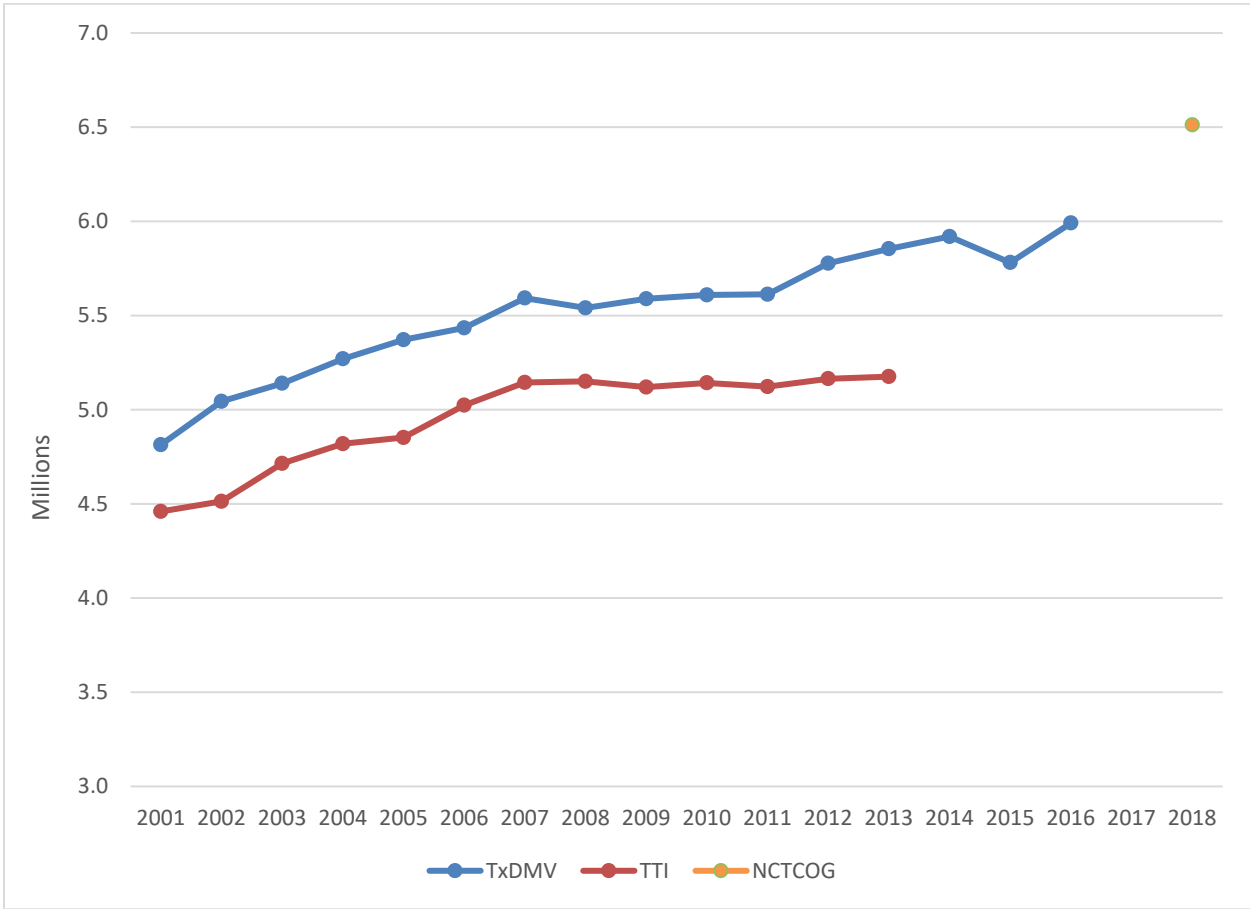


Figure 4. Total Trucks vs. Trucks <=8500

Figure 4 compares the TxDMV “Total Truck” category with the TTI “Trucks <=8500” category. Recall that these are virtually equivalent, however, because the TxDMV dataset defines “Trucks” by curb weight (up to 10,000 pounds) which excludes the heaviest trucks. This is due to the financial aspects of the data, wherein the heaviest trucks are assessed differently than the lighter trucks (which are assessed similar to passenger vehicles.) Consequently, the labels are slightly misleading and the two categories are approximately equivalent. The approximately parallel tracking of the two datasets is clear. The divergent slope from 2011 to 2013 may represent the acquisition of more trailers in response to economic growth. (This is hypothesis/speculation, requiring verification). More notable is the 2018 value, which is defined the same as the TTI category (“Trucks <=8500 GVWR”) but appears to be a possible extension of the TxDMV dataset which ends at 2016. Whether this is significant or not is unclear, again requiring verification.

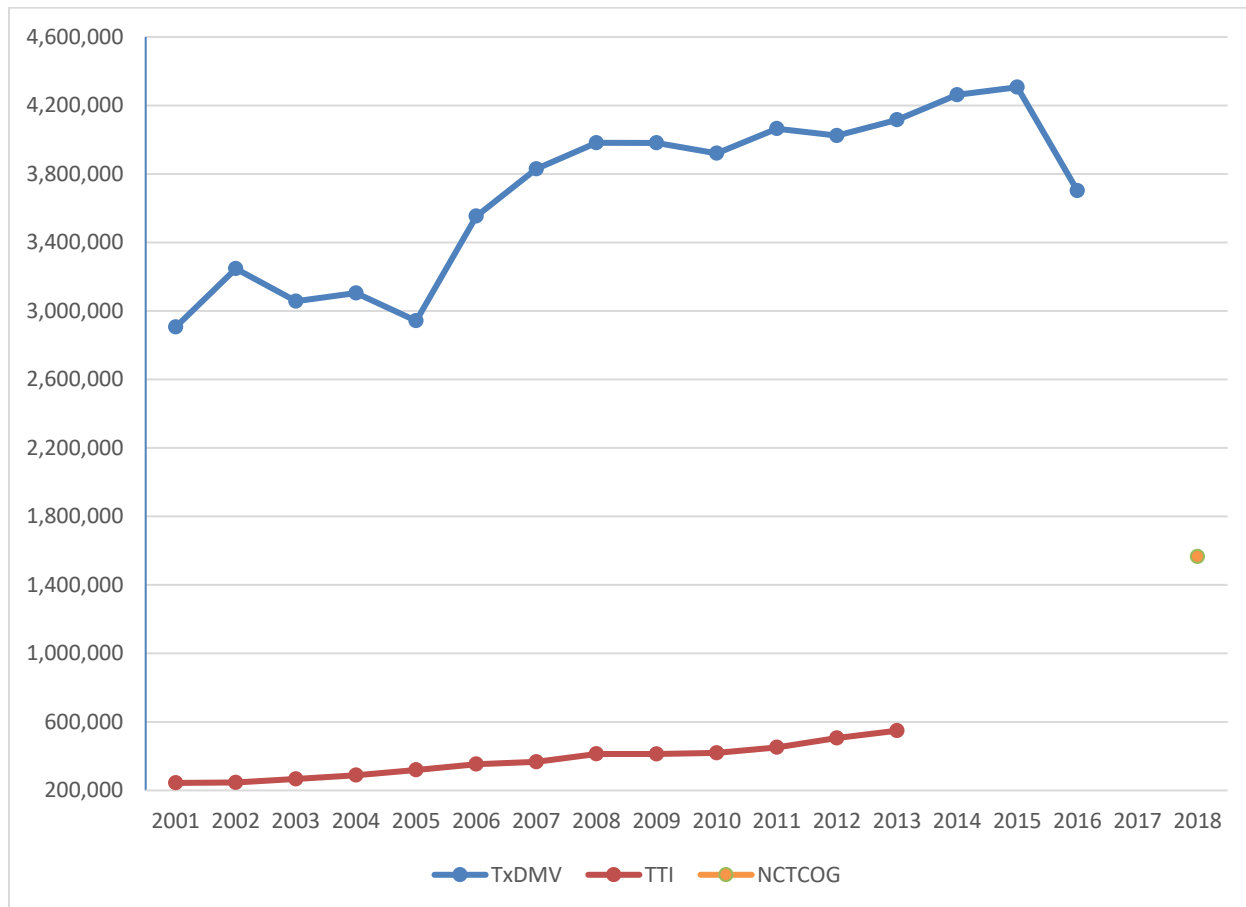


Figure 5. Other vs. Trucks 2001-2018

Perhaps the most ambiguous comparison is between the remaining categories, the TxDMV's "Other" category which presumably includes heavy trucks (as well as other vehicles) and the TTI category which is strictly defined and limited to trucks ≥ 8500 GVWR. The 2018 data is defined the same way but is subject to the definition of "vehicles" issue discussed above. This latter comparison is the anomaly observed from the verification using the SUT procedure that revealed the difference in locally based / short haul heavy trucks (MOVES SUT 61 and 62), presumptively attributed primarily to the inclusion of trailers in those categories.

The TxDMV "Other" category is hard to interpret without additional information from the TxDMV. The variation over time implies a complex mix of vehicles, as well as possible changes in the categorization parameters. The dip from 2015 to 2016 is especially curious, as is the dip in 2005. Table 2 indicates that the difference in the scale of the two, though significant, is not obscuring any details of the TTI data similar to the more dramatic trends in the TxDMV data.

The unavoidable conclusion from our examination of these three datasets is that the 2018 data obtained from NCTCOG is inconsistent with both the earlier TTI data and the current TxDMV data taken directly from the TxDMV website. The selection protocol for the TTI data is known (at least in the context of the categories of vehicles requested and on the basis of technical discussions with analysts when these requests were initiated ca 2000), and the difference in that protocol for the TxDMV website is known (though not fully quantified or verified). However, the difference between the website TxDMV data and the 2018 NCTCOG provided data is not known.

NEXT STEPS: OPTIONS AND DECISIONS NECESSARY FOR RESOLUTION

There are several issues, associated options, and related decisions necessary to move forward. Based on the discussion that accompanied the creation of the Work Group at the TWG meeting of March 7th, these will be the purview of the Work Group, and will include:

The appropriate protocol for obtaining registration data in the future.

There are two options:

- Direct request by TTI to TxDVM. It replicates the earlier TTI to TxDOT then TTI to TxDVM procedure, maintaining a direct link between the provider and implementation.
- The other option is for TxDOT to request the data, possibly under the auspices of some kind of memorandum of understanding. This formalizes the process and may have organizational or institutional advantages, but introduces an intermediate step, possibly complicating the provenance of the data, as well as increasing the probability of error.

Integration of the new data into the emissions estimation process.

Each round of new / updated data has historically been integrated into the process incrementally on a case-by-case basis, with preference given to introduction at the budget (MVEB) stage to avoid distortions from demonstrating conformity with different activity data than was used to determine the budget. This procedure is long-standing and well justified. There is no need to change this procedure. As noted in the presentation to TWG on March 7th and in subsequent discussion, the decisions regarding appropriate inputs and data are made on a case by case basis by the consultation partners, including the sequencing of inputs and continuity with budget assumptions and inputs.

Handling of the missing years of registration data.

The obvious strategy is to use the same approach used for new data (individual case-by-case decisions based on the budget setting inputs) to maintain procedural consistency and use the closest available year for analysis years for which the data are missing (again case-by-case).

Use of this as an opportunity to review (and possibly revise) the management and stewardship of the registration data (and perhaps the other data sets involved in emissions estimation and conformity determination).

Though not an explicit element in the mission of the TWG sponsored work group, this could be a logical extension of their registration data related activities.

APPENDIX 1

Technical Working Group

Agenda

Thursday, May 3, 2018

10:00am – 3:00pm

Texas A&M Transportation Institute

2929 Research Parkway, Rm 103

College Station, TX 77840

WebEx: <https://tti-tamu.webex.com/join/M-Venugopal@tti.tamu.edu>

Phone: 855-282-6330

Access Code: 927 656 613

10:00 am – 10:15 am	Introductions
10:15 am – 11:15 am	Primary Discussion Items
	<ul style="list-style-type: none"> TxDOT Near Road Study Project Update – <i>Reza Farzaneh and Suriya Vallamsundar, TTI</i> National Near Road study – <i>Steve Brown, Sonoma Tech</i> Texas Vehicle Registration Data Update and Discussion– <i>Dennis Perkinson, TTI</i>
11:15 am – 11:45 am	TWG Subcommittees Breakout Session
	<ul style="list-style-type: none"> Near Nonattainment/Ozone Advance Subcommittee – <i>Darcie Schipull, Chair</i> MOSERS Subcommittee – <i>Madhu Venugopal, Chair</i>
11:45 am – 1:00 pm	Working Lunch – CMAQ PM3 Target Setting Discussions
1:00 pm – 1:30 pm	Subcommittee Status Updates
	<ul style="list-style-type: none"> Near Nonattainment/Ozone Advance Subcommittee – <i>Darcie Schipull, Chair</i> MOSERS Subcommittee – <i>Madhu Venugopal, Chair</i>
1:30 pm – 3:00 pm	Agency Information & Updates
	<p>EPA – <i>Jeff Riley</i></p> <ul style="list-style-type: none"> NAAQS Conformity MOVES <p>FHWA – <i>Jose Campos/Barbara Maley</i></p> <ul style="list-style-type: none"> Transportation Conformity CMAQ Laws and regulations Policy and guidance Training Other/GHG Update <p>TxDOT TPP – <i>Raymond Sanchez (H-GAC, El Paso), Nick Page (NCTCOG)</i></p> <p>Field representative updates</p> <p>TxDOT ENV – <i>Jackie Ploch</i></p> <ul style="list-style-type: none"> Topics of interest to TWG/research projects <p>TCEQ – <i>Jamie Zech</i></p> <ul style="list-style-type: none"> SIP updates Near-road monitors update <p>TTI – <i>Joe Zietsman and Madhu Venugopal</i></p> <p>MPO's (for those in attendance)</p> <ul style="list-style-type: none"> Status and updates
3:00 pm	Follow-Up Actions – <i>Laura Norton and Kristi Holstead</i>

Handouts: <http://www.nctcoq.org/trans/air/documents/AQHandbook2018.pdf>

Vehicle Registration Data

What it is and why we should care!

3 May 2018

Dennis Perkinson, Ph.D.

What is it?

- Motor vehicle registration defined.
- Why do we register vehicles?
- Who's in charge?
- What do we mean when we say vehicle registration?

Model Year

PROGRAM: AGEPEREN
 WRITTEN BY: KATHY SMITH
 TEXAS DEPARTMENT OF MOTOR VEHICLES
 AGE COUNTS BY COUNTY USING GROSS WEIGHT
 RUN DATE 02/05/14
 PAGE 101

YEAR	PASSENGER	MOTOR-CYCLES	TRUCKS <=6000	TRUCKS >6000 <=8500	TOTAL TRUCKS <=8500	GAS TRUCKS >8500	DIESEL TRUCKS >8500	TOTAL TRUCKS >8500	TOTAL ALL TRUCKS
2013	157,605	3,363	11,072	27,276	38,348	4,522	3,160	7,682	46,030
2012	138,503	3,351	11,677	22,667	34,344	3,224	6,179	9,403	43,747
2011	116,038	2,245	12,503	22,869	35,372	2,257	4,321	6,578	41,950
2010	110,685	1,670	11,705	18,131	29,836	1,015	1,657	2,672	32,508
2009	99,036	3,986	11,455	14,710	26,165	1,275	1,762	3,037	29,202
2008	141,940	3,859	22,648	27,828	50,476	2,779	4,718	7,497	57,973
2007	147,227	4,762	26,099	30,693	56,792	1,480	4,310	5,790	62,582
2006	135,854	4,024	30,002	18,317	48,319	1,520	4,087	5,607	53,926
2005	125,276	3,109	29,723	17,598	47,321	1,265	3,552	4,817	52,138
2004	107,881	2,353	30,501	22,092	52,593	993	2,487	3,480	56,073
2003	101,416	2,851	34,860	18,764	53,624	878	1,877	2,755	56,379
2002	97,844	2,404	39,911	14,766	54,677	701	1,825	2,526	57,203
2001	89,544	1,764	35,478	13,335	48,813	776	1,887	2,663	51,476
2000	85,149	1,413	29,982	8,466	38,448	710	2,034	2,744	41,192
1999	66,232	1,119	24,516	8,588	33,104	577	1,667	2,244	35,348
1998	53,032	798	20,679	3,273	23,952	330	905	1,235	25,187
1997	41,585	513	18,391	4,138	22,529	431	1,023	1,454	23,983
1996	29,750	555	11,985	2,529	14,514	230	710	940	15,454
1995	24,884	456	12,009	2,195	14,204	469	618	1,087	15,291
1994	17,081	356	10,291	1,193	11,484	176	478	654	12,138
1993	12,790	269	6,884	947	7,831	123	361	484	8,315
1992	9,484	188	4,988	630	5,618	93	266	359	5,977
1991	7,235	129	3,904	438	4,342	96	317	413	4,755
1990	5,463	147	3,378	325	3,703	126	241	367	4,070
1989	3,738	121	2,954	293	3,247	73	209	282	3,529
1988	2,788	134	2,078	193	2,271	91	138	229	2,500
1987	2,218	109	1,361	92	1,453	77	89	166	1,619
1986	1,821	177	1,571	128	1,699	77	48	125	1,824
1985	1,848	155	1,326	129	1,455	46	35	81	1,536
1984	1,521	114	1,241	127	1,368	35	39	74	1,442
OLDER	13,421	1,205	6,606	521	7,127	194	54	248	7,375
TOTAL	1,948,894	47,699	471,778	303,251	775,029	26,639	51,054	77,693	852,722



Vehicle Categories

PROGRAM: AGEPEREN
 WRITTEN BY: KATHY SMITH
 TEXAS DEPARTMENT OF MOTOR VEHICLES
 AGE COUNTS BY COUNTY USING GROSS WEIGHT
 RUN DATE 02/05/14
 PAGE 101

YEAR	PASSENGER	MOTOR-CYCLES	TRUCKS <=6000	TRUCKS >6000 <=8500	TOTAL TRUCKS <=8500	GAS TRUCKS >8500	DIESEL TRUCKS >8500	TOTAL TRUCKS >8500	TOTAL ALL TRUCKS
2013	157,605	3,363	11,072	27,276	38,348	4,522	3,160	7,682	46,030
2012	138,503	3,351	11,677	22,667	34,344	3,224	6,179	9,403	43,747
2011	116,038	2,245	12,503	22,869	35,372	2,257	4,321	6,578	41,950
2010	110,685	1,670	11,705	18,131	29,836	1,015	1,657	2,672	32,508
2009	99,036	3,986	11,455	14,710	26,165	1,275	1,762	3,037	29,202
2008	141,940	3,859	22,648	27,828	50,476	2,779	4,718	7,497	57,973
2007	147,227	4,762	26,099	30,693	56,792	1,480	4,310	5,790	62,582
2006	135,854	4,024	30,002	18,317	48,319	1,520	4,087	5,607	53,926
2005	125,276	3,109	29,723	17,598	47,321	1,265	3,552	4,817	52,138
2004	107,881	2,353	30,501	22,092	52,593	993	2,487	3,480	56,073
2003	101,416	2,851	34,860	18,764	53,624	878	1,877	2,755	56,379
2002	97,844	2,404	39,911	14,766	54,677	701	1,825	2,526	57,203
2001	89,544	1,764	35,478	13,335	48,813	776	1,887	2,663	51,476
2000	85,149	1,413	29,982	8,466	38,448	710	2,034	2,744	41,192
1999	66,232	1,119	24,516	8,588	33,104	577	1,667	2,244	35,348
1998	53,032	798	20,679	3,273	23,952	330	905	1,235	25,187
1997	41,585	513	18,391	4,138	22,529	431	1,023	1,454	23,983
1996	29,750	555	11,985	2,529	14,514	230	710	940	15,454
1995	24,884	456	12,009	2,195	14,204	469	618	1,087	15,291
1994	17,081	356	10,291	1,193	11,484	176	478	654	12,138
1993	12,790	269	6,884	947	7,831	123	361	484	8,315
1992	9,484	188	4,988	630	5,618	93	266	359	5,977
1991	7,235	129	3,904	438	4,342	96	317	413	4,755
1990	5,463	147	3,378	325	3,703	126	241	367	4,070
1989	3,738	121	2,954	293	3,247	73	209	282	3,529
1988	2,788	134	2,078	193	2,271	91	138	229	2,500
1987	2,218	109	1,361	92	1,453	77	89	166	1,619
1986	1,821	177	1,571	128	1,699	77	48	125	1,824
1985	1,848	155	1,326	129	1,455	46	35	81	1,536
1984	1,521	114	1,241	127	1,368	35	39	74	1,442
OLDER	13,421	1,205	6,606	521	7,127	194	54	248	7,375
TOTAL	1,948,894	47,699	471,778	303,251	775,029	26,639	51,054	77,693	852,722



Vehicles

PROGRAM: AGEPERK
 WRITTEN BY: KATHY SMITH
 TEXAS DEPARTMENT OF MOTOR VEHICLES
 AGE COUNTS BY COUNTY USING GROSS WEIGHT
 RUN DATE 02/05/14
 PAGE 101

YEAR	PASSENGER	MOTOR-CYCLES	TRUCKS <=6000	TRUCKS >6000 <=8500	TOTAL TRUCKS <=8500	TRUCKS >8500	DIESEL TRUCKS >8500	TOTAL TRUCKS >8500	TOTAL ALL TRUCKS
2013	157,605	3,363	11,072	27,276	38,348	4,522	3,160	7,682	46,030
2012	138,503	3,351	11,677	22,667	34,344	3,224	6,179	9,403	43,747
2011	116,038	2,245	12,503	22,869	35,372	2,257	4,321	6,578	41,950
2010	110,685	1,670	11,705	18,131	29,836	1,015	1,697	2,672	32,508
2009	99,036	3,986	11,455	14,710	26,165	1,275	1,762	3,037	29,202
2008	141,945	3,859	22,648	27,828	50,476	2,779	4,718	7,497	57,973
2007	147,227	4,762	26,089	30,693	56,782	1,480	4,310	5,790	62,582
2006	135,854	4,024	30,002	18,317	48,319	1,520	4,087	5,607	53,926
2005	125,276	3,109	29,723	17,598	47,321	1,265	3,552	4,817	52,138
2004	107,881	2,353	30,501	22,092	52,593	993	2,487	3,480	56,073
2003	101,416	2,851	34,860	18,764	53,624	878	1,877	2,755	56,379
2002	97,844	2,404	39,911	14,766	54,677	701	1,825	2,526	57,203
2001	89,544	1,764	35,478	13,355	48,833	776	1,887	2,663	51,476
2000	85,149	1,413	29,982	8,466	38,448	710	2,034	2,744	41,192
1999	66,232	1,119	24,516	8,588	33,104	577	1,667	2,244	35,348
1998	53,032	798	20,679	3,273	23,952	330	905	1,235	25,187
1997	41,585	513	18,391	4,138	22,529	431	1,023	1,454	23,983
1996	29,750	555	11,985	2,529	14,514	230	710	940	15,454
1995	24,884	456	12,009	2,195	14,204	469	618	1,087	15,291
1994	17,081	356	10,291	1,193	11,484	176	478	654	12,138
1993	12,750	269	6,884	947	7,831	123	361	484	8,315
1992	3,484	188	4,988	630	5,618	93	266	359	5,977
1991	7,235	129	3,904	498	4,342	96	317	413	4,755
1990	5,463	147	3,378	325	3,703	126	241	367	4,070
1989	3,738	121	2,954	293	3,247	73	209	282	3,529
1988	2,788	134	2,078	193	2,271	91	138	229	2,500
1987	2,218	109	1,361	92	1,453	77	89	166	1,619
1986	1,821	177	1,571	128	1,699	77	48	125	1,824
1985	1,848	155	1,326	129	1,455	46	35	81	1,536
1984	1,521	114	1,241	127	1,368	35	39	74	1,442
OLDER	13,421	1,205	6,606	521	7,127	194	54	248	7,375
TOTAL	1,948,894	47,699	471,778	303,251	775,029	26,639	51,054	77,693	852,722



Heavy Truck Sub-Categories

DELPERK
 WRITTEN BY: KATHY SMITH
 TEXAS DEPARTMENT OF MOTOR VEHICLES
 DIESEL TRUCK COUNTS BY COUNTY USING GROSS WEIGHT
 RUN DATE 02/05/14
 PAGE 101

YEAR	DIESEL > 8500	DIESEL > 10000	DIESEL > 14000	DIESEL > 16000	DIESEL > 18500	DIESEL > 24000	DIESEL > 32000	DIESEL > 60000	TOTAL
2013	1,743	402	112	285	334	79	107	98	3,160
2012	3,765	961	214	494	488	74	109	74	6,179
2011	2,694	673	98	280	358	71	89	58	4,321
2010	946	148	60	73	291	62	38	39	1,697
2009	793	268	61	138	292	61	136	93	1,762
2008	2,523	686	359	356	456	132	129	77	4,718
2007	1,281	514	423	334	928	234	409	187	4,310
2006	1,560	621	302	316	662	157	299	170	4,087
2005	1,656	329	183	205	546	145	234	254	3,552
2004	1,017	275	180	137	439	79	170	190	2,487
2003	782	203	149	112	262	101	152	96	1,877
2002	660	235	202	104	301	92	159	75	1,825
2001	550	281	182	119	402	87	187	79	1,887
2000	447	315	208	123	445	129	286	81	2,034
1999	342	282	156	113	385	95	226	68	1,667
1998	106	60	115	34	288	90	180	32	905
1997	159	125	184	32	266	70	148	39	1,023
1996	80	61	80	86	143	50	175	35	710
1995	93	63	36	17	134	42	246	27	618
1994	152	52	60	13	86	39	201	22	478
1993	29	31	11	10	68	28	168	16	361
1992	34	28	9	10	32	18	126	9	266
1991	22	22	37	51	44	25	108	8	317
1990	20	23	9	19	45	26	89	10	241
1989	3	15	31	17	32	9	89	13	209
1988	5	13	1	5	14	6	94	0	138
1987	4	5	6	4	9	10	44	7	89
1986	7	1	0	3	9	1	26	1	48
1985	5	6	0	1	3	4	14	2	35
1984	2	4	0	0	8	6	19	0	39
OLDER	6	2	1	3	7	7	27	1	54
TOTAL	21,314	6,724	3,444	3,491	7,717	2,039	4,464	1,861	51,054

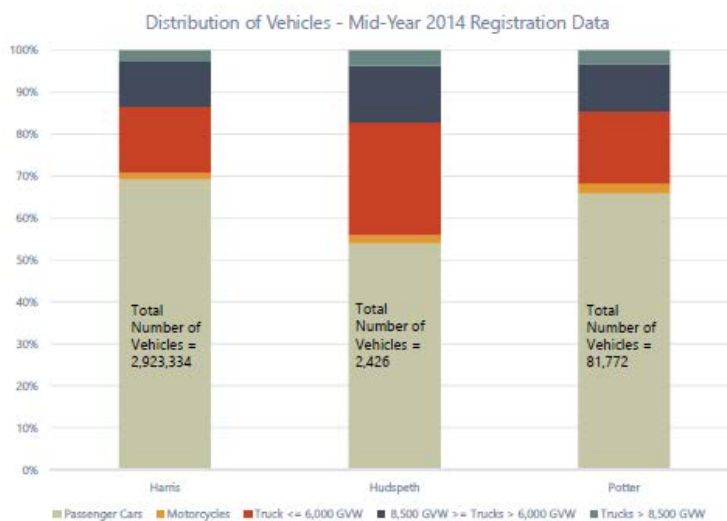


How does it vary by county?

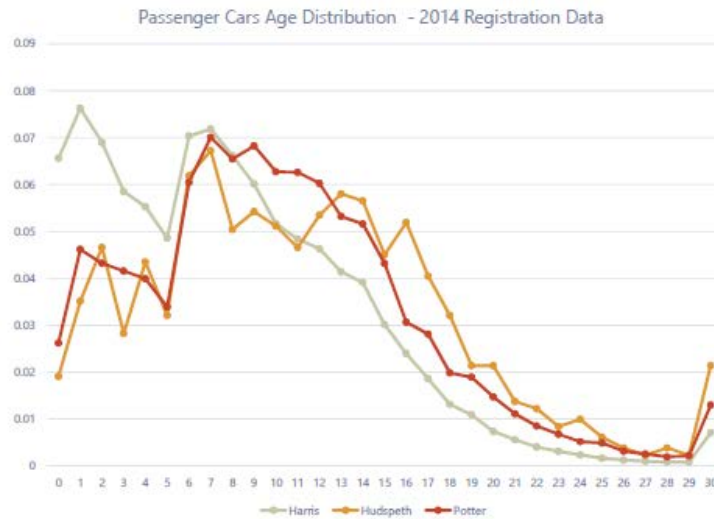
- Texas has 254 counties.
- These counties are very different in terms of physical size, demography, road network, etc.
- Not surprisingly, they also vary widely in terms of fleet composition.

Here's an example...

Distribution of Vehicles



Vehicle Age



Where does it come from?

- Originally from TxDOT
- More recently from TxDMV
- Specialized extraction for TTI / conformity.

What is it used for?

Regulatory compliance

Policy analysis

Special studies



11

Regulatory Compliance

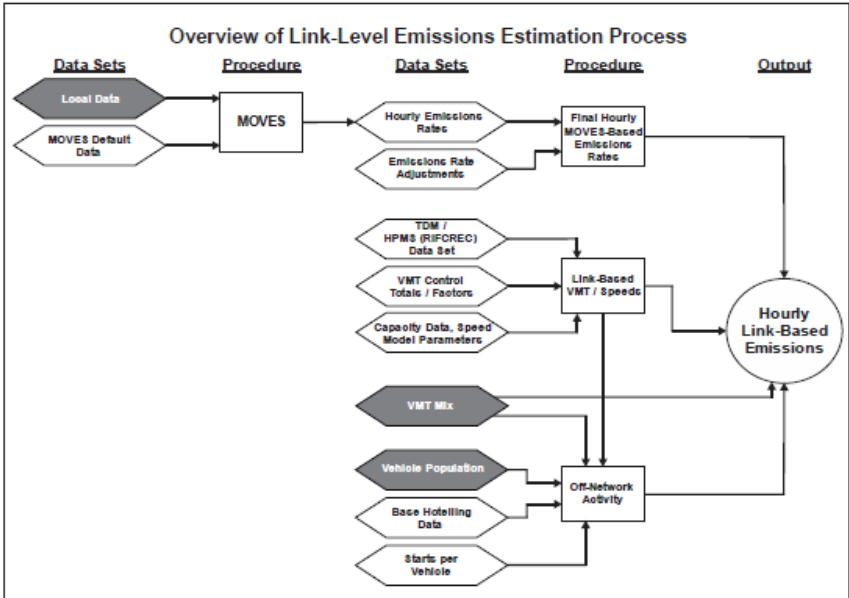
MOVES emissions estimation process overview.

Three purposes:

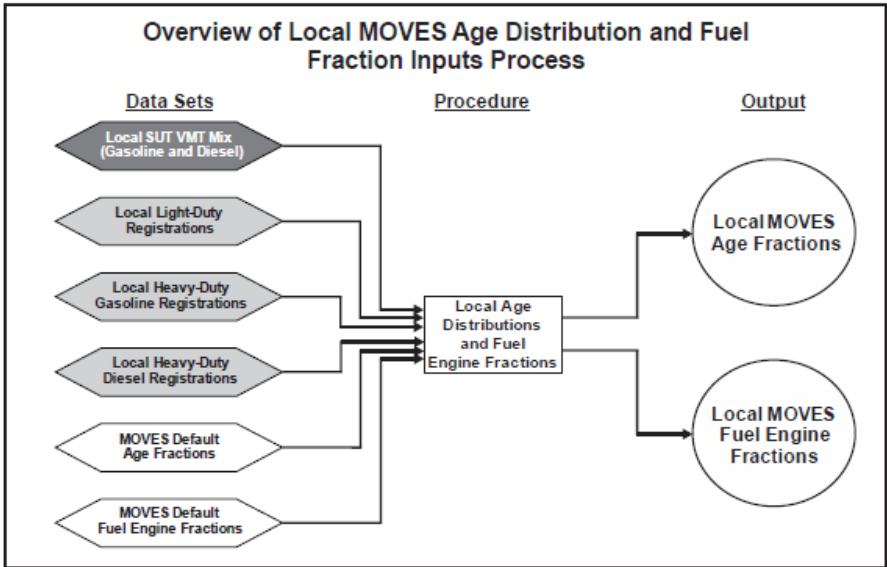
- Emission Rates
- Fuel Fractions
- Vehicle Population
- Source Use Types / VMT Mix



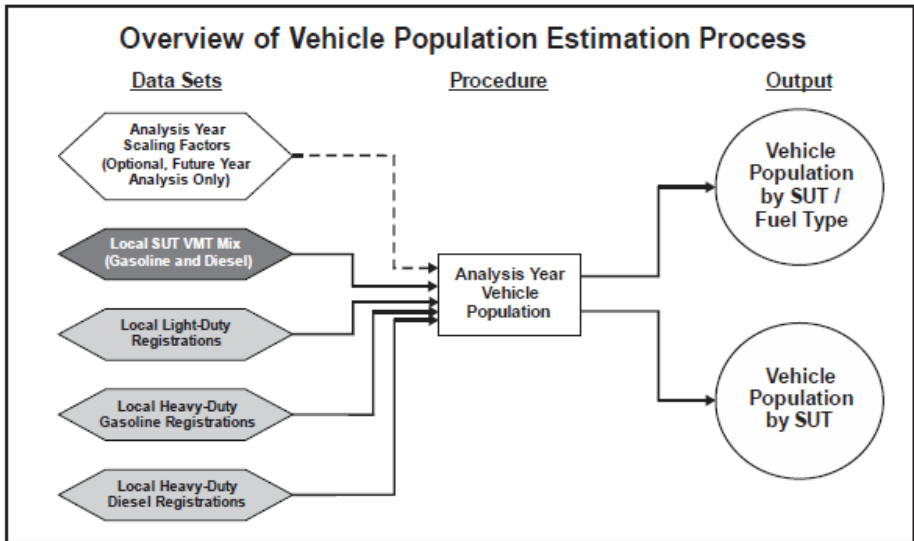
12



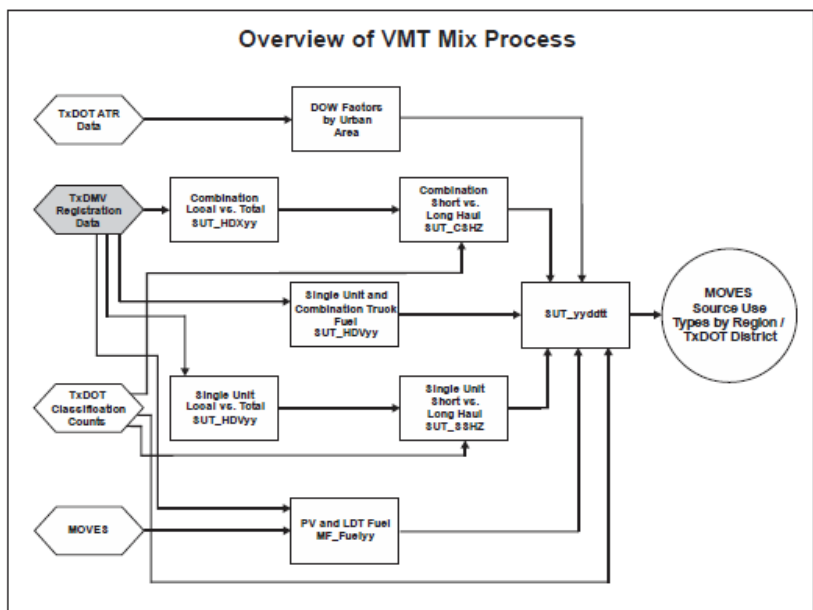
Source: Texas A&M Transportation Institute, January 2016.



Source: Texas A&M Transportation Institute, January 2016.



Source: Texas A&M Transportation Institute, January 2018.



Source: Texas A&M Transportation Institute, January 2018.

Policy Analysis

What is policy analysis?

What if?

What kinds?

- Reduction programs
- Trends / technology



17

Special Studies

What is a special study?

More basic and open than “What if” – Just “What?”

Examples

- External trucks movement
- Micro-economic impacts
- Secondary impacts (e.g., health)



18

What are the alternatives?

Current status

MOVES defaults

Background (How did this happen?)

- Migration to TxDMV
- Budget cuts
- Staff loss
- Computing technology

What are our options?

Discussion

- Legacy Agency to Agency
- Empirical Sampling
- The Myth of Fingerprints (VIN Decoding)
- Transitional Approach

APPENDIX 2

Vehicle Registration Data Update

7 March 2019

Dennis Perkinson, Ph.D.



Terminology

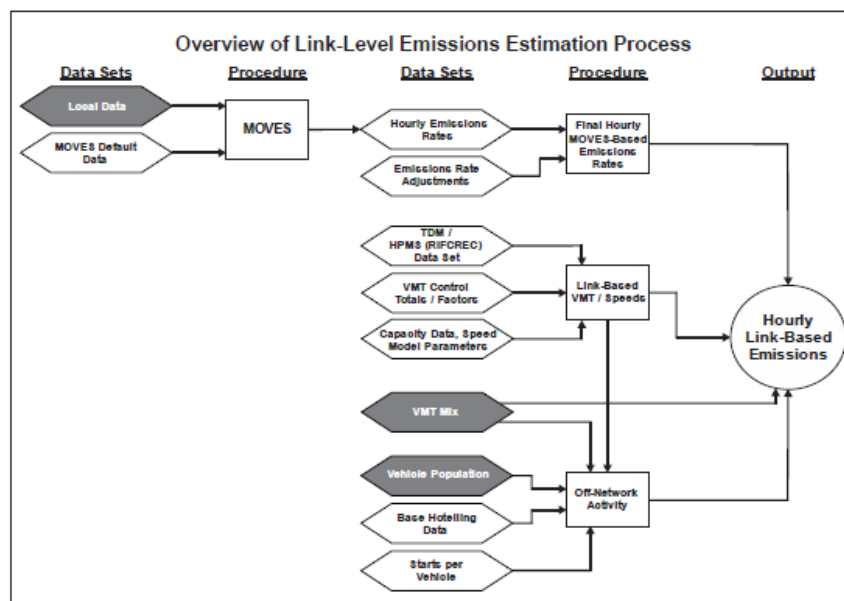
- What do we mean when we say...

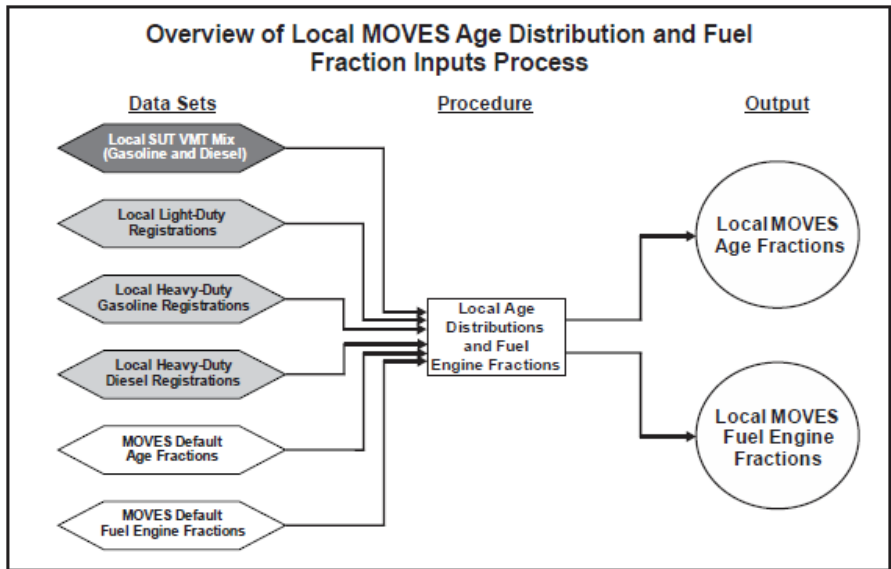
“vehicle registration data”?



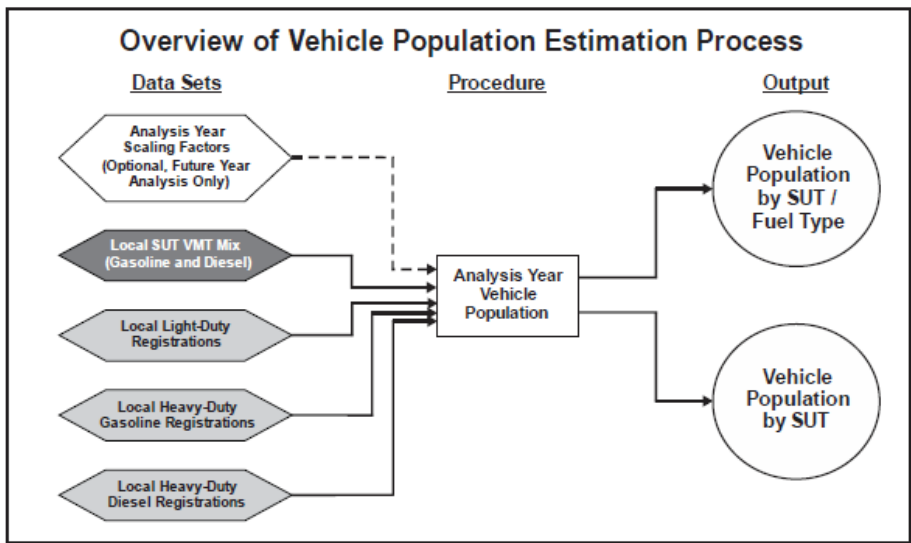
What is it used for?

- MOVES-based emissions estimation process.
- Four applications:
 - Emission Rates
 - Fuel Fractions
 - Vehicle Population
 - Source Use Types / VMT Mix

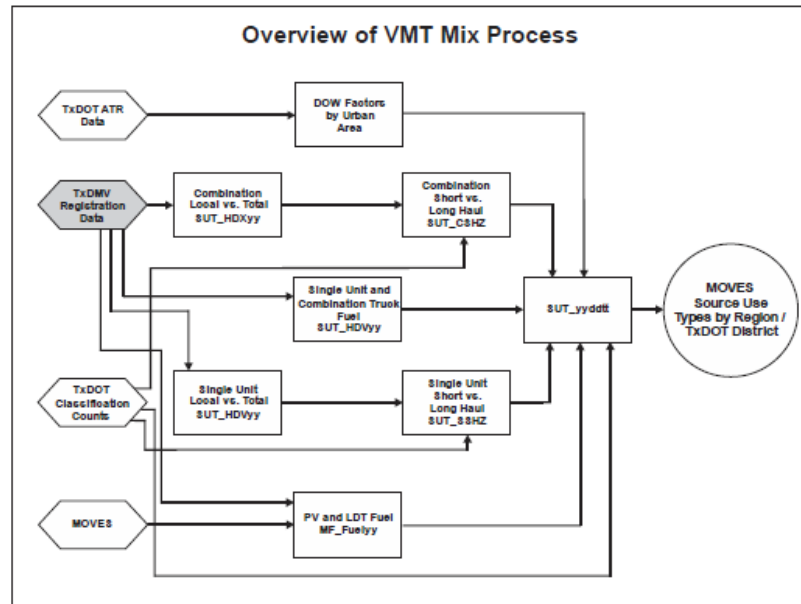




Source: Texas A&M Transportation Institute, January 2018.



Source: Texas A&M Transportation Institute, January 2018.



7

Where are we on this?

Status

- 2018 “Mid-Year” registration data obtained
- Data reviewed – access & structure confirmed
- Source Use Type / VMT mix application confirmed
- MOVES emissions rates application in progress

But...

8

Where are we on this?

- Questions / Possible Issues (2018 vs 2014)
 - Increase in short-haul heavy trucks (vs total heavy trucks)
 - Increase in total vehicles

Where are we on this?

“Data is a four letter word.”

Jim Benson, TTI

Where are we on this?

- Current Activities
 - Dialog with DMV on heavy trucks
 - Dialog with DMV on passenger vehicles
 - Confirmation of procedures & definitions

What do we mean by “latest” planning assumptions?

- Using the "latest" planning assumptions means that the conformity determination
 - is based on the **most current information that is available** to state and local planners
 - (e.g., the MPO or other agency can obtain the information from another agency, the information is appropriate for the current conformity determination, the information is readily transferable for use in transportation and/or emissions modeling, etc.).
- Latest planning assumptions must be derived from the population, employment, travel, and congestion estimates that have been **most recently developed** by the MPO (or other agency authorized to make such estimates), and approved by the MPO (40 CFR 93.110(b)). Once approved, these estimates must be used for determining the latest planning assumptions (40 CFR 93.110(a)).
- The **interagency consultation process must be used** to determine which planning assumptions are considered the latest and best assumptions for conformity determinations. The conformity rule specifically requires that the interagency consultation process be used to evaluate and choose assumptions to be used in Conformity analyses (40 CFR 93.105(c)(1)(i)).
- [EPA420-B-08-901 page 7]

Here are the numbers...

Year	LDV	Trucks	Total
2010J	11,244,210	5,568,851	16,813,061
2011J	11,463,814	5,595,505	17,059,319
2012J	11,791,177	5,670,595	17,461,772
2013J	12,119,562	5,718,293	17,837,855
2014J	12,497,644	5,756,442	18,254,086
2018 - Mid to Late	19,880,929	8,076,559	27,957,488

APPENDIX 3

TEXAS PASSENGER VEHICLES < 6,000 lbs., MOTORCYCLES AND TRUCKS (1 ton or less) REGISTRATIONS

FISCAL YEAR	TOTAL PASSENGER VEHICLES <=6,000 LBS.	TOTAL TRUCKS - 1 ton or less (Pick Ups)	TOTAL MOTORCYCLES	TOTAL ALL VEHICLES REGISTERED	% PASSENGER OF ALL VEHICLES REGISTERED	% TRUCKS OF ALL VEHICLES REGISTERED	MOTORCYCLES OF ALL VEHICLES REGISTERED
2001	9,984,030	4,813,943	201,834	17,906,116	55.76%	26.88%	1.13%
2002	10,187,592	5,044,364	228,626	18,707,486	54.46%	26.96%	1.22%
2003	10,174,751	5,139,701	250,589	18,621,915	54.64%	27.60%	1.35%
2004	10,296,782	5,269,577	278,376	18,949,499	54.34%	27.81%	1.47%
2005	10,517,928	5,371,040	313,619	19,144,792	54.94%	28.05%	1.64%
2006	10,726,666	5,434,231	344,846	20,059,065	53.48%	27.09%	1.72%
2007	11,069,564	5,592,441	372,862	20,864,318	53.06%	26.80%	1.79%
2008	11,239,751	5,540,227	423,351	21,185,173	53.05%	26.15%	2.00%
2009	11,453,354	5,588,568	423,444	21,446,721	53.40%	26.06%	1.97%
2010	11,620,482	5,609,210	419,722	21,570,282	53.87%	26.00%	1.95%
2011	11,832,416	5,612,457	430,422	21,939,786	53.93%	25.58%	1.96%
2012	12,378,139	5,777,174	439,029	22,618,153	54.73%	25.54%	1.94%
2013	12,818,065	5,854,158	438,960	23,227,032	55.19%	25.20%	1.89%
2014	13,267,039	5,918,921	437,949	23,886,263	55.54%	24.78%	1.83%
2015	13,288,425	5,780,988	375,455	23,751,503	55.95%	24.34%	1.58%
2016	13,979,501	5,990,813	380,793	24,053,612	58.12%	24.91%	1.58%
TOTAL	184,834,485	88,337,813	5,003,629	290,126,601			

Exempt registrations are included in passenger vehicle counts and total vehicles registered.

"Passenger < 6,000 lbs." includes: automobiles; mini-vans and most SUVs. "Trucks less than 6,000 lbs." includes 1/2 ton, 3/4 ton and 1 ton trucks.

Source: Fiscal year REGISTRATION CLASS CODE COUNT Report and the Report of Rental Trailers (for All Vehicles Registered) prepared by Explore, Inc.
 Prepared by: VTR - Budget and Research Services - 05/2017

PROGRAM: AGEPERKD
 WRITTEN BY: JOEY OESTRICK

TEXAS DEPARTMENT OF TRANSPORTATION
 AGE COUNTS BY COUNTY USING GROSS WEIGHT

RUN DATE 01/30/02
 PAGE 255

GRAND TOTALS

YEAR MODEL	PASSENGER	MOTOR- CYCLES	TRUCKS <=6000	TRUCKS >6000 <=8500	TOTAL TRUCKS <=8500	GAS TRUCKS >8500	DIESEL TRUCKS >8500	TOTAL TRUCKS >8500	TOTAL ALL TRUCKS
2002	225,143	8,287	79,553	39,142	118,695	1,375	6,763	8,139	126,833
2001	822,437	29,329	350,238	137,480	487,718	5,840	20,818	26,658	514,376
2000	859,779	23,617	306,241	97,412	403,653	7,115	18,691	25,806	429,459
1999	772,128	18,556	270,345	117,383	387,728	6,717	18,981	25,698	413,426
1998	697,335	13,585	259,614	46,471	306,085	4,318	10,567	14,885	320,970
1997	670,114	10,824	268,214	66,146	334,360	6,004	10,307	16,311	350,671
1996	615,283	10,166	199,785	46,074	245,859	3,661	7,456	11,117	256,976
1995	682,713	8,242	227,441	43,654	271,095	8,721	6,235	14,956	286,051
1994	564,396	6,707	229,529	29,415	258,944	3,472	7,004	10,476	269,420
1993	529,506	5,796	181,733	26,940	208,673	3,061	6,254	9,315	217,988
1992	455,672	4,034	156,182	19,903	176,085	2,500	4,383	6,883	182,968
1991	424,653	2,856	144,004	15,428	159,432	2,561	5,100	7,661	167,093
1990	371,869	2,845	121,107	12,386	133,493	2,554	4,789	7,343	140,836
1989	330,388	3,028	121,324	13,004	134,328	2,238	3,855	6,093	140,421
1988	269,643	2,680	104,376	10,540	114,916	2,473	3,070	5,543	120,459
1987	206,757	2,865	75,594	5,972	81,566	2,098	2,517	4,615	86,181
1986	179,092	5,059	87,060	9,868	96,928	2,754	2,584	5,338	102,266
1985	158,550	4,896	78,801	9,612	88,413	2,933	2,729	5,662	94,075
1984	152,844	2,704	68,841	8,767	77,608	2,188	2,344	4,532	82,140
1983	75,145	4,124	43,553	5,309	48,862	1,296	1,006	2,302	51,164
1982	53,228	5,525	45,152	5,505	50,657	2,129	1,551	3,680	54,337
1981	40,526	4,071	37,752	3,333	41,105	1,904	1,458	3,362	44,467
1980	31,039	3,635	21,545	2,774	24,319	1,887	640	2,527	26,846
1979	41,318	2,636	31,217	4,495	35,712	2,495	702	3,197	38,909
1978	33,011	2,206	29,035	3,217	32,252	1,721	449	2,170	34,422
1977	24,753	1,487	21,535	2,856	24,391	1,471	292	1,763	26,154
OLDER	149,828	8,319	109,074	8,200	117,274	7,152	688	7,840	125,114
TOTAL	9,407,402	199,281	3,668,595	791,306	4,459,901	92,638	151,138	243,776	4,703,677

PROGRAM: AGEPERKD
 WRITTEN BY: JOEY OBSTRICK

TEXAS DEPARTMENT OF TRANSPORTATION
 AGE COUNTS BY COUNTY USING GROSS WEIGHT

RUN DATE 01/22/03
 PAGE 255

GRAND TOTALS

YEAR MODEL	PASSENGER	MOTOR- CYCLES	TRUCKS <=6000	TRUCKS >6000 <=8500	TOTAL TRUCKS <=8500	GAS TRUCKS >8500	DIESEL TRUCKS >8500	TOTAL TRUCKS >8500	TOTAL ALL TRUCKS
2002	801,444	33,357	340,361	130,666	471,027	4,124	18,308	22,432	493,459
2001	815,837	29,011	340,442	135,323	475,765	6,431	20,720	27,151	502,916
2000	846,209	22,446	301,470	94,926	396,396	7,167	18,355	25,522	421,918
1999	758,227	17,625	260,799	110,575	371,374	6,668	18,311	24,979	396,353
1998	674,267	12,866	250,641	44,238	294,879	4,459	10,173	14,632	309,511
1997	646,926	10,276	259,696	62,934	322,630	5,872	9,939	15,811	338,441
1996	592,008	9,534	193,670	43,787	237,457	3,514	7,301	10,815	248,272
1995	649,698	7,852	219,361	41,491	260,852	8,203	6,335	14,538	275,390
1994	532,427	6,304	221,486	27,861	249,347	3,349	6,731	10,080	259,427
1993	486,626	5,357	171,689	25,465	197,154	2,818	5,990	8,808	205,962
1992	413,193	3,789	137,867	18,643	156,510	2,303	4,076	6,379	162,889
1991	375,246	2,662	122,779	14,281	137,060	2,351	4,777	7,128	144,188
1990	322,413	2,604	104,977	11,420	116,397	2,318	4,493	6,811	123,208
1989	278,214	2,734	104,359	11,829	116,188	2,020	3,642	5,662	121,850
1988	221,543	2,463	88,621	9,516	98,137	2,228	2,854	5,082	103,219
1987	166,343	2,628	63,313	5,289	68,602	1,864	2,373	4,237	72,839
1986	141,297	4,533	73,029	8,721	81,750	2,434	2,302	4,736	86,486
1985	124,872	4,417	66,473	8,592	75,065	2,590	2,419	5,009	80,074
1984	96,249	3,347	57,795	7,621	65,416	1,915	1,974	3,889	69,305
1983	58,599	3,686	36,572	4,602	41,174	1,079	872	1,951	43,125
1982	41,233	4,885	38,260	4,752	43,012	1,818	1,305	3,123	46,135
1981	31,763	3,573	31,828	2,856	34,684	1,585	1,219	2,804	37,488
1980	24,465	3,239	18,125	2,395	20,520	1,534	539	2,073	22,593
1979	33,227	2,406	26,451	3,824	30,275	2,054	594	2,638	32,913
1978	26,678	1,937	24,868	2,846	27,714	1,390	360	1,750	29,464
1977	20,277	1,318	18,350	2,438	20,788	1,205	233	1,438	22,226
OLDER	134,836	7,675	96,118	7,097	103,215	5,917	572	6,489	109,704
TOTAL	9,315,117	212,524	3,669,400	843,988	4,513,388	89,210	156,757	245,967	4,759,355

PROGRAM: AGEPERKD
 WRITTEN BY: JOEY OESTRICK

TEXAS DEPARTMENT OF TRANSPORTATION
 AGE COUNTS BY COUNTY USING GROSS WEIGHT

RUN DATE 06/03/04
 PAGE 255

GRAND TOTALS

YEAR MODEL	PASSENGER	MOTOR- CYCLES	TRUCKS		TOTAL	GAS		DIESEL	TOTAL	TOTAL
			<=6000	>6000	TRUCKS <=8500	>8500	TRUCKS >8500	TRUCKS >8500	TRUCKS >8500	ALL TRUCKS
2004	181,381	4,885	30,448	31,742	62,190	689	6,960	7,649	69,839	
2003	751,361	37,003	286,830	151,492	438,322	4,530	22,225	26,755	465,077	
2002	800,805	33,460	330,047	127,372	457,419	4,481	18,064	22,545	479,964	
2001	800,864	27,519	332,385	131,118	463,503	6,545	19,963	26,508	490,011	
2000	829,130	21,502	286,376	90,284	376,660	7,098	17,693	24,791	401,451	
1999	735,007	16,865	250,344	104,017	354,361	6,743	17,443	24,186	378,547	
1998	653,503	12,479	242,518	42,325	284,843	4,473	9,807	14,280	299,123	
1997	623,773	9,813	250,853	59,742	310,595	5,811	9,450	15,269	325,664	
1996	563,774	9,177	187,332	41,735	229,067	3,361	7,123	10,484	239,551	
1995	609,159	7,550	210,707	39,533	250,240	7,644	6,291	13,935	264,175	
1994	493,365	6,011	211,133	26,381	237,514	3,073	6,421	9,494	247,008	
1993	442,253	5,077	154,976	24,015	178,991	2,554	5,638	8,192	187,183	
1992	368,854	3,605	121,711	17,421	139,132	2,057	3,835	5,892	145,024	
1991	326,103	2,537	107,525	13,090	120,615	2,111	4,415	6,526	127,141	
1990	274,302	2,556	92,358	10,476	102,834	2,056	4,189	6,245	109,079	
1989	229,692	2,630	91,026	10,791	101,807	1,810	3,503	5,313	107,120	
1988	178,212	2,310	76,266	8,490	84,756	2,022	2,654	4,676	89,432	
1987	132,045	2,521	53,749	4,641	58,390	1,553	2,193	3,746	62,136	
1986	110,622	4,220	62,342	7,637	69,979	2,146	2,049	4,195	74,174	
1985	96,986	4,158	56,089	7,325	63,414	2,197	2,162	4,359	67,773	
1984	74,629	3,154	48,794	6,832	55,626	1,635	1,711	3,346	58,972	
1983	45,776	3,490	31,022	3,815	34,837	936	730	1,666	36,503	
1982	31,960	4,439	32,342	3,996	36,338	1,563	1,139	2,702	39,040	
1981	24,750	3,272	26,934	2,416	29,350	1,352	1,057	2,409	31,759	
1980	19,344	2,941	15,132	1,962	17,094	1,294	466	1,760	18,854	
1979	26,651	2,196	22,390	3,210	25,600	1,722	492	2,214	27,814	
OLDER	158,061	10,200	120,892	10,493	131,385	6,968	968	7,936	139,321	
TOTAL	9,582,362	245,570	3,732,521	982,041	4,714,562	88,224	178,849	266,873	4,981,435	

PROGRAM: AGEPERKD
 WRITTEN BY: JOEY GESTRICK

TEXAS DEPARTMENT OF TRANSPORTATION
 AGE COUNTS BY COUNTY USING GROSS WEIGHT

RUN DATE 01/19/08
 PAGE 255

GRAND TOTALS

YEAR MODEL	PASSENGER	MOTOR- CYCLES	TRUCKS <=6000	TRUCKS >6000 <=8500	TOTAL TRUCKS <=8500	GAS TRUCKS >8500	DIESEL TRUCKS >8500	TOTAL TRUCKS >8500	TOTAL ALL TRUCKS
2005	195,025	8,391	25,230	17,550	42,780	2,736	9,129	11,864	54,644
2004	733,538	31,662	227,942	177,521	405,463	4,405	26,648	31,053	436,516
2003	754,648	38,079	280,472	147,663	428,135	4,878	21,645	26,523	454,658
2002	793,258	32,222	321,300	183,919	505,219	4,647	17,282	21,929	427,148
2001	787,135	26,235	317,559	124,315	441,874	6,370	19,023	25,393	467,267
2000	806,287	20,468	274,460	85,294	359,754	6,852	17,088	23,940	383,694
1999	714,186	16,141	242,292	97,950	340,242	6,562	16,752	23,314	363,556
1998	634,074	12,125	235,442	40,351	275,793	4,375	9,441	13,816	289,609
1997	598,865	9,416	242,760	57,159	299,919	5,253	9,068	14,321	314,240
1996	533,960	8,718	180,952	39,714	220,666	3,200	6,870	10,070	230,736
1995	566,299	7,175	200,999	37,882	238,881	7,044	6,125	13,169	251,850
1994	452,013	5,799	193,314	24,817	218,131	2,854	6,059	8,913	227,044
1993	396,027	4,814	139,103	22,505	161,608	2,312	5,329	7,641	169,249
1992	326,316	3,342	109,252	16,222	125,474	1,880	3,661	5,541	131,015
1991	280,589	2,398	95,581	12,034	107,615	1,910	4,223	6,133	113,748
1990	232,098	2,311	82,553	9,553	92,106	1,861	3,950	5,811	97,917
1989	189,919	2,426	80,511	9,726	90,237	1,598	3,283	4,881	95,118
1988	143,879	2,235	66,543	7,586	74,129	1,841	2,440	4,281	78,410
1987	105,583	2,321	46,592	4,067	50,659	1,398	2,039	3,438	54,097
1986	87,373	3,964	53,864	6,653	60,517	1,949	1,858	3,807	64,324
1985	77,014	3,912	48,383	6,228	54,611	1,968	1,896	3,864	58,475
1984	59,063	2,922	41,781	5,538	47,319	1,450	1,538	2,988	50,307
1983	36,397	3,198	28,409	3,333	31,742	816	631	1,447	31,194
1982	25,438	4,194	27,535	3,407	30,942	1,356	974	2,330	33,272
1981	19,808	3,014	23,196	2,106	25,302	1,162	939	2,101	27,403
1980	15,658	2,737	12,903	1,749	14,652	1,113	418	1,531	16,183
OLDER	162,447	11,634	125,505	11,918	137,423	7,344	1,239	8,583	146,006
TOTAL	9,726,895	271,853	3,723,033	1,096,153	4,819,186	89,135	199,547	288,682	5,107,868

PROGRAM: AGEPERKD TEXAS DEPARTMENT OF TRANSPORTATION RUN DATE 01/10/06
 WRITTEN BY: JOEY GEBTRICK AGE COUNTS BY COUNTY USING GROSS WEIGHT PAGE 255

GRAND TOTALS

YEAR	PASSENGER	MOTOR-CYCLES	TRUCKS <=6000	TRUCKS >6000 <=8500	TOTAL TRUCKS <=8500	GAS TRUCKS >8500	DIESEL TRUCKS >8500	TOTAL TRUCKS >8500	TOTAL ALL TRUCKS
2006	204,038	10,408	34,417	27,379	61,796	2,698	9,574	12,272	74,068
2005	795,581	42,801	205,575	130,166	335,741	7,320	37,583	44,903	380,644
2004	748,823	31,581	222,675	173,149	395,824	4,850	23,421	30,271	426,095
2003	747,729	37,299	272,256	141,905	414,161	5,026	20,568	25,594	439,755
2002	783,003	31,198	307,215	116,471	423,686	4,634	16,246	20,880	444,566
2001	762,968	25,474	303,368	116,251	419,619	6,184	17,968	24,152	443,771
2000	779,277	20,015	263,440	80,147	343,587	6,613	16,418	23,031	366,618
1999	689,229	15,902	232,425	91,410	323,835	6,277	16,067	22,344	346,179
1998	606,116	11,683	225,891	38,183	264,074	4,168	9,090	13,258	277,332
1997	567,616	9,187	231,589	54,055	285,644	5,024	8,637	13,661	299,305
1996	496,574	8,560	170,774	37,250	208,024	3,028	6,712	9,740	217,764
1995	516,473	6,954	182,133	35,126	217,259	6,430	5,869	12,299	229,558
1994	405,245	5,627	172,983	22,977	195,960	2,606	5,748	8,354	204,314
1993	348,915	4,610	124,053	20,625	144,678	2,133	5,079	7,212	151,890
1992	282,698	3,286	96,899	14,690	111,589	1,756	3,503	5,259	116,948
1991	238,068	2,322	84,525	10,776	95,301	1,742	3,981	5,723	101,024
1990	193,108	2,230	73,034	8,475	81,509	1,703	3,737	5,440	86,949
1989	154,713	2,382	70,407	8,850	79,257	1,450	3,099	4,549	83,806
1988	115,130	2,182	57,791	6,540	64,331	1,634	2,291	3,925	68,256
1987	83,976	2,289	39,797	3,447	43,244	1,231	1,872	3,103	46,347
1986	68,969	3,846	46,002	5,617	51,619	1,719	1,686	3,405	55,024
1985	61,187	3,790	41,175	5,296	46,471	1,726	1,759	3,485	49,956
1984	47,167	2,843	35,779	4,688	40,467	1,238	1,336	2,574	43,041
1983	29,292	3,040	22,807	2,784	25,591	730	564	1,294	26,885
1982	20,568	4,042	23,681	2,856	26,537	1,191	890	2,081	28,618
1981	16,249	2,950	19,684	1,774	21,458	973	840	1,813	23,271
OLDER	157,396	13,873	119,478	11,578	131,056	7,228	1,465	8,693	139,749
TOTAL	9,922,108	310,374	3,679,953	1,172,265	4,852,218	91,312	228,003	319,315	5,171,533

PROGRAM: AGEPERKD
 WRITTEN BY: JOEY OESTRICK

TEXAS DEPARTMENT OF TRANSPORTATION
 AGE COUNTS BY COUNTY USING GROSS WEIGHT

RUN DATE 01/16/07
 PAGE 255

GRAND TOTALS

YEAR	PASSENGER	MOTOR- CYCLES	TRUCKS <=6000	TRUCKS >6000	TOTAL TRUCKS <=8500	GAS TRUCKS >8500	DIESEL TRUCKS >8500	TOTAL TRUCKS >8500	TOTAL ALL TRUCKS
2007	260,889	10,099	39,390	47,243	86,633	1,900	10,926	12,826	99,459
2006	801,781	48,702	193,985	136,923	330,908	8,278	36,539	44,817	375,725
2005	833,241	41,305	204,646	130,866	335,512	6,990	36,694	43,684	379,196
2004	761,228	30,198	223,278	172,255	395,533	5,165	24,769	29,934	425,467
2003	761,989	35,834	268,986	138,240	407,226	5,139	19,873	25,012	432,238
2002	784,863	30,000	302,180	112,921	415,101	4,622	15,681	20,303	435,404
2001	758,546	24,251	299,066	112,563	411,629	6,025	17,622	23,647	435,276
2000	776,513	18,995	260,720	77,979	338,699	6,401	16,294	22,695	361,394
1999	682,535	15,110	229,582	88,472	318,054	6,079	15,591	21,670	339,724
1998	599,507	11,188	222,745	37,370	260,115	3,945	8,886	12,831	272,946
1997	549,746	8,770	225,704	52,370	278,074	4,827	8,418	13,245	291,319
1996	455,893	8,154	158,857	35,651	194,508	2,873	6,514	9,387	203,895
1995	487,541	6,578	167,256	33,137	200,393	6,009	5,718	11,727	212,120
1994	362,378	5,300	158,665	21,267	179,932	2,466	5,487	7,953	187,885
1993	307,317	4,352	113,357	18,969	132,326	1,992	4,763	6,755	139,081
1992	246,376	3,032	88,363	13,510	101,873	1,598	3,322	4,920	106,793
1991	204,688	2,215	76,501	9,866	86,367	1,595	3,713	5,308	91,675
1990	165,656	2,145	67,112	7,775	74,887	1,595	3,549	5,144	80,031
1989	130,023	2,225	64,337	7,885	72,222	1,390	2,900	4,290	76,512
1988	95,813	2,059	52,442	5,969	58,411	1,490	2,123	3,613	62,024
1987	69,927	2,146	35,689	3,041	38,730	1,118	1,759	2,877	41,607
1986	57,164	3,642	41,312	4,877	46,189	1,562	1,518	3,080	49,269
1985	50,286	3,498	36,346	4,609	40,955	1,562	1,509	3,071	44,026
1984	39,344	2,720	31,651	4,091	35,742	1,124	1,170	2,294	38,036
1983	24,445	2,836	20,258	2,467	22,725	591	482	1,073	23,798
1982	17,536	3,661	20,732	2,485	23,217	1,051	768	1,819	25,036
OLDER	158,670	15,789	125,617	11,751	137,368	7,115	1,945	9,060	146,428
TOTAL	10,423,895	344,804	3,728,777	1,294,552	5,023,329	94,502	258,533	353,035	5,376,364

PROGRAM: AGEFERND
 WRITTEN BY: JOEY OBSTRICK

TEXAS DEPARTMENT OF TRANSPORTATION
 AGE COUNTS BY COUNTY USING GROSS WEIGHT

ROM DATE 07/18/08
 PAGE 255

GRAND TOTALS

YEAR MODEL	PASSENGER	MOTOR- CYCLES	TRUCKS <=6000	TRUCKS >6000 <=8500	TOTAL TRUCKS <=8500	GAS TRUCKS >8500	DIESEL TRUCKS >8500	TOTAL TRUCKS >8500	TOTAL ALL TRUCKS
2009	4,121	1	23	0	23	0	53	61	84
2008	443,522	13,828	62,708	81,566	144,274	9,233	27,240	36,473	180,747
2007	893,487	49,942	169,673	207,103	376,776	7,249	34,633	42,082	418,858
2006	839,854	48,083	192,689	140,054	332,743	8,177	36,566	44,743	377,486
2005	836,362	37,919	200,330	129,316	329,646	6,993	34,844	41,837	371,483
2004	771,443	27,437	219,052	168,550	387,602	5,227	23,594	28,821	416,423
2003	760,266	32,686	265,646	133,870	399,516	5,231	19,647	24,078	423,594
2002	774,838	27,132	295,186	110,243	405,429	4,836	14,994	19,830	425,259
2001	742,461	21,767	290,867	108,444	399,311	5,481	16,599	22,080	421,391
2000	752,430	17,108	254,702	74,367	329,069	5,774	12,452	18,226	347,295
1999	653,926	13,575	221,246	83,320	304,566	4,843	10,759	15,602	320,168
1998	557,077	10,147	210,223	35,247	245,470	3,405	5,846	9,251	254,721
1997	481,731	7,828	196,847	47,853	244,700	3,831	5,586	9,417	254,117
1996	388,505	7,199	140,026	32,082	172,108	2,086	4,072	6,158	178,266
1995	390,817	5,918	146,860	29,858	176,718	4,225	3,929	8,154	184,872
1994	296,058	4,661	140,107	18,773	158,880	1,951	3,592	5,543	164,423
1993	245,222	3,827	97,788	16,242	114,030	1,534	2,977	4,511	118,541
1992	195,020	2,657	76,414	11,527	87,941	1,226	2,097	3,323	91,264
1991	153,887	1,844	44,442	8,444	52,886	1,188	2,114	3,302	77,442
1990	127,176	1,861	58,249	6,722	64,971	1,087	2,181	3,268	68,239
1989	98,177	1,965	55,134	6,683	61,817	1,010	1,799	2,809	64,626
1988	71,207	1,837	43,997	4,896	48,893	1,016	1,381	2,397	51,290
1987	51,986	1,868	29,233	2,458	31,691	644	1,061	1,705	33,396
1986	42,530	3,035	14,394	4,025	18,419	942	957	1,899	40,318
1985	37,887	2,925	29,717	3,739	33,456	903	870	1,773	35,229
1984	28,986	2,328	25,850	3,241	29,091	770	721	1,491	30,582
OLDER	169,800	18,641	139,245	13,580	152,825	5,945	1,766	7,711	160,536
TOTAL	10,815,446	368,115	3,662,368	1,482,203	5,144,571	94,807	271,732	366,539	5,511,110

PROGRAM: AGEFERKD
 WRITTEN BY: JOEY OESTRICK

TEXAS DEPARTMENT OF TRANSPORTATION
 AGE COUNTS BY COUNTY USING GROSS WEIGHT

RUN DATE 03/30/09
 PAGE 255

GRAND TOTALS

YEAR MODEL	PASSENGER	MOTOR- CYCLES	TRUCKS <=6000	TRUCKS >6000	TOTAL TRUCKS <=8500	GAS TRUCKS >8500	DIESEL TRUCKS >8500	TOTAL TRUCKS >8500	TOTAL ALL TRUCKS
2009	194,889	8,881	8,689	7,029	15,718	997	2,157	3,154	18,872
2008	825,223	45,478	143,575	186,544	330,119	14,251	43,252	57,503	387,622
2007	917,470	57,891	169,520	206,852	376,372	7,376	34,781	42,157	418,529
2006	851,220	49,332	193,112	139,044	332,156	8,453	36,055	44,508	375,664
2005	854,529	38,898	201,174	127,786	328,960	7,148	34,022	41,170	370,130
2004	771,134	28,436	217,160	163,505	380,665	5,295	22,997	28,292	408,957
2003	751,135	33,629	260,042	129,342	389,384	4,990	18,434	23,424	412,808
2002	760,095	28,054	289,021	106,062	395,083	4,614	14,658	19,272	414,355
2001	727,151	22,553	286,296	104,977	391,273	5,570	16,494	22,064	413,337
2000	735,779	17,956	249,177	72,618	321,795	5,912	15,414	21,326	343,121
1999	631,173	14,118	215,064	80,411	295,475	5,523	14,340	19,863	315,338
1998	518,974	10,431	193,628	33,248	226,876	3,741	8,066	11,807	238,683
1997	449,460	8,244	181,685	45,192	226,877	4,394	7,558	11,952	238,829
1996	357,721	7,466	129,805	30,261	160,066	2,536	5,753	8,289	168,355
1995	354,356	6,199	135,370	27,573	162,943	4,988	4,997	9,985	172,928
1994	265,700	4,821	128,728	17,216	145,944	2,062	4,601	6,663	152,607
1993	217,119	3,961	90,440	14,919	105,359	1,568	3,946	5,514	110,873
1992	171,302	2,830	70,029	10,524	80,553	1,287	2,702	3,989	84,542
1991	138,994	2,874	62,840	7,629	70,469	1,170	3,088	4,258	75,727
1990	109,307	1,930	53,323	6,010	59,333	1,272	2,843	4,115	63,448
1989	83,926	1,995	50,246	5,944	56,190	1,047	2,335	3,382	59,572
1988	60,716	1,922	39,885	4,392	44,277	1,132	1,682	2,814	47,091
1987	44,920	1,929	26,626	2,164	28,790	847	1,364	2,211	31,001
1986	36,579	3,284	30,733	3,421	34,154	1,210	1,104	2,314	36,468
1985	32,848	3,011	26,629	3,262	29,891	1,165	1,136	2,301	32,192
1984	26,100	2,439	23,186	2,798	25,984	634	813	1,447	27,431
OLDER	158,647	19,916	126,760	11,923	138,683	6,351	2,272	8,623	147,304
TOTAL	11,046,464	427,678	3,800,851	1,549,645	5,350,496	105,893	306,865	412,758	5,563,254

PROGRAM: AGEPERKD
 WRITTEN BY: JOEY OESTRICK

TEXAS DEPARTMENT OF MOTOR VEHICLES
 AGE COUNTS BY COUNTY USING GROSS WEIGHT

RUN DATE 04/12/10
 PAGE 255

GRAND TOTALS

YEAR MODEL	PASSENGER	MOTOR- CYCLES	TRUCKS <=6000	TRUCKS >6000	TOTAL TRUCKS <=8500	GAS TRUCKS >8500	DIESEL TRUCKS >8500	TOTAL TRUCKS >8500	TOTAL ALL TRUCKS
2009	576,194	30,325	70,120	98,016	168,136	5,022	14,853	19,875	188,011
2008	878,645	43,257	146,841	188,631	335,472	13,992	44,587	58,579	394,051
2007	933,993	52,793	170,748	207,030	377,778	7,634	34,374	42,008	419,786
2006	874,387	45,309	193,229	137,753	330,982	8,575	35,323	43,898	374,880
2005	856,977	36,242	199,625	126,659	326,284	7,178	32,925	40,103	366,387
2004	766,640	26,494	215,268	160,926	376,194	5,313	22,342	27,655	403,849
2003	743,328	31,506	255,959	126,555	382,514	4,673	17,687	22,360	404,874
2002	747,968	25,991	284,330	104,119	388,449	4,487	14,147	18,634	407,083
2001	707,123	20,990	280,305	102,327	382,632	5,333	15,764	21,097	403,729
2000	706,076	16,604	241,626	70,351	311,977	5,559	14,594	20,153	332,130
1999	590,052	13,130	202,826	75,993	278,819	5,275	13,227	18,502	297,321
1998	478,150	9,686	180,605	31,311	211,916	3,553	7,455	11,008	222,924
1997	411,284	7,597	169,576	62,801	232,377	4,134	6,896	11,030	223,407
1996	320,595	6,927	121,162	28,444	149,606	2,317	5,157	7,474	157,080
1995	311,063	5,584	125,166	25,467	150,633	4,501	4,442	8,943	159,576
1994	229,061	4,462	118,967	15,888	134,855	1,835	4,083	5,918	140,773
1993	183,349	3,579	82,395	13,541	95,936	1,398	3,426	4,824	100,760
1992	142,574	2,560	63,535	9,456	72,991	1,121	2,373	3,494	76,485
1991	314,071	1,856	84,822	6,764	91,586	1,134	2,716	3,850	95,436
1990	88,707	1,773	47,709	5,323	53,032	1,098	2,463	3,561	56,593
1989	67,788	1,830	44,428	5,160	49,588	907	2,067	2,974	52,562
1988	49,302	1,698	35,061	3,783	38,844	952	1,470	2,422	41,266
1987	36,714	1,715	23,243	1,899	25,142	688	1,143	1,831	26,973
1986	30,115	2,815	27,084	2,953	30,037	1,040	949	1,989	32,026
1985	27,444	2,675	23,431	2,903	26,334	861	904	1,765	28,099
1984	22,185	2,114	20,463	2,526	22,989	669	646	1,315	24,304
1983	14,137	2,089	13,353	1,477	14,830	374	274	648	15,478
1982	10,501	2,770	13,720	1,525	15,245	591	471	1,062	16,307
1981	8,900	2,054	11,576	979	12,555	502	469	951	13,506
1980	7,480	1,876	6,211	707	6,918	475	170	645	7,563
OLDER	104,613	8,754	69,417	5,795	75,212	3,294	474	3,768	78,980
TOTAL	11,039,416	417,257	3,512,501	1,607,062	5,119,563	104,475	307,850	412,325	5,531,888

PROGRAM: AGEPERNN
 WRITTEN BY: JOEY OESTRICK

TEXAS DEPARTMENT OF MOTOR VEHICLES
 AGE COUNTS BY COUNTY USING GROSS WEIGHT

RUN DATE 01/14/11
 PAGE 255

GRAND TOTALS

YEAR MODEL	PASSENGER	MOTOR- CYCLES	TRUCKS ≤6000	TRUCKS >6000	TOTAL TRUCKS ≤8500	GAS TRUCKS >8500	DIESEL TRUCKS >8500	TOTAL TRUCKS >8500	TOTAL ALL TRUCKS
2010	642,429	13,334	69,415	132,719	202,134	4,400	17,002	21,402	223,536
2009	603,129	37,383	71,522	104,362	175,884	5,643	15,790	21,433	197,317
2008	889,536	40,810	146,610	187,213	333,823	14,083	43,056	57,139	390,962
2007	951,505	49,462	170,032	203,435	373,467	7,822	33,544	41,366	414,833
2006	870,032	42,663	190,660	135,020	325,680	8,647	34,310	42,957	368,637
2005	847,173	34,237	196,924	123,799	320,723	7,098	31,976	39,074	359,797
2004	757,894	25,283	212,108	157,476	369,584	5,346	21,404	26,750	396,334
2003	731,835	29,736	251,998	123,584	375,582	4,503	17,182	21,685	397,267
2002	728,137	24,684	277,134	101,865	378,999	4,432	13,666	18,098	397,097
2001	678,407	19,751	271,979	99,241	371,220	5,121	15,109	20,230	391,450
2000	662,355	15,463	229,182	67,406	296,588	5,247	13,901	19,148	315,736
1999	548,026	12,280	191,871	72,365	264,236	4,939	12,452	17,391	281,627
1998	440,031	9,141	170,959	29,818	200,777	3,330	7,045	10,375	211,152
1997	372,367	7,153	160,436	40,572	201,008	3,877	6,508	10,385	211,393
1996	284,163	6,371	114,041	26,982	141,023	2,219	4,828	7,046	148,069
1995	271,027	5,130	117,635	23,867	141,502	4,084	4,072	8,156	149,658
1994	195,948	4,080	110,983	14,881	125,864	1,682	3,632	5,314	130,948
1993	154,556	3,363	75,874	12,449	88,323	1,299	3,075	4,374	92,697
1992	118,655	2,401	58,296	8,702	66,998	1,010	2,153	3,163	70,161
1991	94,469	1,680	49,198	6,213	55,411	1,010	2,441	3,451	58,862
1990	72,810	1,623	43,175	4,776	47,951	1,006	2,217	3,223	51,174
1989	55,505	1,760	40,060	4,685	44,745	807	1,826	2,633	47,378
1988	40,256	1,542	31,193	3,402	34,595	851	1,295	2,146	36,741
1987	30,579	1,525	20,664	1,715	22,379	588	992	1,580	23,959
1986	25,139	2,568	23,815	2,669	26,484	836	835	1,671	28,155
1985	23,375	2,325	20,789	2,539	23,328	699	785	1,484	24,812
1984	19,240	1,886	18,492	2,227	20,719	557	552	1,109	21,828
1983	12,288	1,886	12,020	1,296	13,316	328	261	589	13,905
1982	9,117	2,456	12,323	1,374	13,697	511	404	915	14,612
1981	7,910	1,828	10,318	865	11,183	438	363	801	11,984
OLDER	104,396	9,702	69,149	5,927	75,076	3,199	537	3,736	78,812
TOTAL	11,242,289	413,524	3,438,825	1,703,244	5,142,069	105,611	313,213	418,824	5,560,893

PROGRAM: AGEPERKN
 WRITTEN BY: KATHY SMITH

TEXAS DEPARTMENT OF MOTOR VEHICLES
 AGE COUNTS BY COUNTY USING GROSS WEIGHT

RUN DATE 01/30/12
 PAGE 255

GRAND TOTALS

YEAR MODEL	PASSENGER	MOTOR- CYCLES	TRUCKS <=6000	TRUCKS >6000 <=8500	TOTAL TRUCKS <=8500	GAS TRUCKS >8500	DIESEL TRUCKS >8500	TOTAL TRUCKS >8500	TOTAL ALL TRUCKS
2011	689,570	18,346	71,275	154,866	226,141	11,064	44,903	55,967	282,108
2010	671,785	15,872	71,912	136,062	207,974	4,632	16,515	21,147	229,121
2009	600,869	39,194	70,576	103,313	173,889	5,662	15,285	20,947	194,836
2008	904,099	39,546	144,882	183,176	328,058	13,721	40,918	54,639	382,697
2007	939,945	47,549	166,869	197,100	363,969	7,823	32,378	40,201	404,170
2006	853,870	41,112	186,176	130,882	317,058	7,937	33,116	41,053	358,111
2005	829,871	33,089	192,203	120,335	312,538	6,948	30,261	37,209	349,747
2004	739,430	24,406	206,771	152,637	359,408	5,301	20,489	25,790	385,198
2003	706,965	28,958	242,886	119,050	361,936	4,380	16,330	20,710	382,646
2002	694,309	23,875	265,267	98,349	363,616	3,876	13,091	16,967	380,583
2001	633,641	18,896	256,582	94,843	351,425	4,860	14,359	19,219	370,644
2000	610,328	14,901	215,135	63,763	278,898	4,560	13,119	17,679	296,577
1999	499,077	11,811	179,845	67,723	247,568	4,404	11,743	16,147	263,715
1998	395,669	8,772	159,155	27,511	186,666	2,632	6,614	9,246	195,912
1997	329,158	6,872	149,385	37,644	187,029	2,895	6,050	8,945	195,974
1996	246,315	6,094	105,505	25,003	130,508	1,847	4,417	6,264	136,772
1995	230,672	5,018	107,841	21,761	129,602	3,537	3,813	7,350	136,952
1994	163,946	3,846	101,128	13,370	114,498	1,462	3,316	4,778	119,276
1993	147,438	2,440	69,822	11,060	80,882	1,145	2,820	3,965	82,844
1992	97,129	2,214	52,303	7,732	60,035	866	1,936	2,802	62,837
1991	76,541	1,607	43,783	5,441	49,224	925	2,156	3,081	52,305
1990	58,652	1,557	38,315	4,210	42,525	876	1,925	2,801	45,326
1989	45,089	1,601	35,066	4,057	39,123	698	1,549	2,237	41,360
1988	32,857	1,458	27,056	2,878	29,934	690	1,114	1,804	31,738
1987	25,344	1,474	17,899	1,416	19,315	497	876	1,373	20,688
1986	21,014	2,362	20,777	2,305	23,082	660	733	1,393	24,475
1985	19,648	2,186	18,080	2,186	20,266	550	675	1,225	21,491
1984	16,325	1,766	15,951	1,909	17,860	479	473	952	18,812
1983	10,485	1,763	10,468	1,111	11,579	276	214	490	12,069
1982	7,959	2,261	10,612	1,150	11,762	418	335	753	12,515
OLDER	104,820	11,066	71,002	5,877	76,879	3,120	761	3,881	80,760
TOTAL	11,382,617	422,612	3,323,534	1,798,720	5,122,254	108,731	342,294	451,025	5,573,279

PROGRAM: AGEPERKN
 WRITTEN BY: KATHY SMITH

TEXAS DEPARTMENT OF MOTOR VEHICLES
 AGE COUNTS BY COUNTY USING GROSS WEIGHT

RUN DATE 01/29/13
 PAGE 255

GRAND TOTALS

YEAR MODEL	PASSENGER	MOTOR- CYCLES	TRUCKS <=8000	TRUCKS >8000	TOTAL TRUCKS <=8000	GAS TRUCKS >8000	DIESEL TRUCKS >8000	TOTAL TRUCKS >8000	TOTAL ALL TRUCKS
2012	842,562	25,956	62,268	154,696	216,964	13,256	53,718	66,974	283,938
2011	731,927	19,942	75,664	161,997	237,661	11,955	45,263	57,218	294,879
2010	691,005	15,512	71,943	134,988	206,931	4,773	15,946	20,719	227,650
2009	607,222	37,327	69,967	102,009	171,976	5,877	14,612	20,489	192,465
2008	699,324	36,828	143,528	180,087	323,615	13,863	39,235	53,098	376,713
2007	927,592	44,991	164,925	191,681	356,606	7,714	31,393	39,107	395,713
2006	841,324	38,816	184,137	128,623	312,760	7,847	32,347	40,194	352,954
2005	814,367	31,688	189,103	118,336	307,439	6,945	29,314	36,259	343,698
2004	718,702	23,569	201,944	149,227	351,171	5,267	19,790	25,057	376,228
2003	681,186	27,706	235,571	115,758	351,329	4,322	15,843	20,165	371,494
2002	659,801	22,729	255,678	95,838	351,516	3,781	12,749	16,530	368,046
2001	593,609	17,962	245,966	91,911	337,877	4,662	13,897	18,559	356,436
2000	564,902	14,110	206,134	61,364	267,498	4,402	12,614	17,016	284,514
1999	455,222	11,159	171,512	64,431	235,943	4,160	11,221	15,381	251,324
1998	356,199	8,355	150,501	26,098	176,599	2,561	6,322	8,883	185,482
1997	291,451	6,419	140,425	35,472	175,897	2,728	5,799	8,527	184,424
1996	213,769	5,737	98,935	23,415	122,350	1,736	4,161	5,897	128,247
1995	196,566	4,702	100,510	20,243	120,753	3,268	3,683	6,951	127,704
1994	137,500	3,714	93,617	12,280	105,897	1,378	3,140	4,518	110,415
1993	105,284	2,963	62,752	10,293	73,045	1,055	2,632	3,687	76,732
1992	79,546	2,147	47,429	7,052	54,481	798	1,808	2,606	57,087
1991	62,999	1,814	39,382	4,947	44,329	824	2,043	2,867	47,196
1990	48,458	1,446	34,133	3,701	37,834	797	1,779	2,576	40,410
1989	37,320	1,538	31,187	3,404	34,791	639	1,383	2,022	36,813
1988	27,326	1,336	23,764	2,590	26,354	648	1,048	1,696	28,050
1987	21,591	1,297	15,862	1,289	17,151	453	802	1,255	18,406
1986	17,653	2,163	18,440	2,090	20,530	614	673	1,287	21,817
1985	16,837	1,994	15,989	1,938	17,927	495	635	1,130	19,057
1984	14,112	1,572	13,995	1,694	15,689	440	433	873	16,562
1983	9,891	1,631	9,227	1,045	10,272	245	199	444	10,716
OLDER	107,054	12,777	74,847	6,447	81,294	3,169	979	4,148	85,442
TOTAL	11,772,301	429,600	3,249,335	1,915,144	5,164,479	120,672	385,461	506,133	5,670,612

PROGRAM: AGEPERK
 WRITTEN BY: KATHY SMITH

TEXAS DEPARTMENT OF MOTOR VEHICLES
 AGE COUNTS BY COUNTY USING GROSS WEIGHT

RUN DATE 02/05/14
 PAGE 255

GRAND TOTALS

YEAR MODEL	PASSENGER	MOTOR- CYCLES	TRUCKS <=6000	TRUCKS >6000 <=8500	TOTAL TRUCKS <=8500	GAS TRUCKS >8500	DIESEL TRUCKS >8500	TOTAL TRUCKS >8500	TOTAL ALL TRUCKS
2013	965,328	26,060	62,136	174,800	236,936	19,024	32,668	51,692	288,628
2012	892,733	27,159	66,754	160,604	227,358	16,410	61,009	77,419	304,777
2011	743,060	17,993	74,786	159,591	234,377	12,041	43,158	55,199	289,576
2010	699,049	14,511	70,777	132,413	203,190	4,969	15,028	19,997	223,187
2009	601,640	34,142	68,488	99,866	168,354	3,860	13,984	17,844	186,198
2008	885,001	33,396	140,466	175,445	315,911	13,514	37,031	50,545	366,456
2007	909,577	41,396	161,113	185,190	346,303	7,455	30,357	37,812	384,115
2006	821,561	35,837	179,951	125,158	305,109	7,661	30,894	38,555	343,664
2005	786,918	29,273	182,784	115,062	297,846	6,768	27,933	34,701	332,547
2004	688,421	21,805	194,613	144,044	338,657	5,160	19,019	24,179	362,836
2003	646,376	25,779	226,314	111,322	337,636	4,265	15,250	19,515	357,151
2002	615,067	21,017	242,758	92,501	335,259	3,620	12,356	15,976	351,235
2001	545,196	16,543	233,634	87,935	321,569	4,533	13,314	17,847	339,416
2000	510,449	12,949	194,727	58,458	253,185	4,226	12,021	16,247	269,432
1999	405,315	10,304	159,980	60,599	220,579	3,957	10,570	14,527	235,106
1998	312,031	7,532	139,743	24,459	164,202	2,563	5,910	8,473	172,675
1997	251,957	5,907	129,839	33,119	162,957	2,660	5,460	8,120	171,077
1996	181,103	5,235	91,011	21,819	112,830	1,589	4,055	5,644	118,474
1995	163,871	4,271	61,784	18,874	80,658	3,000	3,470	6,470	87,128
1994	112,669	3,342	85,071	11,174	96,245	1,232	2,918	4,150	100,395
1993	85,668	2,700	56,723	9,231	65,954	973	2,370	3,343	69,297
1992	64,431	1,971	42,281	6,304	48,585	728	1,602	2,330	50,915
1991	51,137	1,343	34,689	4,425	39,114	740	1,863	2,603	41,717
1990	39,574	1,328	30,203	3,306	33,509	697	1,589	2,286	35,795
1989	30,723	1,428	27,322	3,173	30,495	550	1,281	1,831	32,326
1988	22,785	1,222	20,836	2,244	23,080	525	937	1,462	24,542
1987	18,416	1,179	13,961	1,148	15,109	385	696	1,081	16,190
1986	15,036	1,865	16,253	1,834	18,087	493	604	1,097	19,184
1985	14,479	1,790	14,271	1,690	15,961	452	570	1,022	16,983
1984	12,216	1,338	12,435	1,506	13,941	415	386	801	14,742
OLDER	108,930	12,952	76,150	6,710	82,860	3,025	979	4,004	86,864
TOTAL	12,200,407	423,587	3,141,853	2,033,703	5,175,556	139,492	409,284	548,776	5,724,332

Currently Registered Vehicles by Registration Class
For the Month of August 2018

FY 2018

REG CD:	Report 9522 REGIS CLASS:	VEHICLE COUNT	SUBSET EXEMPT	REG CD:	REGIS CLASS:	VEHICLE COUNT	SUBSET EXEMPT
1	5-YR RENTAL TRAILER	0	0	41	PRIVATEBUS-MORETHAN6000	15,058	158
2	5-YR TOKEN TRAILER	387	0	42	LOGLOADER	116	0
3	GOLF CART	255	0	43	FARM TRK-MORE THAN 1TON	6,434	1
4	ANTIQUE MOTORCYCLE	4,708	0	44	FORESTRY	555	0
5	ANTIQUE	73,705	8	45	LEGION OF VALOR	42	0
6	APPORTIONED	182,560	23	46	TOW TRK-LESS/EQL 1 TON	2,162	0
7	ATV	0	0	47	TOW TRK-MORE THAN 1 TON	8,292	0
8	CITY BUS-LESS/EQL. 6000	3	0	48	OFCL PASS LESS/EQL 6000	1,140	1
9	CMOH	8	0	49	OFCL TRUCK-LESS/EQL 1 TON	395	0
10	COMBINATION	83,619	12	50	OFCL PASS-MORETHAN 6000	20	0
11	DISASTER RELIEF	276	2	51	Z-5 YR APPORTIONED TRLR	29	0
12	DRIVER EDUCATION	0	0	52	ARMED RSRV-PASS LE 6000	4	0
13	DISABLED VETERAN	207,743	10	53	ARMED RSRV-PASS GT 6000	0	0
14	FERTILIZER	337	1	54	ARMED RSRV-TRK LE 1 TON	5	0
15	FARM TRK-LESS/EQL 1 TON	116,253	6	55	HON CONSUL-PASS LE 6000	69	0
16	FARM TRAILER	479,530	9	56	HON CONSUL-PASS GT 6000	2	0
19	MACHINERY	72,420	150	57	HON CONSUL-TRK LE 1 TON	0	0
20	MOPED	1,753	2	58	TX GUARD-PASS LE 6000	43	0
21	MOTOR BUS	2,550	7	59	TX GUARD-PASS GT 6000	1	0
22	MOTORCYCLE	354,023	8	60	TX GUARD-TRUCK LE 1 TON	26	0
23	OIL WELL PERMIT	5,803	1	61	COTTON TRK GT 1 TON	60	0
24	PARADE	0	0	62	FARM TRK TRACTOR > 1TON	5,200	0
25	PASSENGER-LESS/EQL 6000	14,500,384	13,467	64	ANNUAL PERMIT TRUCK	17	0
26	PASSENGER-MORETHAN 6000	111,195	577	65	FOREIGN ORGANIZATION	1	1
27	POW	415	0	66	5-YR HVY RENTAL TRAILER	1,633	0
28	PRIVATEBUS-LESS/EQL6000	619	11	67	OFCL MOTORCYCLE	1	0
29	PEARL HARBOR SURVIVOR	74	0	68	PEARL HARBOR SURVIVOR MC	0	0
30	PURPLE HEART	13,862	0	69	DISABLED VETERAN MC	1,501	0
31	SOIL CONSERVATION TRUCK	121	0	70	SEAS AG TRK <= 1 TON	2	0
32	SOIL CONSERVATION TRL	122	0	71	SEAS AG TRK > 1 TON	85	0
33	TOKEN TRAILER	216,684	13	72	SEAS AG FARM TRK <= 1 TON	1	0
34	TRACTOR	23	1	73	SEAS AG FARM TRK > 1 TON	77	0
35	TRUCK-LESS/EQL 1 TON	6,110,911	4,577	74	SEAS AG FRM TRKTRAC >1TON	109	0
36	TRUCK-MORE THAN 1 TON	228,923	147	75	SEAS AG COTTON TRK > 1TON	168	0
37	TRAILER	1,423,645	256	76	SEAS AG COMBINATION	1,305	1
38	TRAVEL TRAILER	214,313	7	77	DISASTER RELIEF TRL	373	39
39	EXEMPT-NOT FOR TITLE ONLY	302,556	302,412	79	PER DEALER	0	0
40	CITY BUS-MORE THAN 6000	56	0	80	PER DEALER MOTORCYCLE	0	0

Currently Registered Vehicles by Registration Class
For the Month of August 2018

FY 2018

REG CD:	Report 9522 REGIS CLASS:	VEHICLE COUNT	SUBSET EXEMPT	REG CD:	REGIS CLASS:	VEHICLE COUNT	SUBSET EXEMPT
81	EXEMPT MOPED	0	0	139	OFCL TRUCK-MORE THAN 1 TON	1	0
82	PURPLE HEART MC	142	0	140	AIR MEDAL	3,758	0
83	CMOH MC	0	0	141	AIR MEDAL MC	39	0
84	LEGION OF VALOR MC	2	0	142	DEFENSE SUPERIOR SERV MDL	166	0
85	FLYING CROSS MEDAL RECPNT	1,327	0	143	DEFENSE SUPER SERV MDL MC	2	0
86	FLY CRS MEDAL RECPNT MC	8	0	144	SURVIVING SPOUSE DV	3,149	1
87	SILVER STAR MEDAL	346	0	145	SURVIVING SPOUSE DV MC	2	0
88	SILVER STAR MEDAL MC	10	0	146	AIRMANS MDL	41	0
89	LEGION OF MERIT	2,709	0	147	AIRMANS MDL MC	0	0
90	LEGION OF MERIT MC	38	0	148	COAST GUARD MDL	1	0
91	ANNUAL PERMIT TRAILER	10,049	0	149	COAST GUARD MDL MC	0	0
92	ROV	0	0	150	DEFENSE MERIT SVC MDL	994	0
99	TITLE ONLY (NO REGIS)	3	0	151	DEFENSE MERIT SVC MDL MC	10	0
100	FLEET CITY BUS - L/E 6000	0	0	152	MERITORIOUS SVC MDL	6,575	0
101	FLEET CITY BUS > 6000	0	0	153	MERITORIOUS SVC MDL MC	117	0
102	FLEET COMBINATION	1,433	0	154	NAVY MARINE CORPS MDL	26	0
103	FLEET MOPED	0	0	155	NAVY MARINE CORPS MDL MC	0	0
104	FLEET MOTOR BUS	1	0	156	PRISONER OF WAR MDL	4	0
105	FLEET MOTORCYCLE	2	0	157	PRISONER OF WAR MDL MC	0	0
106	FLEET PASSENGER-L/E 6000	1,000	0	158	SOLDIER MDL	26	0
107	FLEET PASSENGER > 6000	459	0	159	SOLDIER MDL MC	0	0
108	FLEET PRIVATE BUS-L/E6000	0	0	160	ANTIQUE BUS	21	0
109	FLEET PRIVATE BUS > 6000	23	0	161	DIST FLY CROSS MDL VLR	9	0
110	FLEET TRUCK - L/E 1 TON	9,562	0	162	DIST FLY CROSS MDL VLR MC	2	0
111	FLEET TRUCK > 1 TON	1,939	0	163	ANTIQUE TRK - L/E 1 TON	23,533	6
112	FLEET FORESTRY	0	0	164	ANTIQUE TRK - > 1 TON	726	1
113	TOKEN TRAILER FLT	33,689	0	165	UTV	0	0
114	DISTING SERVICE MEDAL	117	0	166	GC - PACKAGE DELIVERY	0	0
115	DISTING SERVICE MEDAL MC	1	0		Total	24,865,982	321,917
116	BRONZE STAR MEDAL	7,007	1				
117	BRONZE STAR MEDAL MC	150	0				
118	FLEET TOKEN TRLR	736	0				
119	FLEET TRAILER	1,206	0				
138	ANTIQUE TRAILER	59	0				

Data is driven from 9522 August 2018 Cognos Report.

Currently Registered Vehicles by Registration Class
For the Month of August 2017

FY 2017

REG CD:	Report 9522 REGIS CLASS:	VEHICLE COUNT	SUBSET EXEMPT	REG CD:	REGIS CLASS:	VEHICLE COUNT	SUBSET EXEMPT
1	5-YR RENTAL TRAILER	0	0	41	PRIVATEBUS-MORETHAN6000	15,228	162
2	5-YR TOKEN TRAILER	250	0	42	LOGLOADER	101	0
3	GOLF CART	242	0	43	FARM TRK-MORE THAN 1TON	6,225	1
4	ANTIQUE MOTORCYCLE	8,230	1	44	FORESTRY	564	0
5	ANTIQUE	158,003	11	45	LEGION OF VALOR	44	0
6	APPORTIONED	168,942	31	46	TOW TRK-LESS/EQL 1 TON	2,342	0
7	ATV	0	0	47	TOW TRK-MORE THAN 1 TON	8,288	0
8	CITY BUS-LESS/EQL. 6000	1	0	48	OFCL PASS LESS/EQL 6000	1,200	1
9	CMOH	8	0	49	OFCL TRUCK-LESS/EQL 1 TON	397	0
10	COMBINATION	79,060	14	50	OFCL PASS-MORETHAN 6000	18	0
11	DISASTER RELIEF	288	3	51	Z-5 YR APPORTIONED TRLR	29	0
12	DRIVER EDUCATION	0	0	52	ARMED RSRV-PASS LE 6000	7	0
13	DISABLED VETERAN	190,230	7	53	ARMED RSRV-PASS GT 6000	0	0
14	FERTILIZER	444	0	54	ARMED RSRV-TRK LE 1 TON	3	0
15	FARM TRK-LESS/EQL 1 TON	118,918	7	55	HON CONSUL-PASS LE 6000	67	0
16	FARM TRAILER	477,549	7	56	HON CONSUL-PASS GT 6000	1	0
19	MACHINERY	73,105	138	57	HON CONSUL-TRK LE 1 TON	0	0
20	MOPED	1,748	0	58	TX GUARD-PASS LE 6000	31	0
21	MOTOR BUS	2,751	8	59	TX GUARD-PASS GT 6000	0	0
22	MOTORCYCLE	364,991	7	60	TX GUARD-TRUCK LE 1 TON	22	0
23	OIL WELL PERMIT	5,821	1	61	COTTON TRK GT 1 TON	52	0
24	PARADE	0	0	62	FARM TRK TRACTOR > 1TON	5,298	0
25	PASSENGER-LESS/EQL 6000	14,299,328	13,470	64	ANNUAL PERMIT TRUCK	1	0
26	PASSENGER-MORETHAN 6000	108,878	504	65	FOREIGN ORGANIZATION	1	1
27	POW	499	0	66	5-YR HVY RENTAL TRAILER	1,753	0
28	PRIVATEBUS-LESS/EQL6000	712	15	67	OFCL MOTORCYCLE	0	0
29	PEARL HARBOR SURVIVOR	90	0	68	PEARL HARBOR SURVIVOR MC	0	0
30	PURPLE HEART	14,894	0	69	DISABLED VETERAN MC	1,399	0
31	SOIL CONSERVATION TRUCK	139	0	70	SEAS AG TRK <= 1 TON	1	0
32	SOIL CONSERVATION TRL	128	0	71	SEAS AG TRK > 1 TON	129	0
33	TOKEN TRAILER	209,057	12	72	SEAS AG FARM TRK <= 1 TON	2	0
34	TRACTOR	32	1	73	SEAS AG FARM TRK > 1 TON	95	0
35	TRUCK-LESS/EQL. 1 TON	6,055,188	4,554	74	SEAS AG FRM TRKTRAC >1TON	149	0
36	TRUCK-MORE THAN 1 TON	216,055	134	75	SEAS AG COTTON TRK > 1TON	181	0
37	TRAILER	1,386,817	250	76	SEAS AG COMBINATION	1,481	1
38	TRAVEL TRAILER	198,420	8	77	DISASTER RELIEF TRL	388	38
39	EXEMPT-NOT FOR TITLE ONLY	282,289	282,149	79	PER DEALER	0	0
40	CITY BUS-MORE THAN 6000	74	0	80	PER DEALER MOTORCYCLE	0	0

Currently Registered Vehicles by Registration Class
For the Month of August 2017

FY 2017

REG CD:	Report 9522 REGIS CLASS:	VEHICLE COUNT	SUBSET EXEMPT	REG CD:	REGIS CLASS:	VEHICLE COUNT	SUBSET EXEMPT
81	EXEMPT MOPED	0	0	139	OFCL TRUCK-MORETHAN 1 TON	2	0
82	PURPLE HEART MC	162	0	140	AIR MEDAL	3,125	0
83	CMOH MC	0	0	141	AIR MEDAL MC	41	0
84	LEGION OF VALOR MC	2	0	142	DEFENSE SUPERIOR SERV MDL	150	0
85	FLYING CROSS MEDAL RECPT	1,264	0	143	DEFENSE SUPER SERV MDL MC	2	0
86	FLY CRS MEDAL RECPT MC	11	0	144	SURVIVING SPOUSE DV	2,508	1
87	SILVER STAR MEDAL	344	0	145	SURVIVING SPOUSE DV MC	1	0
88	SILVER STAR MEDAL MC	10	0	146	AIRMANS MDL	37	0
89	LEGION OF MERIT	2,612	0	147	AIRMANS MDL MC	0	0
90	LEGION OF MERIT MC	43	0	148	COAST GUARD MDL	1	0
91	ANNUAL PERMIT TRAILER	9,227	0	149	COAST GUARD MDL MC	0	0
92	ROV	0	0	150	DEFENSE MERIT SVC MDL	774	0
99	TITLE ONLY (NO REGIS)	3	0	151	DEFENSE MERIT SVC MDL MC	12	0
100	FLEET CITY BUS - L/E 6000	0	0	152	MERITORIOUS SVC MDL	4,957	0
101	FLEET CITY BUS > 6000	0	0	153	MERITORIOUS SVC MDL MC	107	0
102	FLEET COMBINATION	1,427	0	154	NAVY MARINE CORPS MDL	23	0
103	FLEET MOPED	0	0	155	NAVY MARINE CORPS MDL MC	0	0
104	FLEET MOTOR BUS	1	0	156	PRISONER OF WAR MDL	2	0
105	FLEET MOTORCYCLE	2	0	157	PRISONER OF WAR MDL MC	0	0
106	FLEET PASSENGER-L/E 6000	983	0	158	SOLDIER MDL	23	0
107	FLEET PASSENGER > 6000	462	0	159	SOLDIER MDL MC	1	0
108	FLEET PRIVATE BUS-L/E6000	0	0	160	ANTIQUE BUS	19	1
109	FLEET PRIVATE BUS > 6000	22	0	161	DIST FLY CROSS MDL VLR	0	0
110	FLEET TRUCK - L/E 1 TON	9,339	0	162	DIST FLY CROSS MDL VLR MC	0	0
111	FLEET TRUCK > 1 TON	1,071	0		Total	24,540,747	301,537
112	FLEET FORESTRY	0	0				
113	TOKEN TRAILER FLT	30,923	0				
114	DISTING SERVICE MEDAL	107	0				
115	DISTING SERVICE MEDAL MC	1	0				
116	BRONZE STAR MEDAL	6,589	0				
117	BRONZE STAR MEDAL MC	154	0				
118	FLEET TOKEN TRLR	670	0				
119	FLEET TRAILER	1,210	0				
138	ANTIQUE TRAILER	101	0				

Data is driven from 9522 August Cognos Report

Currently Registered Vehicles by Registration Class
For the Month of August 2016

FY 2016

REG CD:	RTS.REG.9522 REGIS CLASS:	VEHICLE COUNT	SUBSET EXEMPT	REG CD:	REGIS CLASS:	VEHICLE COUNT	SUBSET EXEMPT
1	5-YR RENTAL TRAILER	0	0	41	PRIVATEBUS-MORETHAN6000	15,032	149
2	5-YR TOKEN TRAILER	89	0	42	LOGLOADER	108	0
3	GOLF CART	208	0	43	FARM TRK-MORE THAN 1TON	8,145	1
4	ANTIQUE MOTORCYCLE	7,281	1	44	FORESTRY	625	0
5	ANTIQUE	140,748	9	45	LEGION OF VALOR	43	0
6	APPORTIONED	182,028	31	46	TOW TRK-LESS/EQL 1 TON	2,520	1
7	ATV	0	0	47	TOW TRK-MORE THAN 1 TON	8,138	0
8	CITY BUS-LESS/EQL 6000	0	0	48	OFCL PASS LESS/EQL 6000	1,271	1
9	CMOH	10	0	49	OFCL TRUCK-LESS/EQL 1 TON	392	0
10	COMBINATION	79,727	3	50	OFCL PASS-MORETHAN 6000	20	0
11	DISASTER RELIEF	287	5	51	Z-5 YR APPORTIONED TRLR	30	0
12	DRIVER EDUCATION	0	0	52	ARMED RSRV-PASS LE 6000	1	0
13	DISABLED VETERAN	173,564	9	53	ARMED RSRV-PASS GT 6000	0	0
14	FERTILIZER	458	0	54	ARMED RSRV-TRK LE 1 TON	1	0
15	FARM TRK-LESS/EQL 1 TON	118,858	4	55	HON CONSUL-PASS LE 6000	74	0
16	FARM TRAILER	480,881	6	56	HON CONSUL-PASS GT 6000	1	0
19	MACHINERY	75,895	118	57	HON CONSUL-TRK LE 1 TON	0	0
20	MOPED	1,881	0	58	TX GUARD-PASS LE 6000	14	0
21	MOTOR BUS	2,625	4	59	TX GUARD-PASS GT 6000	0	0
22	MOTORCYCLE	371,777	6	60	TX GUARD-TRUCK LE 1 TON	8	0
23	OIL WELL PERMIT	5,868	0	61	COTTON TRK GT 1 TON	54	0
24	PARADE	0	0	62	FARM TRK TRACTOR > 1TON	5,328	0
25	PASSENGER-LESS/EQL 6000	13,979,501	13,348	64	ANNUAL PERMIT TRUCK	0	0
26	PASSENGER-MORETHAN 6000	101,432	413	65	FOREIGN ORGANIZATION	1	1
27	POW	588	0	66	5-YR HVY RENTAL TRAILER	1,814	0
28	PRIVATEBUS-LESS/EQL6000	989	26	67	OFCL MOTORCYCLE	2	0
29	PEARL HARBOR SURVIVOR	119	0	68	PEARL HARBOR SURVIVOR MC	0	0
30	PURPLE HEART	15,579	0	69	DISABLED VETERAN MC	1,259	0
31	SOIL CONSERVATION TRUCK	133	0	70	SEAS AG TRK <= 1 TON	1	0
32	SOIL CONSERVATION TRL	125	0	71	SEAS AG TRK > 1 TON	154	0
33	TOKEN TRAILER	209,918	8	72	SEAS AG FARM TRK <= 1 TON	2	0
34	TRACTOR	49	1	73	SEAS AG FARM TRK > 1 TON	129	0
35	TRUCK-LESS/EQL 1 TON	5,990,813	4,448	74	SEAS AG FRM TRKTRAC >1TON	181	0
36	TRUCK-MORE THAN 1 TON	201,772	113	75	SEAS AG COTTON TRK > 1TON	151	0
37	TRAILER	1,387,197	235	76	SEAS AG COMBINATION	1,538	1
38	TRAVEL TRAILER	190,888	6	77	DISASTER RELIEF TRL	388	20
39	EXEMPT-NOT FOR TITLE ONLY	244,881	244,557	79	PER DEALER	0	0
40	CITY BUS-MORE THAN 6000	48	0	80	PER DEALER MOTORCYCLE	0	0

Currently Registered Vehicles by Registration Class
For the Month of August 2016

FY 2016

REG CD:	RTS.REG.9522 REGIS CLASS:	VEHICLE COUNT	SUBSET EXEMPT	REG CD:	REGIS CLASS:	VEHICLE COUNT	SUBSET EXEMPT
81	EXEMPT MOPED	0	0	115	DISTING SERVICE MEDAL MC	1	0
82	PURPLE HEART MC	178	0	116	BRONZE STAR MEDAL	5,849	0
83	CMOH MC	0	0	117	BRONZE STAR MEDAL MC	147	0
84	LEGION OF VALOR MC	2	0	118	FLEET TOKEN TRLR	811	0
85	FLYING CROSS MEDAL RECPNT	1,148	0	119	FLEET TRAILER	1,275	0
86	FLY CRS MEDAL RECPNT MC	15	0	138	ANTIQUE TRAILER	88	0
87	SILVER STAR MEDAL	339	0	139	OFCL TRUCK-MORETHAN 1 TON	3	0
88	SILVER STAR MEDAL MC	10	0	140	AIR MEDAL	2,081	0
89	LEGION OF MERIT	2,402	0	141	AIR MEDAL MC	35	0
90	LEGION OF MERIT MC	37	0	142	DEFENSE SUPERIOR SERV MDL	101	0
91	ANNUAL PERMIT TRAILER	8,808	0	143	DEFENSE SUPER SERV MDL MC	1	0
92	ROV	0	0	144	SURVIVING SPOUSE DV	1,887	1
99	TITLE ONLY (NO REGIS)	9	0	145	SURVIVING SPOUSE DV MC	3	0
100	FLEET CITY BUS - L/E 6000	0	0	146	AIRMANS MDL	21	0
101	FLEET CITY BUS > 6000	0	0	147	AIRMANS MDL MC	0	0
102	FLEET COMBINATION	848	0	148	COAST GUARD MDL	0	0
103	FLEET MOPED	0	0	149	COAST GUARD MDL MC	0	0
104	FLEET MOTOR BUS	0	0	150	DEFENSE MERIT SVC MDL	318	0
105	FLEET MOTORCYCLE	0	0	151	DEFENSE MERIT SVC MDL MC	8	0
106	FLEET PASSENGER-L/E 6000	898	0	152	MERITORIOUS SVC MDL	2,080	0
107	FLEET PASSENGER > 6000	47	0	153	MERITORIOUS SVC MDL MC	80	0
108	FLEET PRIVATE BUS-L/E6000	0	0	154	NAVY MARINE CORPS MDL	13	0
109	FLEET PRIVATE BUS > 6000	14	0	155	NAVY MARINE CORPS MDL MC	0	0
110	FLEET TRUCK - L/E 1 TON	9,580	0	156	PRISONER OF WAR MDL	2	0
111	FLEET TRUCK > 1 TON	492	0	157	PRISONER OF WAR MDL MC	0	0
112	FLEET FORESTRY	0	0	158	SOLDIER MDL	13	0
113	TOKEN TRAILER FLT	29,877	1	159	SOLDIER MDL MC	1	0
114	DISTING SERVICE MEDAL	93	0	160	ANTIQUE BUS	8	0

Run Date: 9/21/2016

Total: 24,038,055 263,525

RTS.R93.9523
FRD2

TEXAS DEPARTMENT OF MOTOR VEHICLES
REGISTRATION AND TITLE SYSTEM
CURRENTLY REGISTERED VEHICLES - STATWIDE TOTALS BY REGISTRATION CLASS

FY 2015 M446952A

CURRENT AS OF: 10/09/2015

REG CD:	REGIS CLASS:	VEHICLE COUNT:	EXEMPT VEH. COUNT:	REG CD:	REGIS CLASS:	VEHICLE COUNT:	EXEMPT VEH. COUNT:
001	** 5-YR RENTAL TRAILER	0		054	ARMED RSRV-TRK LE 1 TON	0	
002	5-YR TOKEN TRAILER	10		055	HON CONSUL-PASS LE 6000	72	
003	GOLF CART	221		056	HON CONSUL-PASS GT 6000	2	
004	ANTIQUE MOTORCYCLE	6,339		057	HON CONSUL-TRK LE 1 TON	1	
005	ANTIQUE	124,029		058	TX GUARD-PASS LE 6000	0	
006	APPORTIONED	162,362		059	TX GUARD-PASS GT 6000	0	
007	ATV	0		060	TX GUARD-TRUCK LE 1 TON	0	
008	CITY BUS-LESS/EQL. 6000	0		061	COTTON TRK GT 1 TON	108	
009	CMOH	9		062	FARM TRK TRACTOR > 1TON	5,324	
010	COMBINATION	86,032		064	ANNUAL PERMIT TRUCK	1	
011	DISASTER RELIEF	303		065	FOREIGN ORGANIZATION	20	
012	** DRIVER EDUCATION	0		066	5-YR HVY RENTAL TRAILER	1,849	
013	DISABLED VETERAN	156,313		067	OFCL MOTORCYCLE	3	
014	FERTILIZER	456		068	PEARL HARBOR SURVIVOR MC	0	
015	FARM TRK-LESS/EQL 1 TON	117,537		069	DISABLED VETERAN MC	1,123	
016	FARM TRAILER	474,740		070	SEAS AG TRK <= 1 TON	2	
019	MACHINERY	77,234		071	SEAS AG TRK > 1 TON	119	
020	MOPED	1,936		072	SEAS AG FARM TRK <= 1 TON	0	
021	MOTOR BUS	2,658		073	SEAS AG FARM TRK > 1 TON	83	
022	MOTORCYCLE	367,578		074	SEAS AG FRM TRKTRAC >1TON	139	
023	OIL WELL PERMIT	6,124		075	SEAS AG COTTON TRK > 1TON	331	
024	PARADE	0		076	SEAS AG COMBINATION	1,157	
025	PASSENGER-LESS/EQL 6000	13,288,425		077	DISASTER RELIEF TRL	362	
026	PASSENGER-MORETHAN 6000	94,506		079	** PER DEALER	0	
027	PON	693		080	** PER DEALER MOTORCYCLE	0	
028	PRIVATEBUS-LESS/EQL6000	1,470		081	EXEMPT MOPED	1	
029	PEARL HARBOR SURVIVOR	149		082	PURPLE HEART MC	200	
030	PURPLE HEART	16,049		083	CMOH MC	0	
031	SOIL CONSERVATION TRUCK	140		084	LEGION OF VALOR MC	2	
032	SOIL CONSERVATION TRL	142		085	FLYING CROSS MEDAL RCPMT	1,048	
033	TOKEN TRAILER	209,974		086	FLY CRS MEDAL RCPMT MC	17	
034	TRACTOR	38		087	SILVER STAR MEDAL	337	
035	TRUCK-LESS/EQL. 1 TON	5,780,988		088	SILVER STAR MEDAL MC	10	
036	TRUCK-MORE THAN 1 TON	184,462		089	LEGION OF MERIT	2,166	
037	TRAILER	1,300,088		090	LEGION OF MERIT MC	31	
038	TRAVEL TRAILER	181,063		091	ANNUAL PERMIT TRAILER	7,766	
039	EXEMPT-NOT FOR TITLE ONLY	287,891		092	ROV	0	
040	CITY BUS-MORE THAN 6000	50		099	TITLE ONLY (NO REGIS)	2	
041	PRIVATEBUS-MORETHAN6000	14,100		100	FLEET CITY BUS - L/E 6000	0	
042	LOGLOADER	98		101	FLEET CITY BUS > 6000	0	
043	FARM TRK-MORE THAN 1TON	5,899		102	FLEET COMBINATION	605	
044	FORESTRY	596		103	FLEET MOPED	0	
045	LEGION OF VALOR	47		104	FLEET MOTOR BUS	0	
046	TOM TRK-LESS/EQL. 1 TON	2,540		105	FLEET MOTORCYCLE	0	
047	TOM TRK-MORE THAN 1 TON	7,394		106	FLEET PASSENGER-L/E 6000	867	
048	OFCL PASS LESS/EQL 6000	1,349		107	FLEET PASSENGER > 6000	43	
049	OFCL TRUCK-LESS/EQL 1 TON	409		108	FLEET PRIVATE BUS-L/E6000	0	
050	OFCL PASS-MORETHAN 6000	19		109	FLEET PRIVATE BUS > 6000	2	
051	2-5 YR APPORTIONED TRLR	2		110	FLEET TRUCK - L/E 1 TON	9,458	
052	ARMED RSRV-PASS LE 6000	0		111	FLEET TRUCK > 1 TON	397	
053	ARMED RSRV-PASS GT 6000	0		112	FLEET FORESTRY	0	

** Note ** Counts do not include Plate-to-Owner Registration Classes. Example: Driver's Education.

RUNDATE 10/10/15
RUNTIME 07:54:22

PAGE 1
REPORT DATE 10/09/15

RTS.REG.9523
PRD2

TEXAS DEPARTMENT OF MOTOR VEHICLES
REGISTRATION AND TITLE SYSTEM
CURRENTLY REGISTERED VEHICLES - STATEWIDE TOTALS BY REGISTRATION CLASS

M446952A

CURRENT AS OF: 10/09/2015

REG CD:	REGIS CLASS:	VEHICLE COUNT:	EXEMPT VEH. COUNT:	REG CD:	REGIS CLASS:	VEHICLE COUNT:	EXEMPT VEH. COUNT:
113	TOKEN TRAILER FLT	29,346		139	OPCL TRUCK-MORETHAN 1 TON	2	
114	DISTING SERVICE MEDAL	73		140	AIR MEDAL	864	
115	DISTING SERVICE MEDAL MC	0		141	AIR MEDAL MC	25	
116	BRONZE STAR MEDAL	4,575		142	DEFENSE SUPERIOR SERV MDL	55	
117	BRONZE STAR MEDAL MC	124		143	DEFENSE SUPER SERV MDL MC	1	
118	FLEET TOKEN TRLR	426		144	SURVIVING SPOUSE DW	1,343	
119	FLEET TRAILER	1,135		145	SURVIVING SPOUSE DW MC	2	
138	ANTIQU TRAILER	76					

STATEWIDE VEHICLE TOTAL: 23,034,157

...END OF REPORT...

** Note ** Counts do not include Plate-to-Owner Registration Classes. Example: Driver's Education.

RUNDATE 10/10/15
RUNTIME 07:54:22

PAGE 2
REPORT DATE 10/09/15

RTS.REG.9523
PRD2

TEXAS DEPARTMENT OF MOTOR VEHICLES
REGISTRATION AND TITLE SYSTEM
CURRENTLY REGISTERED VEHICLES - STATEWIDE TOTALS BY REGISTRATION CLASS

CURRENT AS OF: 10/10/2014

REG CD:	REGIS CLASS:	VEHICLE COUNT:	EXEMPT VEH. COUNT:	REG CD:	REGIS CLASS:	VEHICLE COUNT:	EXEMPT VEH. COUNT:
001	** 5-YR RENTAL TRAILER	0		004	ARMED RSRV-TRK LE 1 TON	0	
002	5-YR TOKEN TRAILER	12,000		005	HON CONSUL-PASS LE 6000	71	
003	GOLF CART	348		006	HON CONSUL-PASS GT 6000	2	
004	ANTIQUE MOTORCYCLE	5,138		007	HON CONSUL-TRK LE 1 TON	3	
005	ANTIQUE	103,773		008	TX GUARD-PASS LE 6000	0	
006	APPORTIONED	182,567		009	TX GUARD-PASS GT 6000	0	
007	ATV	0		010	TX GUARD-TRUCK LE 1 TON	0	
008	CITY BUS-LESS/EQL. 6000	0		011	COTTON TRK GT 1 TON	87	
009	CMON	11		012	FARM TRK TRACTOR > 1TON	5,954	
010	COMBINATION	86,541		013	ANNUAL PERMIT TRUCK	25	
011	DISASTER RELIEF	294		014	FOREIGN ORGANIZATION	25	
012	** DRIVER EDUCATION	0		015	5-YR HVY RENTAL TRAILER	1,863	
013	DISABLED VETERAN	140,518		016	OFCL MOTORCYCLE	5	
014	FERTILIZER	562		017	PEARL HARBOR SURVIVOR MC	0	
015	FARM TRK-LESS/EQL 1 TON	138,687		018	DISABLED VETERAN MC	990	
016	FARM TRAILER	511,613		019	SEAS AG TRK <= 1 TON	0	
017	MACHINERY	80,830		020	SEAS AG TRK > 1 TON	126	
018	MOPED	2,641		021	SEAS AG FARM TRK <= 1 TON	1	
019	MOTOR BUS	2,723		022	SEAS AG FARM TRK > 1 TON	62	
020	MOTORCYCLE	431,542		023	SEAS AG FRM TRCTRAC >1TON	183	
021	OIL WELL PERMIT	6,277		024	SEAS AG COTTON TRK > 1TON	323	
022	PARADE	0		025	SEAS AG COMBINATION	1,106	
023	PASSENGER-LESS/EQL 6000	13,267,039		026	DISASTER RELIEF TEL	308	
024	PASSENGER-MORETHAN 6000	96,061		027	** FR DEALER	0	
025	POW	826		028	** FR DEALER MOTORCYCLE	0	
026	PRIVATEBUS-LESS/EQL6000	1,623		029	EXEMPT MOPED	1	
027	PEARL HARBOR SURVIVOR	175		030	PURPLE HEART MC	212	
028	PURPLE HEART	17,277		031	CMON MC	0	
029	SOIL CONSERVATION TRUCK	162		032	LEGION OF VALOR MC	3	
030	SOIL CONSERVATION TEL	153		033	FLYING CROSS MEDAL RECPT	1,014	
031	TOKEN TRAILER	207,809		034	FLY CRS MEDAL RECPT MC	17	
032	TRACTOR	43		035	SILVER STAR MEDAL	321	
033	TRUCK-LESS/EQL. 1 TON	5,918,921		036	SILVER STAR MEDAL MC	10	
034	TRUCK-MORE THAN 1 TON	179,581		037	LEGION OF MERIT	1,994	
035	TRAILER	1,366,710		038	LEGION OF MERIT MC	32	
036	TRAVEL TRAILER	216,414		039	ANNUAL PERMIT TRAILER	7,711	
037	EXEMPT-NOT FOR TITLE ONLY	528,277		040	RV	0	
038	CITY BUS-MORE THAN 6000	63		041	TITLE ONLY (NO REGIS)	5	
039	PRIVATEBUS-MORETHAN6000	14,454		100	FLEET CITY BUS - L/E 6000	0	
040	LOADER	119		101	FLEET CITY BUS > 6000	0	
041	FARM TRK-MORE THAN 1TON	7,311		102	FLEET COMBINATION	504	
042	FORESTRY	581		103	FLEET MOPED	0	
043	LEGION OF VALOR	50		104	FLEET MOTOR BUS	0	
044	TOW TRK-LESS/EQL. 1 TON	2,626		105	FLEET MOTORCYCLE	0	
045	TOW TRK-MORE THAN 1 TON	7,236		106	FLEET PASSENGER-L/E 6000	855	
046	OFCL PASS LESS/EQL 6000	1,421		107	FLEET PASSENGER > 6000	39	
047	OFCL TRUCK-LESS/EQL 1 TON	449		108	FLEET PRIVATE BUS-L/E6000	0	
048	OFCL PASS-MORETHAN 6000	17		109	FLEET PRIVATE BUS > 6000	2	
049	3-5 YR APPORTIONED TRK	0		110	FLEET TRUCK - L/E 1 TON	8,908	
050	ARMED RSRV-PASS LE 6000	0		111	FLEET TRUCK > 1 TON	365	
051	ARMED RSRV-PASS GT 6000	0		112	FLEET FORESTRY	0	

** Note ** Counts do not include Plate-to-Owner Registration Classes. Example: Driver's Education.

RUNDATE 10/11/14
RUNTIME 06:14:08

PAGE 1
REPORT DATE 10/10/14

FY 2014
2 OF 2 PAGES

RTS-REG.9523
PR02

TEXAS DEPARTMENT OF MOTOR VEHICLES
REGISTRATION AND TITLE SYSTEM
CURRENTLY REGISTERED VEHICLES - STATEWIDE TOTALS BY REGISTRATION CLASS

CURRENT AS OF: 10/10/2014

REG CD:	REGIS CLASS:	VEHICLE COUNT:	EXEMPT VEH. COUNT:	REG CD:	REGIS CLASS:	VEHICLE COUNT:	EXEMPT VEH. COUNT:
113	TOKEN TRAILER FLT	22,640		139	OPCL TRUCK-MORETHAN 1 TON	2	
114	DISTING SERVICE MEDAL	58		140	AIR MEDAL	352	
115	DISTING SERVICE MEDAL MC	0		141	AIR MEDAL MC	15	
116	BRONZE STAR MEDAL	3,599		142	DEFENSE SUPERIOR SERV MDL	32	
117	BRONZE STAR MEDAL MC	113		143	DEFENSE SUPER SERV MDL MC	0	
118	FLEET TOKEN TRLR	238		144	SURVIVING SPOUSE DV	806	
119	FLEET TRAILER	711		145	SURVIVING SPOUSE DV MC	2	
130	ANTIQUE TRAILER	61					

STATEWIDE VEHICLE TOTAL: 23,568,576

...END OF REPORT...

** Note ** Counts do not include Plate-to-Owner Registration Classes. Example: Driver's Education.

RUNDATE 10/11/14
RUNTIME 06:34.08

PAGE 2
REPORT DATE 10/10/14

RTS.REG.9522
PRD2

TEXAS DEPARTMENT OF MOTOR VEHICLES
REGISTRATION AND TITLE SYSTEM
CURRENTLY REGISTERED VEHICLES - STATEWIDE TOTALS BY REGISTRATION CLASS

CURRENT AS OF: 10/11/2013

REG CD:	REGIS CLASS:	VEHICLE COUNT:	EXEMPT VEH. COUNT:	REG CD:	REGIS CLASS:	VEHICLE COUNT:	EXEMPT VEH. COUNT:
001	** 5-YR RENTAL TRAILER	0	0	054	ARMED RESRV-TRK LE 1 TON	0	0
002	5-YR TOKEN TRAILER	12,532	1	055	HON CONSUL-PASS LE 6000	81	0
003	GOLF CART	368	0	056	HON CONSUL-PASS GT 6000	2	0
004	ANTIQUE MOTORCYCLE	3,998	1	057	HON CONSUL-TRK LE 1 TON	4	0
005	ANTIQUE	82,316	2	058	TX GUARD-PASS LE 6000	0	0
006	APPORTIONED	141,920	44	059	TX GUARD-PASS GT 6000	0	0
007	ATV	0	0	060	TX GUARD-TRUCK LE 1 TON	0	0
008	CITY BUS-LESS/EQL. 6000	1	0	061	COTTON TRK GT 1 TON	105	0
009	CMOH	9	0	062	FARM TRK TRACTOR > 1TON	6,003	1
010	COMBINATION	82,626	5	064	ANNUAL PERMIT TRUCK	12	0
011	DISASTER RELIEF	290	3	065	FOREIGN ORGANIZATION	30	29
012	** DRIVER EDUCATION	0	0	066	5-YR EVY RENTAL TRAILER	1,679	0
013	DISABLED VETERAN	121,455	13	067	OPCL MOTORCYCLE	5	0
014	FERTILIZER	566	0	068	PEARL HARBOR SURVIVOR MC	0	0
015	FARM TRK-LESS/EQL 1 TON	157,138	1	069	DISABLED VETERAN NC	773	0
016	FARM TRAILER	587,333	7	070	SEAS AG TRK <= 1 TON	2	0
019	MACHINERY	75,123	59	071	SEAS AG TRK > 1 TON	148	0
020	MOPED	2,940	0	072	SEAS AG FARM TRK <= 1 TON	3	0
021	MOTOR BUS	2,584	2	073	SEAS AG FARM TRK > 1 TON	95	0
022	MOTORCYCLE	434,362	27	074	SEAS AG FEM TRKTRAC >1TON	144	0
023	OIL WELL PERMIT	6,023	1	075	SEAS AG COTTON TRK > 1TON	392	0
024	PARADE	0	0	076	SEAS AG COMBINATION	1,141	0
025	PASSENGER-LESS/EQL 6000	12,818,065	13,478	077	DISASTER RELIEF TRL	278	5
026	PASSENGER-MORETHAN 6000	92,882	343	079	** PER DEALER	0	0
027	PCW	956	0	080	** PER DEALER MOTORCYCLE	0	0
028	PRIVATEBUS-LESS/EQL6000	1,718	43	081	EXEMPT MOPED	1	1
029	PEARL HARBOR SURVIVOR	212	0	082	PURPLE HEART MC	213	0
030	PURPLE HEART	17,777	0	083	CMOH MC	0	0
031	SOIL CONSERVATION TRUCK	175	0	084	LEGION OF VALOR MC	3	0
032	SOIL CONSERVATION TRL	171	1	085	FLYING CROSS MEDAL RCPNT	968	0
033	TOKEN TRAILER	200,949	11	086	FLY CRS MEDAL RCPNT MC	14	0
034	TRACTOR	27	0	087	SILVER STAR MEDAL	297	0
035	TRUCK-LESS/EQL. 1 TON	5,854,158	3,988	088	SILVER STAR MEDAL MC	11	0
036	TRUCK-MORE THAN 1 TON	166,325	77	089	LEGION OF MERIT	1,753	0
037	TRAILER	1,280,988	246	090	LEGION OF MERIT MC	33	0
038	TRAVEL TRAILER	210,681	3	091	ANNUAL PERMIT TRAILER	7,010	0
039	EXEMPT-NOT FOR TITLE ONLY	516,655	515,765	092	ROV	0	0
040	CITY BUS-MORE THAN 6000	67	0	099	TITLE ONLY (NO REGIS)	6	0
041	PRIVATEBUS-MORETHAN6000	14,023	81	100	FLEET CITY BUS - L/E 6000	0	0
042	LOGLOADER	122	0	101	FLEET CITY BUS > 6000	0	0
043	FARM TRK-MORE THAN 1TON	7,476	0	102	FLEET COMBINATION	250	0
044	FORESTRY	585	0	103	FLEET MOPED	0	0
045	LEGION OF VALOR	49	0	104	FLEET MOTOR BUS	0	0
046	TOW TRK-LESS/EQL. 1 TON	2,665	1	105	FLEET MOTORCYCLE	0	0
047	TOW TRK-MORE THAN 1 TON	7,073	0	106	FLEET PASSENGER-L/E 6000	839	0
048	OPCL PASS LESS/EQL 6000	1,435	1	107	FLEET PASSENGER > 6000	35	0
049	OPCL TRUCK-LESS/EQL 1 TON	499	0	108	FLEET PRIVATE BUS-L/E6000	0	0
050	OPCL PASS-MORETHAN 6000	14	0	109	FLEET PRIVATE BUS > 6000	1	0
051	2-5 YR APPORTIONED TRILR	0	0	110	FLEET TRUCK - L/E 1 TON	9,356	0
052	ARMED RESRV-PASS LE 6000	0	0	111	FLEET TRUCK > 1 TON	442	0
053	ARMED RESRV-PASS GT 6000	0	0	112	FLEET FORESTRY	0	0

** Note ** Counts do not include Plate-to-Owner Registration Classes. Example: Driver's Education.

RUNDATE 10/12/13
RUNTIME 09:45:11

PAGE 1
REPORT DATE 10/11/13

FY 2013
2 OF 2 PAGES

RTS.REG.9522
PRD2

TEXAS DEPARTMENT OF MOTOR VEHICLES
REGISTRATION AND TITLE SYSTEM
CURRENTLY REGISTERED VEHICLES - STATEWIDE TOTALS BY REGISTRATION CLASS

CURRENT AS OF: 10/11/2013

REG CD:	REGIS CLASS:	VEHICLE COUNT:	EXEMPT VEH. COUNT:	REG CD:	REGIS CLASS:	VEHICLE COUNT:	EXEMPT VEH. COUNT:
113	TOKEN TRAILER FLT	18,367	0	139	OPCL TRUCK-MORETHAN 1 TON	1	0
114	DISTING SERVICE MEDAL	39	0	140	AIR MEDAL	11	0
115	DISTING SERVICE MEDAL MC	0	0	141	AIR MEDAL MC	1	0
116	BRONZE STAR MEDAL	2,353	0	142	DEFENSE SUPERIOR SERV MDL	6	0
117	BRONZE STAR MEDAL MC	76	0	143	DEFENSE SUPER SERV MDL MC	0	0
118	FLEET TOKEN TRLR	96	0	144	SURVIVING SPOUSE DV	270	0
119	FLEET TRAILER	296	0	145	SURVIVING SPOUSE DV MC	0	0
138	ANTIQUE TRAILER	31	0				

STATEWIDE VEHICLE TOTAL: 22,961,773

STATEWIDE EXEMPT VEHICLE TOTAL: 534,240

...END OF REPORT...

** Note ** Counts do not include Plate-to-Owner Registration Classes. Example: Driver's Education.

RUNDATS 10/12/13
RUNTIME 08:45:11

PAGE 2
REPORT DATE 10/11/13

FY 2012
1 OF 2 PAGES

RTS REG.9523
PR02

TEXAS DEPARTMENT OF MOTOR VEHICLES
REGISTRATION AND TITLE SYSTEM
CURRENTLY REGISTERED VEHICLES - STATEWIDE TOTALS BY REGISTRATION CLASS

CURRENT AS OF: 10/12/2012

REG CD:	REGIS CLASS:	VEHICLE COUNT:	EXEMPT VEH. COUNT:	REG CD:	REGIS CLASS:	VEHICLE COUNT:	EXEMPT VEH. COUNT:
001	** 5-YR RENTAL TRAILER	0		054	ARMED RSRV-TRK LE 1 TON	0	
002	5-YR TOKEN TRAILER	13,400		055	NON CONSUL-PASS LE 6000	87	
003	GOLF CART	297		056	NON CONSUL-PASS GT 6000	2	
004	ANTIQUE MOTORCYCLE	5,882		057	NON CONSUL-TRK LE 1 TON	3	
005	ANTIQUE	108,889		058	TX GUARD-PASS LE 6000	0	
006	APPORTIONED	124,645		059	TX GUARD-PASS GT 6000	0	
007	RTV	0		060	TX GUARD-TRUCK LE 1 TON	121	
008	CITY BUS-LESS/EQL. 6000	1		061	COTTON TRK GT 1 TON	5,899	
009	CMOH	9		062	FARM TRK TRACTOR > 1TON	14	
010	COMBINATION	79,021		064	ANNUAL PERMIT TRUCK	26	
011	DISASTER RELIEF	264		065	FOREIGN ORGANIZATION	1,874	
012	** DRIVER EDUCATION	0		066	5-YR HVY RENTAL TRAILER	4	
013	DISABLED VETERAN	104,824		067	OPCL MOTORCYCLE	0	
014	FERTILIZER	632		068	PEARL HARBOR SURVIVOR MC	625	
015	FARM TRK-LESS/EQL 1 TON	165,736		069	DISABLED VETERAN MC	1	
016	FARM TRAILER	595,969		070	SEAS AG TRK <= 1 TON	153	
019	MACHINERY	67,550		071	SEAS AG TRK > 1 TON	3	
020	MOPED	3,228		072	SEAS AG FARM TRK <= 1 TON	103	
021	MOTOR BUS	2,544		073	SEAS AG FARM TRK > 1 TON	116	
022	MOTORCYCLE	433,147		074	SEAS AG FRM TRKTRAC >1TON	505	
023	OIL WELL PERMIT	5,721		075	SEAS AG COTTON TRK > 1TON	1,166	
024	PARADE	0		076	SEAS AG COMBINATION	241	
025	PASSENGER-LESS/EQL 6000	12,378,139		077	DISASTER RELIEF TRL	0	
026	PASSENGER-MORETHAN 6000	89,985		079	** PER DEALER	0	
027	POW	1,068		080	** PER DEALER MOTORCYCLE	1	
028	PRIVATEBUS-LESS/EQL6000	1,832		081	EXEMPT MOPED	207	
029	PEARL HARBOR SURVIVOR	250		082	PURPLE HEART MC	0	
030	PURPLE HEART	18,008		083	CMOH MC	3	
031	SOIL CONSERVATION TRUCK	178		084	LEGION OF VALOR MC	895	
032	SOIL CONSERVATION TRL	166		085	FLYING CROSS MEDAL RECPT	13	
033	TOKEN TRAILER	194,233		086	FLY CRS MEDAL RECPT MC	269	
034	TRACTOR	16		087	SILVER STAR MEDAL	12	
035	TRUCK-LESS/EQL. 1 TON	5,777,174		088	SILVER STAR MEDAL MC	1,481	
036	TRUCK-MORE THAN 1 TON	160,532		089	LEGION OF MERIT	33	
037	TRAILER	1,235,816		090	LEGION OF MERIT MC	6,595	
038	TRAVEL TRAILER	206,068		091	ANNUAL PERMIT TRAILER	0	
039	EXEMPT-NOT FOR TITLE ONLY	506,246		092	ROV	14	
040	CITY BUS-MORE THAN 6000	76		099	TITLE ONLY (NO REGIS)	0	
041	PRIVATEBUS-MORETHAN6000	13,566		100	FLEET CITY BUS - L/E 6000	0	
042	LOGLOADER	113		101	FLEET CITY BUS > 6000	15	
043	FARM TRK-MORE THAN 1TON	7,789		102	FLEET COMBINATION	0	
044	FORESTRY	546		103	FLEET MOPED	0	
045	LEGION OF VALOR	57		104	FLEET MOTOR BUS	0	
046	TON TRK-LESS/EQL. 1 TON	2,767		105	FLEET MOTORCYCLE	761	
047	TON TRK-MORE THAN 1 TON	6,932		106	FLEET PASSENGER-L/E 6000	23	
048	OPCL PASS LESS/EQL 6000	1,439		107	FLEET PASSENGER > 6000	0	
049	OPCL TRUCK-LESS/EQL 1 TON	490		108	FLEET PRIVATE BUS-L/E6000	1	
050	OPCL PASS-MORETHAN 6000	7		109	FLEET PRIVATE BUS > 6000	8,741	
051	2-5 YR APPORTIONED TRK	0		110	FLEET TRUCK - L/E 1 TON	413	
052	ARMED RSRV-PASS LE 6000	0		111	FLEET TRUCK > 1 TON	0	
053	ARMED RSRV-PASS GT 6000	0		112	FLEET FORESTRY	0	

** Note ** Counts do not include Plate-to-Owner Registration Classes. Example: Driver's Education.

RUNDATE 10/16/12
RUNTIME 09:10:39

PAGE 1
REPORT DATE 10/15/12

FY 2012
2 OF 2 PAGES

RTS.REG.9523
PRD2

TEXAS DEPARTMENT OF MOTOR VEHICLES
REGISTRATION AND TITLE SYSTEM
CURRENTLY REGISTERED VEHICLES - STATEWIDE TOTALS BY REGISTRATION CLASS

CURRENT AS OF: 10/12/2012

REG CD:	REGIS CLASS:	VEHICLE COUNT:	EXEMPT VEH. COUNT:	REG CD:	REGIS CLASS:	VEHICLE COUNT:	EXEMPT VEH. COUNT:
113	TOKEN TRAILER FLT	14,976		117	BRONZE STAR MEDAL MC	46	
114	DISTING SERVICE MEDAL	23		118	FLEET TOKEN TRLS	16	
115	DISTING SERVICE MEDAL MC	0		119	FLEET TRAILER	92	
116	BRONZE STAR MEDAL	1,080		138	ANTIQU TRAILER	0	

STATEWIDE VEHICLE TOTAL: 22,372,085

...END OF REPORT...

** Note ** Counts do not include Plate-to-Owner Registration Classes. Example: Driver's Education.

RUNDATE 10/16/12
RUNTIME 09:10:39

PAGE 2
REPORT DATE 10/16/12

FY 2011
1 OF 2 PAGES

RTS.REG.9523
PRD2

TEXAS DEPARTMENT OF MOTOR VEHICLES
REGISTRATION AND TITLE SYSTEM
CURRENTLY REGISTERED VEHICLES - STATENIDE TOTALS BY REGISTRATION CLASS

CURRENT AS OF: 10/07/2011

REG CD:	REGIS CLASS:	VEHICLE COUNT:	EXEMPT VEH. COUNT:	REG CD:	REGIS CLASS:	VEHICLE COUNT:	EXEMPT VEH. COUNT:
001	** 5-YR RENTAL TRAILER	0		054	ARMED RSRV-TRK LE 1 TON	0	
002	5-YR TOKEN TRAILER	14,109		055	HON CONSUL-PASS LE 6000	92	
003	GOLF CART	313		056	HON CONSUL-PASS GT 6000	2	
004	ANTIQUE MOTORCYCLE	5,046		057	HON CONSUL-TRK LE 1 TON	2	
005	ANTIQUE	94,682		058	TX GUARD-PASS LE 6000	0	
006	APPORTIONED	119,453		059	TX GUARD-PASS GT 6000	0	
007	ATV	0		060	TX GUARD-TRUCK LE 1 TON	0	
008	CITY BUS-LESS/EQL. 6000	2		061	COTTON TRK GT 1 TON	136	
009	CMCH	9		062	FARM TRK TRACTOR > 1TON	5,643	
010	COMBINATION	71,051		064	ANNUAL PERMIT TRUCK	12	
011	DISASTER RELIEF	244		065	FOREIGN ORGANIZATION	26	
012	** DRIVER EDUCATION	0		066	5-YR EVY RENTAL TRAILER	2,720	
013	DISABLED VETERAN	92,479		067	OPCL MOTORCYCLE	3	
014	FERTILIZER	15,636		068	PEARL HARBOR SURVIVOR MC	0	
015	FARM TRK-LESS/EQL 1 TON	169,861		069	DISABLED VETERAN MC	522	
016	FARM TRAILER	597,360		070	SEAS AG TRK <= 1 TON	0	
019	MACHINERY	55,052		071	SEAS AG TRK > 1 TON	171	
020	MOPED	2,901		072	SEAS AG FARM TRK <= 1 TON	2	
021	MOTOR BUS	2,504		073	SEAS AG FARM TRK > 1 TON	74	
022	MOTORCYCLE	425,376		074	SEAS AG FEM TRKTRAC >1TON	92	
023	OIL WELL PERMIT	5,178		075	SEAS AG COTTON TRK > 1TON	413	
024	PARADE	0		076	SEAS AG COMBINATION	1,286	
025	PASSENGER-LESS/EQL 6000	11,832,416		077	DISASTER RELIEF TRL	199	
026	PASSENGER-MORETHAN 6000	88,030		079	** PER DEALER	0	
027	POW	1,181		080	** PER DEALER MOTORCYCLE	0	
028	PRIVATEBUS-LESS/EQL6000	1,909		081	EXEMPT MOPED	1	
029	PEARL HARBOR SURVIVOR	296		082	PURPLE HEART MC	184	
030	PURPLE HEART	18,036		083	CMCH MC	0	
031	SOIL CONSERVATION TRUCK	196		084	LEGION OF VALOR MC	2	
032	SOIL CONSERVATION TRL	177		085	FLYING CROSS MEDAL RCPMT	792	
033	TOKEN TRAILER	180,854		086	FLY CRE MEDAL RCPMT MC	16	
034	TRACTOR	19		087	SILVER STAR MEDAL	244	
035	TRUCK-LESS/EQL. 1 TON	5,612,457		088	SILVER STAR MEDAL MC	11	
036	TRUCK-MORE THAN 1 TON	154,439		089	LEGION OF MERIT	1,070	
037	TRAILER	1,178,710		090	LEGION OF MERIT MC	27	
038	TRAVEL TRAILER	197,687		091	ANNUAL PERMIT TRAILER	6,661	
039	EXEMPT-NOT FOR TITLE ONLY	500,770		092	ROV	0	
040	CITY BUS-MORE THAN 6000	79		099	TITLE ONLY (NO REGIS)	2	
041	PRIVATEBUS-MORETHAN6000	12,857		100	FLEET CITY BUS - L/S 6000	0	
042	LOGLOADER	117		101	FLEET CITY BUS > 6000	0	
043	FARM TRK-MORE THAN 1TON	7,825		102	FLEET COMBINATION	15	
044	FORESTRY	544		103	FLEET MOPED	0	
045	LEGION OF VALOR	57		104	FLEET MOTOR BUS	0	
046	TOW TRK-LESS/EQL. 1 TON	2,851		105	FLEET MOTORCYCLE	0	
047	TOW TRK-MORE THAN 1 TON	6,706		106	FLEET PASSENGER-L/E 6000	691	
048	OPCL PASS LESS/EQL 6000	1,500		107	FLEET PASSENGER > 6000	1	
049	OPCL TRUCK-LESS/EQL 1 TON	515		108	FLEET PRIVATE BUS-L/E6000	0	
050	OPCL PASS-MORETHAN 6000	6		109	FLEET PRIVATE BUS > 6000	1	
051	2-4 YR APPORTIONED TRK	0		110	FLEET TRUCK - L/E 1 TON	8,007	
052	ARMED RSRV-PASS LE 6000	0		111	FLEET TRUCK > 1 TON	348	
053	ARMED RSRV-PASS GT 6000	0		112	FLEET FORESTRY	0	

** Note ** Counts do not include Plate-to-Owner Registration Classes. Example: Driver's Education.

RUNDATE 10/12/11
RUNTIME 11:33:33

PAGE 1
REPORT DATE 10/11/11

FY 2011
2 OF 2 PAGES

RTS.REG.9523
PRD2

TEXAS DEPARTMENT OF MOTOR VEHICLES
REGISTRATION AND TITLE SYSTEM
CURRENTLY REGISTERED VEHICLES - STATEWIDE TOTALS BY REGISTRATION CLASS

CURRENT AS OF: 10/07/2011

REG CD:	REGIS CLASS:	VEHICLE CDGNT:	EXEMPT VEH. COUNT:	REG CD:	REGIS CLASS:	VEHICLE COUNT:	EXEMPT VEH. COUNT:
113	TOKEN TRAILER FLT	10,729					

STATEWIDE VEHICLE TOTAL: 21,496,607

...END OF REPORT...

** Note ** Counts do not include Plate-to-Owner Registration Classes. Example: Driver's Education.

RUNDAYS 10/12/11
RUNTIME 11:53:33

PAGE 2
REPORT DATE 10/11/11

FY 2010

VTR-PDC QUARTERLY REPORT
 PROGRAM: REGCNTYU - N/C
 VTR.PDC.1001 <JE>

CURRENTLY REGISTERED VEHICLE REGCLASSCD TOTALS,
 BY COUNTY

PAGE 255
 RUN DATE 10/12/10
 DUMP DATE 10/09/10

 *** GRAND TOTALS ***

CLASS	TOTAL	REG CLASS DESCRIPTION	CLASS	TOTAL	REG CLASS DESCRIPTION
1	0	5-YR RENTAL TRAILER	51	0	5-YR. APPORTIONED TRAILER
2	20,801	5-YR TOKEN TRAILER	52	240	ARMED RSRV-PASS : LE 6000 LBS.
3	313	GOLF CART	53	2	ARMED RSRV-PASS : GT 6000 LBS.
4	4,196	ANTIQUE MOTORCYCLE	54	134	ARMED RSRV-TRK : LE 1 TON
5	79,912	ANTIQUE	55	88	HON COUNSEL-PASS : LE 6000 LBS.
6	106,966	APPORTIONED	56	2	HON COUNSEL-PASS : GT 6000 LBS.
7	1	ATV(HANDLED BY TEXAS PARKS & WILDLIFE)	57	1	HON COUNSEL-TRK : LE 1 TON
8	2	CITY BUS : LE 6000 LBS.	58	837	TX GUARD-PASS : LE 6000 LBS.
9	10	CMOH (CONGRESSIONAL MEDAL OF HONOR)	59	11	TX GUARD-PASS : GT 6000 LBS.
10	67,087	COMBINATION	60	703	TX GUARD-TRUCK : LE 1 TON
11	225	DISASTER RELIEF	61	168	COTTON TRK : GT 1 TON
12	0	DRIVER'S EDUCATION	62	5,673	FARM TRUCK TRACTOR
13	82,644	DISABLED VETERAN	63	0	SEASONAL AG/ANNUAL
14	637	FERTILIZER	64	13	ANNUAL PERMIT PLATE
15	169,517	FARM TRUCK: LE 1 TON	65	26	FOREIGN ORGANIZATION
16	589,483	FARM TRAILER	66	2,821	5-YR Hvy RENTAL TRAILER
19	45,909	MACHINERY	67	2	OFCL MOTORCYCLE
20	2,875	MOPED	68	0	PEARL HARBOR SURVIVOR M/C
21	2,498	MOTOR BUS	69	385	DISABLED VETERAN M/C
22	415,526	MOTORCYCLE	70	2	SEASONAL AG TRK <= 1 TON
23	4,788	OIL WELL PERMIT	71	244	SEASONAL AG TRK > 1 TON
24	0	PARADE	72	0	SEASONAL AG FARM TRK <= 1 TON
25	11,620,482	PASSENGER : LE 6000 LBS.	73	109	SEASONAL AG FARM TRK > 1 TON
26	89,062	PASSENGER : GT 6000 LBS.	74	131	SEASONAL AG FARM TRK-TRAC 1 TON
27	1,337	POW (PRISONER OF WAR)	75	521	SEASONAL AG COTTON TRK > 1 TON
28	1,953	PRIVATE BUS : LE 6000 LBS.	76	1,704	SEASONAL AG COMBINATION
29	337	PEARL HARBOR	77	182	DISASTER RELIEF TRL
30	18,167	PURPLE HEART	79	0	PER DEALER
31	184	SOIL CONSERVATION TRUCK	80	0	PER DEALER MOTORCYCLE
32	177	SOIL CONSERVATION TRAILER	81	1	EXEMPT MOPED
33	174,991	TOKEN TRAILER	82	241	PURPLE HEART MC
34	22	TRACTOR	83	0	CMOH MC
35	5,609,210	TRUCK : LE 1 TON	84	1	LEGION OF VALOR MC
36	155,460	TRUCK : GT 1 TON	85	666	FLYING CROSS MEDAL RECPNT
37	1,171,980	TRAILER	86	11	FLY CRS MEDAL RECPNT MC
38	195,893	TRAVEL TRAILER	87	197	SILVER STAR MEDAL
39	494,330	EXEMPT	88	9	SILVER STAR MEDAL MC
40	84	CITY BUS : GT 6000 LBS.	89	685	LEGION OF MERIT
41	12,359	PRIVATE BUS : GT 6000 LBS.	90	22	LEGION OF MERIT MC
42	111	LOGLOADER	91	5,893	ANNUAL PERMIT TRAILER PLT
43	8,133	FARM TRUCK : GT 1 TON	99	5	TITLE ONLY (NO REGIS)
44	569	FORESTRY			
45	53	LEGION OF VALOR			
46	3,075	TOW TRUCK : LE 1 TON			
47	6,731	TOW TRUCK : GT 1 TON			
48	1,513	OFCL (OFFICIAL) PASSENGER : LE 6000 LBS.			
49	511	OFCL TRUCK : LE 1 TON			
50	5	OFCL (OFFICIAL) PASSENGER : GT 6000 LBS.			
	21,181,849	GRAND TOTAL, STATEWIDE			

<<< END OF REPORT >>>

FY 2009

VTR-PDC QUARTERLY REPORT
 PROGRAM: REGCNTYU - N/C
 VTR.PDC.1001 <JB>

CURRENTLY REGISTERED VEHICLE REGCLASSCD TOTALS,
 BY COUNTY

PAGE 255
 RUN DATE 10/12/09
 DUMP DATE 10/10/09

 *** GRAND TOTALS ***

CLASS	TOTAL	REG CLASS DESCRIPTION	CLASS	TOTAL	REG CLASS DESCRIPTION
1	0	5-YR RENTAL TRAILER	51	0	5-YR. APPORTIONED TRAILER
2	24,897	5-YR TOKEN TRAILER	52	238	ARMED RSRV-PASS : LE 6000 LBS.
3	282	GOLF CART	53	2	ARMED RSRV-PASS : GT 6000 LBS.
4	3,381	ANTIQUE MOTORCYCLE	54	132	ARMED RSRV-TRK : LE 1 TON
5	65,409	ANTIQUE	55	92	HON COUNSEL-PASS : LE 6000 LBS.
6	102,047	APPORTIONED	56	2	HON COUNSEL-PASS : GT 6000 LBS.
7	2	ATV (ALL TERRAIN VEHICLE)	57	1	HON COUNSEL-TRK : LE 1 TON
8	2	CITY BUS : LE 6000 LBS.	58	735	TX GUARD-PASS : LE 6000 LBS.
9	10	CMOH (CONGRESSIONAL MEDAL OF HONOR)	59	9	TX GUARD-PASS : GT 6000 LBS.
10	68,643	COMBINATION	60	651	TX GUARD-TRUCK : LE 1 TON
11	197	DISASTER RELIEF	61	149	COTTON TRK : GT 1 TON
12	0	DRIVER'S EDUCATION	62	5,345	FARM TRUCK TRACTOR
13	71,979	DISABLED VETERAN	63	0	SEASONAL AG/ANNUAL
14	668	FERTILIZER	64	22	ANNUAL PERMIT PLATE
15	167,935	FARM TRUCK : LE 1 TON	65	22	FOREIGN ORGANIZATION
16	576,780	FARM TRAILER	66	2,912	5-YR HVY RENTAL TRAILER
19	44,604	MACHINERY	67	3	OFCL MOTORCYCLE
20	3,341	MOPED	68	0	PEARL HARBOR SURVIVOR M/C
21	2,420	MOTOR BUS	69	251	DISABLED VETERAN M/C
22	420,063	MOTORCYCLE	70	4	SEASONAL AG TRK <= 1 TON
23	4,797	OIL WELL PERMIT	71	254	SEASONAL AG TRK > 1 TON
24	0	PARADE	72	2	SEASONAL AG FARM TRK <= 1 TON
25	11,453,354	PASSENGER : LE 6000 LBS.	73	93	SEASONAL AG FARM TRK > 1 TON
26	88,585	PASSENGER : GT 6000 LBS.	74	114	SEASONAL AG FARM TRK-TRAC 1 TON
27	1,466	POW (PRISONER OF WAR)	75	326	SEASONAL AG COTTON TRK > 1 TON
28	2,017	PRIVATE BUS : LE 6000 LBS.	76	1,432	SEASONAL AG COMBINATION
29	379	PEARL HARBOR	77	133	DISASTER RELIEF TRL
30	18,047	PURPLE HEART	79	0	PER DEALER
31	189	SOIL CONSERVATION TRUCK	80	0	PER DEALER MOTORCYCLE
32	188	SOIL CONSERVATION TRAILER	81	1	EXEMPT MOPED
33	175,039	TOKEN TRAILER	82	103	PURPLE HEART MC
34	51	TRACTOR	83	0	CMOH MC
35	5,588,568	TRUCK : LE 1 TON	84	1	LEGION OF VALOR MC
36	157,770	TRUCK : GT 1 TON	85	506	FLYING CROSS MEDAL RECENT
37	1,156,218	TRAILER	86	7	FLY CRS MEDAL RECENT MC
38	190,802	TRAVEL TRAILER	87	149	SILVER STAR MEDAL
39	483,425	EXEMPT	88	8	SILVER STAR MEDAL MC
40	80	CITY BUS : GT 6000 LBS.	89	370	LEGION OF MERIT
41	12,228	PRIVATE BUS : GT 6000 LBS.	90	12	LEGION OF MERIT MC
42	96	LOGLOADER	91	4,988	ANNUAL PERMIT TRAILER PLT
43	7,937	FARM TRUCK : GT 1 TON	99	1	TITLE ONLY (NO REGIS)
44	600	FORESTRY			
45	52	LEGION OF VALOR			
46	3,121	TOW TRUCK : LE 1 TON			
47	6,563	TOW TRUCK : GT 1 TON			
48	1,529	OFCL (OFFICIAL) PASSENGER : LE 6000 LBS.			
49	526	OFCL TRUCK : LE 1 TON			
50	4	OFCL (OFFICIAL) PASSENGER : GT 6000 LBS.			
	20,925,361	GRAND TOTAL, STATEWIDE			

<<< END OF REPORT >>>

FY 2008

VTR-PDC QUARTERLY REPORT
 PROGRAM: REGCNTYU - N/C
 VTR.PDC.1001 <JE>

CURRENTLY REGISTERED VEHICLE RECLASSCD TOTALS,
 BY COUNTY

PAGE 255
 RUN DATE 10/13/08
 DUMP DATE 10/13/08

 *** GRAND TOTALS ***

CLASS	TOTAL	REG CLASS DESCRIPTION	CLASS	TOTAL	REG CLASS DESCRIPTION
1	0	S-YR RENTAL TRAILER	51	0	5-YR. APPORTIONED TRAILER
2	23,454	S-YR TOKEN TRAILER	52	245	ARMED RSRV-PASS : LE 6000 LBS.
3	246	GOLF CART	53	1	ARMED RSRV-PASS : GT 6000 LBS.
4	2,474	ANTIQUE MOTORCYCLE	54	134	ARMED RSRV-TRK : LE 1 TON
5	49,530	ANTIQUE	55	90	HCN COUNSEL-PASS : LE 6000 LBS.
6	104,377	APPORTIONED	56	2	HCN COUNSEL-PASS : GT 6000 LBS.
7	9	ATV (ALL TERRAIN VEHICLE)	57	4	HCN COUNSEL-TRK : LE 1 TON
8	4	CITY BUS : LE 6000 LBS.	58	656	TX GUARD-PASS : LE 6000 LBS.
9	10	CMOH (CONGRESSIONAL MEDAL OF HONOR)	59	8	TX GUARD-PASS : GT 6000 LBS.
10	73,208	COMBINATION	60	592	TX GUARD-TRUCK : LE 1 TON
11	170	DISASTER RELIEF	61	175	COTTON TRK : GT 1 TON
12	0	DRIVER'S EDUCATION	62	5,042	FARM TRUCK TRACTOR
13	62,333	DISABLED VETERAN	63	0	SEASONAL AG/ANNUAL
14	676	FERTILIZER	64	18	ANNUAL PERMIT PLATE
15	163,241	FARM TRUCK : LE 1 TON	65	34	FOREIGN ORGANIZATION
16	555,878	FARM TRAILER	66	2,926	5-YR HVY RENTAL TRAILER
19	42,424	MACHINERY	67	0	OPCL MOTORCYCLE
20	3,589	MOPED	68	0	PEARL HARBOR SURVIVOR M/C
21	2,493	MOTOR BUS ✓	69	165	DISABLED VETERAN M/C
22	420,877	MOTORCYCLE	70	3	SEASONAL AG TRK <= 1 TON
23	4,879	OIL WELL PERMIT	71	252	SEASONAL AG TRK > 1 TON
24	0	PARADE ✓	72	3	SEASONAL AG FARM TRK <= 1 TON
25	11,239,751	PASSENGER : LE 6000 LBS.	73	122	SEASONAL AG FARM TRK > 1 TON
26	85,929	PASSENGER : GT 6000 LBS.	74	117	SEASONAL AG FARM TRK-TRAC 1 TON
27	1,604	POW (PRISONER OF WAR)	75	221	SEASONAL AG COTTON TRK > 1 TON
28	2,065	PRIVATE BUS : LE 6000 LBS.	76	1,311	SEASONAL AG COMBINATION
29	436	PEARL HARBOR	77	152	DISASTER RELIEF TRL
30	17,673	PURPLE HEART	79	0	PER DEALER
31	188	SOIL CONSERVATION TRUCK	80	0	PER DEALER MOTORCYCLE
32	189	SOIL CONSERVATION TRAILER	81	1	EXEMPT MOPED
33	176,797	TOKEN TRAILER	82	64	PURPLE HEART MC
34	59	TRACTOR	83	0	CMOH MC
35	5,540,227	TRUCK : LE 1 TON	84	0	LEGION OF VALOR MC
36	161,560	TRUCK : GT 1 TON	85	385	FLYING CROSS MEDAL RECPNT
37	1,129,206	TRAILER	86	4	FLY CRS MEDAL RECPNT MC
38	189,258	TRAVEL TRAILER	87	80	SILVER STAR MEDAL
39	471,022	EXEMPT	88	5	SILVER STAR MEDAL MC
40	73	CITY BUS : GT 6000 LBS.	89	131	LEGION OF MERIT
41	11,693	PRIVATE BUS : GT 6000 LBS.	90	5	LEGION OF MERIT MC
42	90	LOGLOADER	91	4,812	ANNUAL PERMIT TRAILER PLT
43	8,124	FARM TRUCK : GT 1 TON	99	0	TITLE ONLY (NO REGIS)
44	614	FORESTRY			
45	50	LEGION OF VALOR			
46	3,208	TOW TRUCK : LE 1 TON			
47	6,304	TOW TRUCK : GT 1 TON			
48	1,530	OPCL (OFFICIAL) PASSENGER : LE 6000 LBS.			
49	513	OPCL TRUCK : LE 1 TON			
50	6	OPCL (OFFICIAL) PASSENGER : GT 6000 LBS.			
	20,575,801	GRAND TOTAL, STATEWIDE			

<<< END OF REPORT >>>

FY 2007

VTR-PDC QUARTERLY REPORT		CURRENTLY REGISTERED VEHICLE REGCLASSCD TOTALS.		PAGE 255	
PROGRAM: REGONTYU - N/C		BY COUNTY		RUN DATE 10/15/07	
VTR.PDC.1001 <JE>				DUMP DATE 10/12/07	

*** GRAND TOTALS ***					

CLASS	TOTAL	REG CLASS DESCRIPTION	CLASS	TOTAL	REG CLASS DESCRIPTION
1	0	5-YR RENTAL TRAILER	41	11,071	PRIVATE BUS : GT 6000 LBS.
2	18,853	5-YR TOKEN TRAILER	42	115	LDGLOADER
3	247	GOLF CART	43	8,556	FARM TRUCK : GT 1 TON
4	3,128	ANTIQUE MOTORCYCLE	44	639	FORESTRY
5	63,511	ANTIQUE	45	49	LEGION OF VALOR
6	103,369	APPORTIONED	46	3,434	TOW TRUCK : LE 1 TON
7	26	ATV (ALL TERRAIN VEHICLE)	47	6,166	TOW TRUCK : GT 1 TON
8	9	CITY BUS : LE 6000 LBS.	48	1,530	OFCL (OFFICIAL) PASSENGER : LE 6000 LBS.
9	8	COMH (CONGRESSIONAL MEDAL OF HONOR)	49	543	OFCL TRUCK : LE 1 TON
10	73,526	COMBINATION	50	5	OFCL (OFFICIAL) PASSENGER : GT 6000 LBS.
11	152	DISASTER RELIEF	51	0	5-YR. APPORTIONED TRAILER
12	0	DRIVER'S EDUCATION	52	213	ARMED RSRV-PASS : LE 6000 LBS.
13	54,840	DISABLED VETERAN	53	1	ARMED RSRV-PASS : GT 6000 LBS.
14	714	FERTILIZER	54	136	ARMED RSRV-TRK : LE 1 TON
15	166,108	FARM TRUCK : LE 1 TON	55	100	HON COUNSEL-PASS : LE 6000 LBS.
16	547,687	FARM TRAILER	56	1	HON COUNSEL-PASS : GT 6000 LBS.
19	39,675	MACHINERY	57	4	HON COUNSEL-TRK : LE 1 TON
20	2,586	MOPED	58	548	TX GUARD-PASS : LE 6000 LBS.
21	2,264	MOTOR BUS	59	5	TX GUARD-PASS : GT 6000 LBS.
22	369,734	MOTORCYCLE	60	539	TX GUARD-TRUCK : LE 1 TON
23	4,582	OIL WELL PERMIT	61	210	COTTON TRK : GT 1 TON
24	4	PARADE	62	4,869	FARM TRUCK TRACTOR
25	11,069,564	PASSENGER : LE 6000 LBS.	63	0	SEASONAL AG/ANNUAL
26	88,913	PASSENGER : GT 6000 LBS.	64	1,741	ANNUAL PERMIT PLATE
27	1,717	POM (PRISONER OF WAR)	65	32	FOREIGN ORGANIZATION
28	2,223	PRIVATE BUS : LE 6000 LBS.	66	2,358	5-YR HVY RENTAL TRAILER
29	477	PEARL HARBOR	67	1	OFCL MOTORCYCLE
30	17,256	PURPLE HEART	68	0	PEARL HARBOR SURVIVOR M/C
31	201	SOIL CONSERVATION TRUCK	69	99	DISABLED VETERAN M/C
32	200	SOIL CONSERVATION TRAILER	70	4	SEASONAL AG TRK <= 1 TON
33	175,336	TOKEN TRAILER	71	298	SEASONAL AG TRK > 1 TON
34	58	TRACTOR	72	2	SEASONAL AG FARM TRK <= 1 TON
35	5,592,441	TRUCK : LE 1 TON	73	147	SEASONAL AG FARM TRK > 1 TON
36	160,140	TRUCK : GT 1 TON	74	118	SEASONAL AG FARM TRK-TRAC 1 TON
37	1,109,875	TRAILER	75	341	SEASONAL AG COTTON TRK > 1 TON
38	189,619	TRAVEL TRAILER	76	1,201	SEASONAL AG COMBINATION
39	454,121	EXEMPT	77	131	DISASTER RELIEF TRL
40	119	CITY BUS : GT 6000 LBS.	79	0	PER DEALER
			80	0	PER DEALER MOTORCYCLE
			81	0	EXEMPT MOPED
			82	6	PURPLE HEART MC
			99	0	TITLE ONLY (NO REGIS)
20,358,594		GRAND TOTAL, STATEWIDE			
<<< END OF REPORT >>>					

FY 2006

VTR-PDC QUARTERLY REPORT		CURRENTLY REGISTERED VEHICLE REGCLASSCD TOTALS		PAGE 255	
PROGRAM: REGCNTYU - N/C		BY COUNTY		RUN DATE 03/15/07	
VTR.PDC.1001 <JE>				DUMP DATE 10/14/06	

*** GRAND TOTALS ***					

CLASS	TOTAL	REG CLASS DESCRIPTION	CLASS	TOTAL	REG CLASS DESCRIPTION
1	0	5-YR RENTAL TRAILER	41	10,346	PRIVATE BUS : GT 6000 LBS.
2	17,196	5-YR TOKEN TRAILER	42	131	LOGLOADER
3	260	GOLF CART	43	8,234	FARM TRUCK : GT 1 TON
4	2,632	ANTIQUE MOTORCYCLE	44	601	FORESTRY
5	54,393	ANTIQUE	45	46	LEGION OF VALOR
6	95,535	APPORTIONED	46	3,416	TOW TRUCK : LE 1 TON
7	1,506	ATV (ALL TERRAIN VEHICLE)	47	5,697	TOW TRUCK : GT 1 TON
8	10	CITY BUS : LE 6000 LBS.	48	1,518	DFCL (OFFICIAL) PASSENGER : LE 6000 LBS.
9	9	CMOH (CONGRESSIONAL MEDAL OF HONOR)	49	559	DFCL TRUCK : LE 1 TON
10	71,586	COMBINATION	50	13	DFCL (OFFICIAL) PASSENGER : GT 6000 LBS.
11	153	DISASTER RELIEF	51	0	5-YR. APPORTIONED TRAILER
12	0	DRIVER'S EDUCATION	52	192	ARMED RSRV-PASS : LE 6000 LBS.
13	50,754	DISABLED VETERAN	53	23	ARMED RSRV-PASS : GT 6000 LBS.
14	715	FERTILIZER	54	135	ARMED RSRV-TRK : LE 1 TON
15	165,987	FARM TRUCK : LE 1 TON	55	78	HON COUNSEL-PASS : LE 6000 LBS.
16	528,251	FARM TRAILER	56	14	HON COUNSEL-PASS : GT 6000 LBS.
19	32,471	MACHINERY	57	5	HON COUNSEL-TRK : LE 1 TON
20	2,643	MOPED	58	452	TX GUARD-PASS : LE 6000 LBS.
21	2,005	MOTOR BUS	59	79	TX GUARD-PASS : GT 6000 LBS.
22	242,214	MOTORCYCLE	60	513	TX GUARD-TRUCK : LE 1 TON
23	4,006	OIL WELL PERMIT	61	231	COTTON TRK : GT 1 TON
24	4	PARADE	62	4,490	FARM TRUCK TRACTOR
25	10,726,666	PASSENGER : LE 6000 LBS.	63	0	SEASONAL AG/ANNUAL
26	87,608	PASSENGER : GT 6000 LBS.	64	1,424	ANNUAL PERMIT PLATE
27	1,861	POW (PRISONER OF WAR)	65	37	FOREIGN ORGANIZATION
28	2,258	PRIVATE BUS : LE 6000 LBS.	66	1,350	5-YR HVY RENTAL TRAILER
29	539	PEARL HARBOR	67	1	DFCL MOTORCYCLE
30	17,491	PURPLE HEART	68	0	PEARL HARBOR SURVIVOR M/C
31	206	SOIL CONSERVATION TRUCK	69	72	DISABLED VETERAN M/C
32	214	SOIL CONSERVATION TRAILER	70	4	SEASONAL AG TRK <= 1 TON
33	168,456	TOKEN TRAILER	71	287	SEASONAL AG TRK > 1 TON
34	82	TRACTOR	72	4	SEASONAL AG FARM TRK <= 1 TON
35	5,434,231	TRUCK : LE 1 TON	73	71	SEASONAL AG FARM TRK > 1 TON
36	151,249	TRUCK : GT 1 TON	74	50	SEASONAL AG FARM TRK-TRAC 1 TON
37	1,060,078	TRAILER	75	388	SEASONAL AG COTTON TRK > 1 TON
38	183,086	TRAVEL TRAILER	76	1,036	SEASONAL AG COMBINATION
39	440,195	EXEMPT	77	126	DISASTER RELIEF TRL
40	131	CITY BUS : GT 6000 LBS.	79	0	PER DEALER
			80	0	PER DEALER MOTORCYCLE
			81	0	EXEMPT MOPED
			88	0	TITLE ONLY (NO REGIS)
19,688,321		GRAND TOTAL, STATEWIDE			
<<< END OF REPORT >>>					

FY 2005

PDC QUARTERLY REPORT			CURRENTLY REGISTERED VEHICLE REGCLASSCD TOTALS			PAGE 255		
DUMP DATE 10/08/05			BY COUNTY			RUN DATE 10/12/05		
VTR.PDC.1001						REGCNTYT		

*** GRAND TOTALS ***								

CLASS	TOTAL	REG CLASS DESCRIPTION	CLASS	TOTAL	REG CLASS DESCRIPTION	CLASS	TOTAL	REG CLASS DESCRIPTION
1	0	5-YR RENTAL TRAILER	37	1,038,581	TRAILER			
2	20,043	5-YR TOKEN TRAILER	38	183,693	TRAVEL TRAILER			
3	289	GOLF CART	39	436,372	EXEMPT			
4	2,155	ANTIQUE MOTORCYCLE	40	145	CITY BUS : GT 6000 LBS.			
5	45,696	ANTIQUE	41	9,680	PRIVATE BUS : GT 6000 LBS.			
6	90,597	APPORTIONED	42	199	LOGLOADER			
7	1,643	ATV (ALL TERRAIN VEHICLE)	43	9,150	FARM TRUCK : GT 1 TON			
8	10	CITY BUS : LE 6000 LBS.	44	663	FORESTRY			
9	6	CMOH (CONGRESSIONAL MEDAL OF HONOR)	45	10	LEGION OF VALOR			
10	67,732	COMBINATION	46	3,557	TOW TRUCK : LE 1 TON			
11	250	DISASTER RELIEF	47	5,353	TOW TRUCK : GT 1 TON			
12	0	DRIVER'S EDUCATION	48	1,425	OFCL (OFFICIAL) PASSENGER : LE 6000 LBS.			
13	41,563	DISABLED VETERAN	49	578	OFCL TRUCK : LE 1 TON			
14	770	FERTILIZER	50	9	OFCL (OFFICIAL) PASSENGER : GT 6000 LBS.			
15	167,745	FARM TRUCK : LE 1 TON	51	345	5-YR. APPORTIONED TRAILER			
16	516,062	FARM TRAILER	52	196	ARMED RSRV-PASS : LE 6000 LBS.			
19	28,407	MACHINERY	53	13	ARMED RSRV-PASS : GT 6000 LBS.			
20	2,355	MOPED	54	151	ARMED RSRV-TRK : LE 1 TON			
21	1,916	MOTOR BUS	55	30	HON COUNSEL-PASS : LE 6000 LBS.			
22	311,464	MOTORCYCLE	56	4	HON COUNSEL-PASS : GT 6000 LBS.			
23	3,632	OIL WELL PERMIT	57	9	HON COUNSEL-TRK : LE 1 TON			
24	3	PARADE	58	432	TX GUARD-PASS : LE 6000 LBS.			
25	10,517,928	PASSENGER : LE 6000 LBS.	59	37	TX GUARD-PASS : GT 6000 LBS.			
26	88,814	PASSENGER : GT 6000 LBS.	60	491	TX GUARD-TRUCK : LE 1 TON			
27	1,981	POW (PRISONER OF WAR)	61	266	COTTON TRK : GT 1 TON			
28	2,394	PRIVATE BUS : LE 6000 LBS.	62	4,603	FARM TRUCK TRACTOR			
29	583	PEARL HARBOR	63	1,316	SEASONAL AG/ANNUAL			
30	17,217	PURPLE HEART	64	1,210	ANNUAL PERMIT PLATE			
31	201	SOIL CONSERVATION TRUCK	65	21	FOREIGN ORGANIZATION			
32	230	SOIL CONSERVATION TRAILER	66	1,352	5-YR HVY RENTAL TRAILER			
33	159,819	TOKEN TRAILER	67	0	OFCL MOTORCYCLE			
34	127	TRACTOR	68	0	PEARL HARBOR SURVIVOR M/C			
35	5,371,040	TRUCK : LE 1 TON	75	26	DISABLED VETERAN M/C			
36	144,568	TRUCK : GT 1 TON						
19,307,173		GRAND TOTAL, STATEWIDE						
<<< END OF REPORT >>>								

FY 2004

GRAND TOTALS
DUMP DATE 10/09/04

CURRENTLY REGISTERED REGCLASSCD

PAGE 255
RUN DATE 10/11/04
REGCNTYT

CLASS	CURRENT	REG CLASS DESCRIPTION
2	19,200	5-YR TOKEN TRAILER
3	288	GOLF CART
4	1,684	ANTIQUE MOTORCYCLE
5	37,974	ANTIQUE
6	80,942	APPORTIONED
7	1,640	ATV (ALL TERRAIN VEHICLE)
8	11	CITY BUS : LE 6000 LBS.
9	11	CMOH (CONGRESSIONAL MEDAL OF HONOR)
10	63,995	COMBINATION
11	254	DISASTER RELIEF
13	36,835	DISABLED VETERAN
14	792	FERTILIZER
15	167,662	FARM TRUCK: LE 1 TON
16	493,529	FARM TRAILER
19	26,265	MACHINERY
20	2,049	MOPED
21	1,773	MOTOR BUS
22	276,692	MOTORCYCLE
23	3,515	OIL WELL PERMIT
24	3	PARADE
25	10,296,782	PASSENGER : LE 6000 LBS.
26	89,524	PASSENGER : GT 6000 LBS.
27	2,094	POW (PRISONER OF WAR)
28	2,504	PRIVATE BUS : LE 6000 LBS.
29	614	PEARL HARBOR
30	17,427	PURPLE HEART
31	211	SOIL CONSERVATION TRUCK
32	248	SOIL CONSERVATION TRAILER
33	153,675	TOKEN TRAILER
34	142	TRACTOR
35	5,269,577	TRUCK : LE 1 TON
36	140,418	TRUCK : GT 1 TON
37	1,002,850	TRAILER
38	176,334	TRAVEL TRAILER
39	422,688	EXEMPT
40	150	CITY BUS : GT 6000 LBS.
41	8,932	PRIVATE BUS : GT 6000 LBS.
42	155	LOGLOADER
43	9,442	FARM TRUCK : GT 1 TON
44	688	FORESTRY
45	38	LEGION OF VALOR
46	3,843	TOW TRUCK : LE 1 TON
47	5,183	TOW TRUCK : GT 1 TON
48	1,348	OFCL (OFFICIAL) PASSENGER : LE 6000 LBS.
49	557	OFCL TRUCK : LE 1 TON
50	7	OFCL (OFFICIAL) PASSENGER : GT 6000 LBS.
51	2,047	5-YR. APPORTIONED TRAILER
52	223	ARMED RSRV-PASS : LE 6000 LBS.
53	7	ARMED RSRV-PASS : GT 6000 LBS.
54	153	ARMED RSRV-TRK : LE 1 TON
55	75	HON COUNSEL-PASS : LE 6000 LBS.
56	1	HON COUNSEL-PASS : GT 6000 LBS.
57	4	HON COUNSEL-TRK : LE 1 TON
58	497	TX GUARD-PASS : LE 6000 LBS.
59	14	TX GUARD-PASS : GT 6000 LBS.
60	547	TX GUARD-TRUCK : LE 1 TON
61	258	COTTON TRK : GT 1 TON
62	4,416	FARM TRUCK TRACTOR
63	1,138	SEASONAL AG/ANNUAL
64	563	ANNUAL PERMIT PLATE
65	24	FOREIGN ORGANIZATION
	18,830,512	GRAND TOTALS

FY 2003

GRAND TOTALS
DUMP DATE 10/10/03

CURRENTLY REGISTERED REGCLASSCD

PAGE 255
RUN DATE 10/13/03
REGCNTYT

<u>CLASS</u>	<u>CURRENT</u>	<u>REG CLASS DESCRIPTION</u>
2	14,542	5-YR TOKEN TRAILER
3	263	GOLF CART
4	1,354	ANTIQUE MOTORCYCLE
5	31,430	ANTIQUE
6	75,286	APPORTIONED
7	1,352	ATV (ALL TERRAIN VEHICLE)
8	17	CITY BUS : LE 6000 LBS.
9	11	CMOH (CONGRESSIONAL MEDAL OF HONOR)
10	62,932	COMBINATION
11	241	DISASTER RELIEF
13	32,010	DISABLED VETERAN
14	831	FERTILIZER
15	165,641	FARM TRUCK: LE 1 TON
16	461,039	FARM TRAILER
19	25,407	MACHINERY
20	1,702	MOPED
21	1,758	MOTOR BUS
22	249,235	MOTORCYCLE
23	3,435	OIL WELL PERMIT
24	2	PARADE
25	10,174,751	PASSENGER : LE 6000 LBS.
26	88,206	PASSENGER : GT 6000 LBS.
27	2,251	POW (PRISONER OF WAR)
28	2,657	PRIVATE BUS : LE 6000 LBS.
29	669	PEARL HARBOR
30	17,582	PURPLE HEART
31	207	SOIL CONSERVATION TRUCK
32	251	SOIL CONSERVATION TRAILER
33	148,611	TOKEN TRAILER
34	178	TRACTOR
35	5,139,701	TRUCK : LE 1 TON
36	138,584	TRUCK : GT 1 TON
37	968,245	TRAILER
38	172,431	TRAVEL TRAILER
39	409,765	EXEMPT
40	209	CITY BUS : GT 6000 LBS.
41	8,757	PRIVATE BUS : GT 6000 LBS.
42	164	LOGLOADER
43	9,475	FARM TRUCK : GT 1 TON
44	639	FORESTRY
45	37	LEGION OF VALOR
46	4,062	TOW TRUCK : LE 1 TON
47	5,010	TOW TRUCK : GT 1 TON
48	1,417	OFCL (OFFICIAL) PASSENGER : LE 6000 LBS.
49	567	OFCL TRUCK : LE 1 TON
50	9	OFCL (OFFICIAL) PASSENGER : GT 6000 LBS.
51	7,054	5-YR. APPORTIONED TRAILER
52	234	ARMED RSRV-PASS : LE 6000 LBS.
53	7	ARMED RSRV-PASS : GT 6000 LBS.
54	156	ARMED RSRV-TRK : LE 1 TON
55	68	HON COUNSEL-PASS : LE 6000 LBS.
56	1	HON COUNSEL-PASS : GT 6000 LBS.
57	7	HON COUNSEL-TRK : LE 1 TON
58	508	TX GUARD-PASS : LE 6000 LBS.
59	5	TX GUARD-PASS : GT 6000 LBS.
60	539	TX GUARD-TRUCK : LE 1 TON
61	258	COTTON TRK : GT 1 TON
62	4,129	FARM TRUCK TRACTOR
63	1,072	SEASONAL AG/ANNUAL
64	225	ANNUAL PERMIT PLATE
	18,437,187	GRAND TOTALS

FY 2002

GRAND TOTALS FOR ALL REGISTRATION CLASS CODES
RUN DATE 10/21/02

PAGE 255

CLASS	TOTALS	REG CLASS DESCRIPTION
1	0	5-YR RENTAL TRAILER
2	15,606	5-YR TOKEN TRAILER
3	257	GOLF CART
4	1,233	ANTIQUE MOTORCYCLE
5	28,662	ANTIQUE
6	73,722	APPORTIONED
7	1,362	ATV (ALL TERRAIN VEHICLE)
8	21	CITY BUS : LE 6000 LBS.
9	11	CMOH (CONGRESSIONAL MEDAL OF HONOR)
10	64,120	COMBINATION
11	143	DISASTER RELIEF
12	0	DRIVER'S EDUCATION
13	23,092	DISABLED VETERAN
14	886	FERTILIZER
15	167,108	FARM TRUCK: LE 1 TON
16	437,177	FARM TRAILER
19	27,090	MACHINERY
20	1,334	MOPED
21	1,892	MOTOR BUS
22	227,393	MOTORCYCLE
23	3,382	OIL WELL PERMIT
24	1	PARADE
25	10,187,592	PASSENGER : LE 6000 LBS.
26	87,657	PASSENGER : GT 6000 LBS.
27	2,396	POW (PRISONER OF WAR)
28	2,745	PRIVATE BUS : LE 6000 LBS.
29	715	PEARL HARBOR
30	17,850	PURPLE HEART
31	217	SOIL CONSERVATION TRUCK
32	268	SOIL CONSERVATION TRAILER
33	147,951	TOKEN TRAILER
34	147	TRACTOR
35	5,044,364	TRUCK : LE 1 TON
36	139,621	TRUCK : GT 1 TON
37	952,601	TRAILER
38	170,559	TRAVEL TRAILER
39	397,740	EXEMPT
40	231	CITY BUS : GT 6000 LBS.
41	8,069	PRIVATE BUS : GT 6000 LBS.
42	159	LOGLOADER
43	10,029	FARM TRUCK : GT 1 TON
44	664	FORESTRY
45	41	LEGION OF VALOR
46	4,404	TOW TRUCK : LE 1 TON
47	4,972	TOW TRUCK : GT 1 TON
48	1,460	OFCL (OFFICIAL) PASSENGER : LE 6000 LBS.
49	564	OFCL TRUCK : LE 1 TON
50	6	OFCL (OFFICIAL) PASSENGER : GT 6000 LBS.
51	7,600	5-YR. APPORTIONED TRAILER
52	253	ARMED RSRV-PASS : LE 6000 LBS.
53	1	ARMED RSRV-PASS : GT 6000 LBS.
54	154	ARMED RSRV-TRK : LE 1 TON
55	82	HON COUNSEL-PASS : LE 6000 LBS.
56	1	HON COUNSEL-PASS : GT 6000 LBS.
57	10	HON COUNSEL-TRK : LE 1 TON
58	505	TX GUARD-PASS : LE 6000 LBS.
59	4	TX GUARD-PASS : GT 6000 LBS.
60	534	TX GUARD-TRUCK : LE 1 TON
61	304	COTTON TRK : GT 1 TON
62	4,037	FARM TRUCK TRACTOR
63	1,055	SEASONAL AG/ANNUAL
64	0	ANNUAL PERMIT PLATE
	18,272,054	GRAND TOTAL OF CURRENT REGISTRATIONS FOR ALL COUNTIES

GRAND TOTALS FOR ALL REGISTRATION CLASS CODES		RUN DATE 10/16/0		PAGE 255		FY 2001	
CLASS	NUMBER			CLASS DESCRIPTION			
2	8,101	CURRENT RECORDS FOUND FOR	5-YR TOKEN TRAILER				
3	225	CURRENT RECORDS FOUND FOR	GOLF CART				
4	1,096	CURRENT RECORDS FOUND FOR	ANTIQUE MOTORCYCLE				
5	25,966	CURRENT RECORDS FOUND FOR	ANTIQUE				
6	92,517	CURRENT RECORDS FOUND FOR	APPORTIONED				
7	1,649	CURRENT RECORDS FOUND FOR	ATV (ALL TERRAIN VEHICLE)				
8	18	CURRENT RECORDS FOUND FOR	CITY BUS : <= 6000 LBS.				
9	8	CURRENT RECORDS FOUND FOR	CMOH (CONGRESSIONAL MEDAL OF HONOR)				
10	64,832	CURRENT RECORDS FOUND FOR	COMBINATION				
11	218	CURRENT RECORDS FOUND FOR	DISASTER RELIEF				
13	26,588	CURRENT RECORDS FOUND FOR	DISABLED VETERAN				
14	903	CURRENT RECORDS FOUND FOR	FERTILIZER				
15	170,060	CURRENT RECORDS FOUND FOR	FARM TRUCK : <= 1 TON				
16	404,335	CURRENT RECORDS FOUND FOR	FARM TRAILER				
19	26,875	CURRENT RECORDS FOUND FOR	MACHINERY				
20	1,070	CURRENT RECORDS FOUND FOR	MOPED				
21	1,879	CURRENT RECORDS FOUND FOR	MOTOR BUS				
22	200,738	CURRENT RECORDS FOUND FOR	MOTORCYCLE				
23	3,682	CURRENT RECORDS FOUND FOR	OIL WELL PERMIT				
24	1	CURRENT RECORDS FOUND FOR	PARADE				
25	9,984,030	CURRENT RECORDS FOUND FOR	PASSENGER : <= 6000 LBS.				
26	84,359	CURRENT RECORDS FOUND FOR	PASSENGER : > 6000 LBS.				
27	2,548	CURRENT RECORDS FOUND FOR	POW (PRISONER OF WAR)				
28	2,788	CURRENT RECORDS FOUND FOR	PRIVATE BUS : <= 6000 LBS.				
29	755	CURRENT RECORDS FOUND FOR	PEARL HARBOR				
30	17,565	CURRENT RECORDS FOUND FOR	PURPLE HEART				
31	206	CURRENT RECORDS FOUND FOR	SOIL CONSERVATION TRUCK				
32	271	CURRENT RECORDS FOUND FOR	SOIL CONSERVATION TRAILER				
33	135,204	CURRENT RECORDS FOUND FOR	TOKEN TRAILER				
34	134	CURRENT RECORDS FOUND FOR	TRACTOR				
35	4,813,943	CURRENT RECORDS FOUND FOR	TRUCK : <= 1 TON				
36	138,569	CURRENT RECORDS FOUND FOR	TRUCK : > 1 TON				
37	906,894	CURRENT RECORDS FOUND FOR	TRAILER				
38	163,826	CURRENT RECORDS FOUND FOR	TRAVEL TRAILER				
39	383,793	CURRENT RECORDS FOUND FOR	EXEMPT				
40	255	CURRENT RECORDS FOUND FOR	CITY BUS : > 6000 LBS.				
41	7,329	CURRENT RECORDS FOUND FOR	PRIVATE BUS : > 6000 LBS.				
42	153	CURRENT RECORDS FOUND FOR	LOGLOADER				
43	14,481	CURRENT RECORDS FOUND FOR	FARM TRUCK : > 1 TON				
44	596	CURRENT RECORDS FOUND FOR	FORESTRY				
45	36	CURRENT RECORDS FOUND FOR	LEGION OF VALOR				
46	4,721	CURRENT RECORDS FOUND FOR	TOW TRUCK : <= 1 TON				
47	4,723	CURRENT RECORDS FOUND FOR	TOW TRUCK : > 1 TON				
48	1,460	CURRENT RECORDS FOUND FOR	OFCL (OFFICIAL) PASSENGER : <= 6000 LBS.				
49	518	CURRENT RECORDS FOUND FOR	OFCL TRUCK : <= 1 TON				
50	6	CURRENT RECORDS FOUND FOR	OFCL (OFFICIAL) PASSENGER : > 6000 LBS.				
51	7,525	CURRENT RECORDS FOUND FOR	5-YR. APPORTIONED TRAILER				
52	213	CURRENT RECORDS FOUND FOR	ARMED RSRV-PASS : <= 6000 LBS.				
53	2	CURRENT RECORDS FOUND FOR	ARMED RSRV-PASS : > 6000 LBS.				
54	140	CURRENT RECORDS FOUND FOR	ARMED RSRV-TRK : <= 1 TON				
55	64	CURRENT RECORDS FOUND FOR	HON COUNSEL-PASS : <= 6000 LBS.				
56	0	CURRENT RECORDS FOUND FOR	HON COUNSEL-PASS : > 6000 LBS.				
57	8	CURRENT RECORDS FOUND FOR	HON COUNSEL-TRK : <= 1 TON				
58	508	CURRENT RECORDS FOUND FOR	TX GUARD-PASS : <= 6000 LBS.				
59	7	CURRENT RECORDS FOUND FOR	TX GUARD-PASS : > 6000 LBS.				
60	508	CURRENT RECORDS FOUND FOR	TX GUARD-TRUCK : <= 1 TON				
61	447	CURRENT RECORDS FOUND FOR	COTTON TRK : > 1 TON				
62	1	CURRENT RECORDS FOUND FOR	FARM TRUCK TRACTOR				
	17,709,477	GRAND TOTAL OF CURRENT REGISTRATIONS FOR ALL COUNTIES					